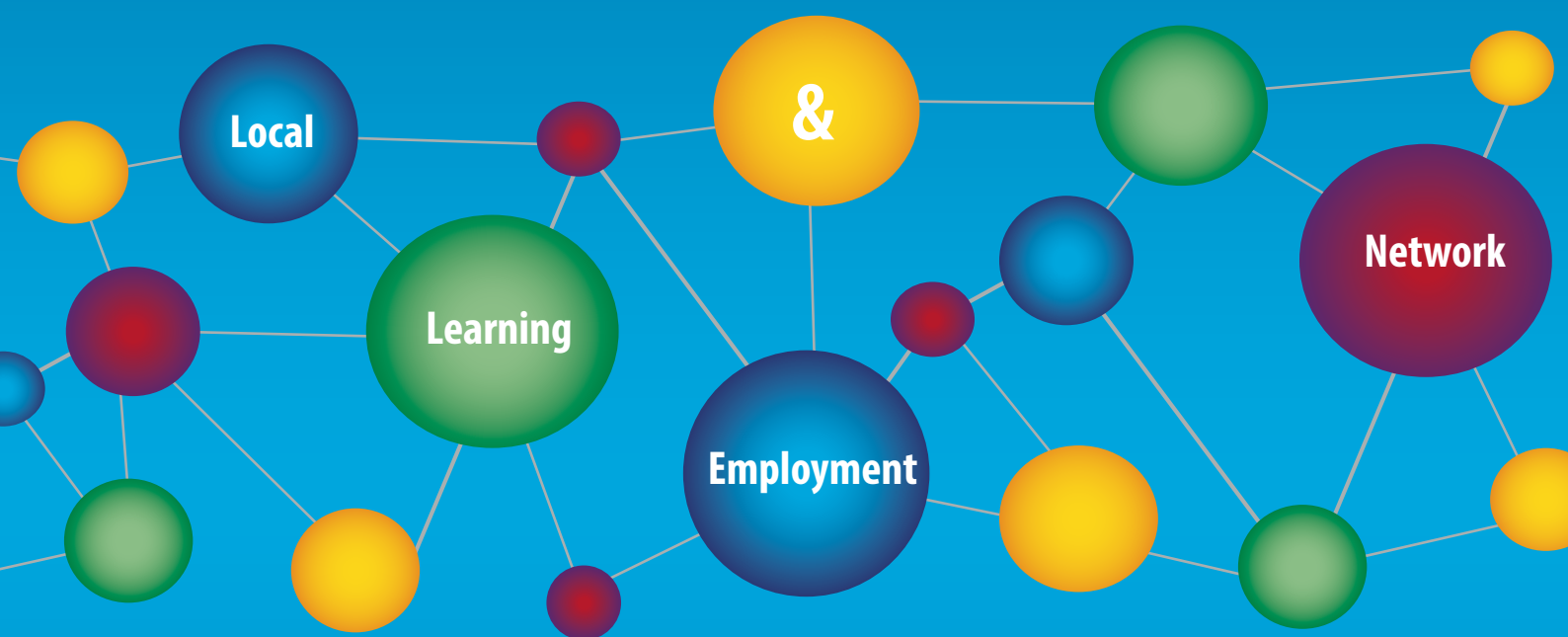


Annual Report 2015



WIMMERA
SOUTHERN
MALLEE
LLEN



Annual Report 2015

WIMMERA
SOUTHERN
MALLEE
LLEN



Contents

2015 – Year at a Glance	1
Chair & Executive Officer's Report	2
Committee of Management	4
Staff	5
Strategic Goals	6
Our Service Region	8
Programs Established	9
Workplace Learning Coordinators Program	10
Support for Schools	11
Partnerships	12
MATES Mentoring Program	16
Reading Buddies Program	20
Regional Achievement Award	21
PACE Program	22
Western Victorian Careers Expo	23
Partnerships brokered by WSMMLLEN	24
Program Partners	26
WSMMLLEN Members	30
Financial Statements	34

Vision

The Wimmera Southern Mallee Local Learning and Employment Network's objective is to assist young people to complete year 12 or its vocational equivalent. This includes traineeships and apprenticeships. A particular focus of our work is with young people from a disadvantaged background.

Mission

To create partnerships between industry, education and the community that develop positive futures for our young people.

Acknowledgements

WSMMLLEN acknowledges and thanks the following organisations and government departments for their funding support:

- Federal Department of Education
- Department of Education and Training
- Department of Prime Minister and Cabinet – Parent and Community Engagement Program
- Edenhope and District Memorial Hospital – Let's Read
- Foundation for Rural and Regional Renewal (FRRR) – Let's Read
- Hindmarsh, Horsham, West Wimmera and Yarriambiack Shire Councils – Let's Read
- Horsham Apex Club 15 – Let's Read
- Horsham Sports and Community Club – Let's Read
- Rupanyup and Minyip Community Bank – Let's Read
- Wimmera Primary Care Partnership
- Wimmera Regional Sports Assembly – Wimmera Sports Mentoring Program
- Wimmera Southern Mallee VET Cluster – VET Coordination

Printing: Wimmera Design and Print

Graphic Design: Lorraine Merton

© Wimmera Southern Mallee LLEN, 2016

www.llen.com.au

2015 – Year at a Glance

114



The number of volunteers who have participated in the Reading Buddies Program since it began in 2012 with 60 regularly reading with children in 9 primary schools across our region during 2015.

356 mates

mentor assist target engage skills

The number of young people who have been matched with a mentor since the inception of the MATES Mentoring Program in 2010 with 73 young people being matched with a mentor in 2015.

498



The number of young people who would not otherwise have the opportunity to participate in sporting activities who have been sponsored by the Wimmera Regional Sports Assembly to participate in the Sports Mentoring Program since 2010.

85

HANDS ON LEARNING

The number of students at risk of disengaging from education who participated in Hands On Learning programs operating in 6 schools across the Wimmera and Southern Mallee in 2015.

2,000+



The number of young people who attended the Western Victorian Careers Expo in June, exploring career options.

101



The number of businesses registered with the School Friendly Business Program (including 91 that registered in 2015) that are supporting local schools throughout the region.

920



The number of books that have filled 17 pop-up library tubs for distribution in the community to provide access to books and to promote the importance of reading with young children.

2,169



The number of Let's Read book bags that have been distributed to families across the Wimmera Southern Mallee by Maternal and Child Health nurses since the programs began in 2014.

13



The number of schools participating in the Grampians Virtual School to offer a wider range of subject choices to VCE students.

18



The number of Vocational Education and Training (VET) courses offered in Horsham for students across the Wimmera and Southern Mallee.

200



The number of students anticipated to take part in the Grampians Virtual School classes in 2016 to access VCE subjects delivered by video conferencing.

300



The number of students from 15 schools across the region who attended Try VET Day in Horsham which resulted in 280 enrolments in VET courses for 2016.

Chair & Executive Officer's Report

One of the great things about our roles at Wimmera Southern Mallee Local Learning and Employment Network (WSMLLEN) is to hear uplifting stories about how our programs have had a positive impact on a young person's life. An example of this was featured in a local newspaper, the *Weekly Advertiser*, in October 2015. The article featured Michael, a former student at Horsham College. (See the full article on page 18)

In 2011, Michael was encouraged by the school chaplain to participate in the MATES mentoring program. 'He said it would be a very good experience for me and a good opportunity, so I took his word and went along with it.' Michael was matched with Gavin, a local businessman who volunteered to be a mentor. Michael and Gavin first bonded over an interest in football, but soon had little trouble filling the hour a fortnight dedicated to the program. 'The first five minutes were a bit awkward, but Gavin was pretty good,' Michael said, 'once we got to know each other, it made it a lot easier.'

Gavin and Michael developed a strong relationship and did a range of different activities. After the first year of the program, they still kept in touch. Michael would occasionally work after school washing cars at Gavin's business. He had a keen interest in the automotive industry. Michael completed a work experience placement at Gavin's business and impressed staff with his strong work ethic. Michael asked Gavin whether he would consider employing him as an apprentice auto technician. Gavin agreed, after consultation with Michael's school, and said that Michael had earned the position on his merits. Michael is now fully employed as an apprentice and is doing a great job. Gavin noted that Michael continues to benefit from mentoring, 'The good thing in our workplace is that Michael has a lot of mentors. We have some really good people out the back who keep an eye on him and have his best interests at heart.'

This is one of many positive stories that we hear. It reinforces the value of striving to achieve our mission of creating partnerships between industry, education and the community that develop positive futures for our young people. Our mission challenges our Committee of Management and our staff to improve education and life outcomes for our young people. The Wimmera Southern Mallee LLEN continues to focus on addressing disadvantage and targeting support for those young people most in need.

Partnerships

When we reflect on the achievements of 2015, we can be proud that the organisation has delivered strong outcomes for our young people. We could not achieve our objectives without the support of our partners. It is through the collaborative work of a wide range of stakeholders that we are able to make a difference in young lives. The WSMLLEN has brokered more than 50 active partnerships aimed at improving the education and life outcomes of our young people. The WSMLLEN is also a member of 16 other partnerships and networks to enhance collaboration and support the achievement of our strategic goals.

Significant Outcomes

The WSMLLEN has continued to broker and support a diverse array of collaborative partnerships. These partnerships enable organisations to work together to deliver a focused response to challenges and gaps identified across our region. Significant outcomes of these partnerships in 2015 include:

- Four Let's Read Programs have provided 1,727 books and resource bags to young families
 - The MATES Mentoring Program has provided an additional 73 young people with mentors
 - The PaCE Literacy Intervention Program supported 26 students to dramatically improve their literacy levels
 - More than 100 businesses have registered as 'School Friendly Businesses'
 - 57 young people participated in junior sports programs through the Wimmera Southern Mallee Sports Mentoring program
 - The WSMLLEN now convenes seven Community Action Networks across the region
 - The WSMLLEN has partnered with the Western Victorian Careers Expo committee to support this great event for the next three years
 - The Reading Buddies Program won two Volunteering Western Victoria categories for the Connecting Communities award, and the Leading Volunteer Team Award for 2015
 - The WSMLLEN was a finalist in the Community Group of the Year category of the Regional Achievement and Community Awards.
- The following annual report provides comprehensive detail of the WSMLLEN's achievements over the past year.

Financial

The WSMMLLEN appreciates the support of the Department of Education and Training (DET) for the funding of the LLEN and Workplace Learning Coordinators program. We have also seen a significant increase in the amount of donations and sponsorships of local partnerships and programs such as Let's Read. Our income is also supplemented by delivering the coordination of the Vocational Education and Training (VET) cluster for schools across the region.

The WSMMLLEN's financial operations are overseen by our Finance Committee. This group meet prior to every Committee of Management meeting to oversee our financial processes and to examine the financial reports. Our thanks go to the members of the Finance Committee for their contribution. The WSMMLLEN had a very successful year, achieving a net operating result of \$91,883 for 2015. The organisation maintains a strong balance sheet with \$394,915 of retained earnings (equity) at the end of 2015.

Committee of Management

The WSMMLLEN Committee of Management continues to provide the organisation with excellent governance, guidance and strategic direction. We are fortunate to have a group of highly skilled and passionate professionals who volunteer their time and expertise to improve the lives of young people throughout the region. These members continue to provide the Executive Officer and staff with significant support. We farewelled Mandy Kirsopp during the year and thank her for her service on the Committee of Management. On behalf of our members, stakeholders and young people we acknowledge and thank our committee for their valuable contribution to the WSMMLLEN.

Staff

We would like to recognise and thank the WSMMLLEN staff for their contribution throughout the year. Our team throughout 2015 included Dimity O'Bryan (Workplace Learning Coordinator), Melissa Powell (Project Officer), Lorraine Merton (Administration Officer), Joy Forbes (Partnership Broker), Carolynne Hamdorf (Project Officer) and Roy Henwood and Kerry Prouse (Finance Officers).

We farewelled Dimity O'Bryan, Roy Henwood and Carolynne Hamdorf during the year. We acknowledge and thank them for their service and contribution during their time at WSMMLLEN and wish them well in their future roles.



Mandi Stewart
Chair

Acknowledgements

Our achievements would not be possible without the support and contribution of many organisations and individuals. We would like to acknowledge and thank our region's schools, stakeholders and partners for their enthusiasm and contributions during 2015. Our work would not be possible without the on-going support of our principals and schools. We look forward to continuing to work closely with them to support the education of our young people.

We acknowledge and thank the Victorian Government and the Department of Education and Training for their continued support. Thank you to Brendan Ryan and DET staff at the Horsham and Ballarat regional offices. Our thanks also, to Bronwen Heathfield, Teresa Durka, Ruth Barnes and the team at the DET Pathways and Participation Division in Melbourne. We also greatly appreciate the support from the Department of Prime Minister and Cabinet to fund the project aimed at improving the literacy of Koorie students and improve the engagement of their families.

Looking Forward

The Victorian Government has committed to fund LLENs from 2016-2019. We are appreciative of the government's support and commitment over the next four years. The funding of the Structured Workplace Learning (SWL) program for 2016 is also greatly appreciated.

We approach the coming years with a resolve to work with our partners to improve the education outcomes and lives of our young people. The future prosperity and well-being of our region is dependent on providing our youth with the tools and confidence to succeed in the 21st century. Our region continues to be innovative and resilient while facing significant environmental, social and economic challenges. We look forward to working with our partners to invest in the growth of our region's social and human capital. Our mission is clear and we are committed to developing positive futures for young people, such as Michael, to enable them to achieve their dreams.



Tim Shaw
Executive Officer

Committee of Management

Category 1: Schools

Dr Joanna Day – Principal, Murtoa College & Nhill College

Peter Gutteridge – Principal, St. Brigid's College

Rob Pyers – Principal, Horsham College

Category 2: TAFE Institutes or Universities with TAFE Sector

Geoffrey Lord – Head of Western Campus, Federation University

Category 3: Adult Community Education Organisations

Trish Adler – Coordinator, SLAAM (Murtoa Neighbourhood House)

Category 4: Other education and training organisations including private registered training organisations, universities and group training companies

Mandy Kirsopp, CEO, Wimmera HUB, (Resigned March 2015)

Category 5: Trade Unions

Vacant

Category 6: Employers, peak employer organisations, regional employer organisations and employment agencies

Peter Drummond – Manager, People and Culture, GWM Water

Category 7: Local Government

Ray Campling – Chief Executive Officer, Yarriambiack Shire

Wendy Robins – Councillor, Hindmarsh Shire

Category 8: Other community agencies and organisations, Commonwealth and State Government departments, School Focussed Youth Service, Adult, Community and Further Education Regional Councils, Regional Youth Councils, Area Consultative Committees, parent organisations etc.

Brendan Ryan – Secretary – Senior Advisor, Regional Performance and Planning, South Western Region DET

Alistair Houston – Manager, Residential Services, Wimmera Uniting Care

Category 9: Koorie organisations, peak Koorie agencies and regional Koorie organisations

John Gorton – Community Services Manager, Goolum Goolum Aboriginal Cooperative

Category 10: Community Members

Carmen Munro – Treasurer - Accountant - Green Taylor Partners, Horsham

Mandi Stewart – Chair - Wimmera Manager, Western District Area, Department of Health and Human Services

Staff



Tim Shaw
Executive Officer



Dimity O'Bryan
Workplace Learning Coordinator



Lorraine Merton
Administration Officer



Melissa Powell
Project Officer,
Workplace Learning Coordinator



Joy Forbes
Partnership Broker



Carolynne Hamdorf
Project Officer



Roy Henwood
Finance Officer



Kerry Prouse
Finance Officer

Strategic Goals

The Wimmera Southern Mallee LLEN's objective is to facilitate stakeholder engagement, build community capacity and infrastructure and drive the Government's education reform and social inclusion agenda to improve education and transition outcomes for all young people.

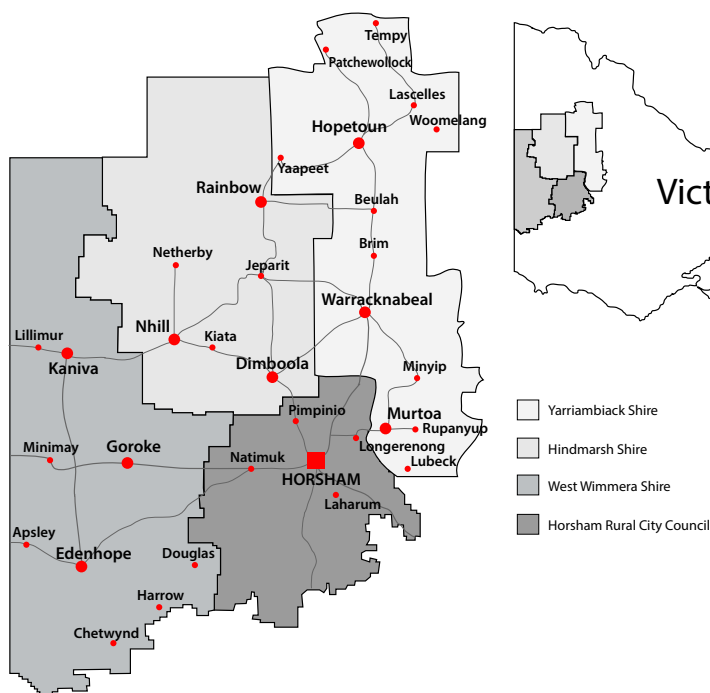
These partnerships focus on improving outcomes for specific groups of young people, including those from disadvantaged groups, humanitarian refugees and Indigenous young people. Our work is based on the principle that learning and development of young people is the collective responsibility of governments, education and training providers, business and industry as well as parents and families and the broader community.

Goal 1: Developing school/industry partnerships that support the expansion of workplace learning opportunities and complement the work of the Workplace Learning Coordinator service	
Strategic Action:	Increase the number of businesses and organisations offering work placement opportunities to our schools
Target:	<ol style="list-style-type: none"> 1. 300 supported work placements/work experience across the region 2. 100 School Friendly Businesses across the Wimmera Southern Mallee region by Dec. 2015 3. 5 industry visits by schools across the region in 2015
Progress against target:	<ol style="list-style-type: none"> 1. 414 workplace learning placements achieved (target achieved and surpassed) 2. 101 businesses have signed up to the School Friendly Business program (annual target achieved and surpassed) 3. Eight school industry visits delivered. (Target achieved and surpassed)
Analysis of achievement to date:	All 2015 targets and outcomes were achieved. The strategies successfully increased the number of businesses and organisations partnering with schools to provide more work placements. WSMLEEN will continue to drive and support the School Friendly Business program, industry visits and work placements across the region.
Goal 2: Broadening the applied learning opportunities available for students	
Strategic Action:	Increase our schools' engagement with business and the community to: <ol style="list-style-type: none"> 1. support an increase in applied learning opportunities 2. raise young people's aspirations
Target:	<ol style="list-style-type: none"> 1. 4 schools delivering Hands On Learning in 2015 2. 12 businesses supporting school- community and VCAL projects in 2015 3. Delivery of one Raising Aspirations event 4. Support the delivery of the PICSE science competition
Progress against actual target:	<ol style="list-style-type: none"> 1. 6 schools are currently delivering the Hands on Learning program (target achieved and surpassed) 2. 12 businesses are supporting school-community and VCAL projects (target achieved) 3. Successful Raising Aspirations event delivered (target achieved) 4. Successful delivery of the PICSE science competition in the second semester (target achieved)
Analysis of achievement to date:	All 2015 targets and outcomes were achieved. The initiatives increased Wimmera Southern Mallee schools' engagement with businesses and organisations and increased the applied learning opportunities for students. The WSMLEEN will continue to support the delivery of the Hands On Learning programs, the Raising Aspirations event and work with local business and industry to facilitate and increase support for our schools.

Strategic Goals

Goal 3: Supporting schools with careers-related strategies, including year 9 and 10 students, that raise awareness and knowledge of career opportunities in growth industries consistent with the Careers Curriculum Framework.	
Strategic Action:	Increase students' awareness and knowledge of career opportunities in growth industries
Target:	<ol style="list-style-type: none"> 1. Four Jobs4Me sessions in 2015 2. 25 career mentors signed up 3. Successful delivery of the 2015 Expo 4. Successful delivery of the Raising Aspirations day
Progress against target	<ol style="list-style-type: none"> 1. Four Jobs 4 Me sessions have been delivered. We worked with Horsham College to include the attendance of non Indigenous students from the Connect Ed re-engagement program (target achieved) 2. 25 careers mentors are signed up for the Koorie careers mentoring program (target achieved) 3. The 2015 Careers Expo was successfully delivered on the 23rd June. More than 2,000 people attended the event (target achieved) 4. Successful Raising Aspirations event delivered (target achieved)
Analysis of achievement to date:	All 2015 targets and outcomes were achieved. The 2015 initiatives successfully supported schools with careers related strategies to raise student's awareness and knowledge of career opportunities in regional growth industries.
Goal 4 Supporting schools to engage, both geographically and by industry, with business and industry stakeholders	
Strategic Action:	Increase the number of businesses and organisations actively engaged in sustainable partnerships with our schools (to enhance the future work-force's skills, knowledge and transition outcomes)
Target:	<ol style="list-style-type: none"> 1. 100 School Friendly Businesses across the Wimmera Southern Mallee region by December 2015 2. 3 School Friendly Business programs operating by December 2015 3. Delivery of 5 school-industry events in 2015 4. Delivery of 2 industry tours
Progress against target	<ol style="list-style-type: none"> 1. 101 businesses have signed up to the School Friendly Businesses program (achieved and surpassed annual target) 2. Three School Friendly Business programs implemented and operating (achieved annual target) 3. Eight school industry visits delivered 4. Delivered school-business lunch-time events: two events at Warracknabeal with 31 businesses attending to meet with the college principal and leading teachers, one event at Nhill with six businesses attending to meet with the college principal and leading teachers and one event at Horsham with 24 businesses attending to meet with the assistant principal and leading teachers. The WSMLLEN facilitated business representatives to speak to 5 schools and to deliver a presentation to 15 principals at the Principals' network meeting (target achieved and surpassed)
Goal 5: Create partnerships to deliver a whole of community approach to raising literacy levels across Hindmarsh, Horsham, West Wimmera and Yarriambiack Local Government Areas (LGAs)	
Strategic Action:	Establish the Let's Read Program in all shires in the Wimmera Southern Mallee Region
Target:	<ol style="list-style-type: none"> 1. Engage and support 300 families across the Wimmera Southern Mallee region 2. One partnership brokered in each of the four Wimmera Southern Mallee LGAs
Progress against target	<ol style="list-style-type: none"> 1. More than 930 families have been engaged and received literacy support and resources for their children. More than 2,000 books have been distributed to families, 200 books awarded to Primary School students and more than 1,500 books available to families through 'pop-up' libraries set up across the region (target achieved and surpassed) 2. A Let's Read partnership has been brokered in each Wimmera Southern Mallee LGA. Steering Committees have been set up for each partnership and a wide range of partners are involved in the initiatives (target achieved)

Our Service Region



Schools in our service region

Yarriambiack Shire Schools 14 Schools

1. Beulah Primary School
2. Hopetoun P-12 College
3. Minyip Primary School
4. Murtoa College
5. Our Lady Help of Christians School (Murtoa)
6. Rupanyup Primary School
7. St Jospeh's Primary School (Hopetoun)
8. St Mary's Primary School (Warracknabeal)
9. Tempy Primary School
10. Warracknabeal Secondary College
11. Warracknabeal Primary School
12. Warracknabeal Special Development School
13. Woomelang Group School (Primary)
14. Yaapeet Primary School

Hindmarsh Shire Schools 8 Schools

1. Dimboola Primary School
2. Dimboola Memorial Secondary College
3. Jeparit Primary School
4. Nhill College
5. Nhill Lutheran School
6. Rainbow P-12 College
7. St Patrick's School (Nhill)
8. St Peter's Lutheran School (Dimboola)

West Wimmera Shire Schools 5 Schools

1. Apsley Primary School
2. Edenhope College
3. Goroke P-12 College
4. Kaniva College
5. St Malachy's Primary School (Edenhope)

Horsham Rural City Schools 9 Schools

1. Holy Trinity Lutheran School (Horsham)
2. Horsham Secondary College
3. Horsham Primary School
4. Horsham Special School
5. Horsham West – Haven Primary School
6. Laharum Primary School
7. Natimuk Primary School
8. St Brigid's College
9. Ss Michael and John's Catholic Primary School (Horsham)

Programs Established

The Wimmera Southern Mallee LLEN service area covers 28,000 square kilometres across the four shires of West Wimmera, Yarriambiack, Hindmarsh and Horsham Rural City Council.

Programs established and/or supported by Wimmera Southern Mallee LLEN in local areas include:

Hindmarsh Shire

Nhill

MATES Mentoring Program
Community Champions
Nhill Community Garden
Nhill Community Action Network
School Friendly Business Program
Let's Read
Reading Buddies Program
Nhill Lutheran School*

Dimboola

MATES Mentoring Program
Community Champions
Let's Read
WSM Sports Mentoring Program
PACE - Quick Smart Program
Dimboola Community Action Network*

Jeparit

Let's Read

Rainbow

MATES Reading Buddies Program
Let's Read
Hands On Learning
Rainbow P-12 College Breakfast Club
Rainbow P-12 College, Shake Rattle and Read

West Wimmera Shire

Kaniva

MATES Mentoring Program
MATES Reading Buddies Program
Community Champions
WSM Sports Mentoring Program
Let's Read

Gorokey

MATES Mentoring Program
Let's Read

Edenhope

MATES Mentoring Program
Let's Read
Edenhope Community Action Network
Sports Mentoring Program
MATES Reading Buddies Program*
School Friendly Business Program*
Hands On Learning*

Apsley

MATES Reading Buddies Program
WSM Sports Mentoring Program

Yarriambiack Shire

Hopetoun

MATES Mentoring Program
Hands On Learning
Live Your Life Project

Murtoa

MATES Mentoring Program
Murtoa Community Action Network
Live Your Life Project
Let's Read
Hands On Learning

Tempy

MATES Reading Buddies Program

Warracknabeal

MATES Mentoring Program
Warracknabeal Secondary College
Warracknabeal Primary School
St Mary's Primary School
MATES Reading Buddies Program
Warracknabeal Primary School
St Mary's Primary School
Community Champions
WSM Sports Mentoring Program
Warracknabeal Primary school
St Mary's Primary School
Warracknabeal Community Action Network
Live Your Life Project
Let's Read
School Friendly Business Program
Hands On Learning*

Woomelang

Reading Buddies Program

Yaapeet

MATES Reading Buddies Program
WSM Sports Mentoring Program

Horsham Rural City

Horsham

MATES Mentoring Program:
Horsham College
Ss Michael and John's Primary School
Horsham Special School
Horsham Satellite VCAL
Horsham Primary School
Rasmussen Campus
298 Campus
Horsham West Primary School
MATES Reading Buddies:
Horsham Primary School
Rasmussen Campus
298 Campus
Ss Michael & St John's Catholic Primary School*
Horsham West Primary School
Community Champions
MATES JET Program
WSM Sports Mentoring Program
Horsham Primary School
Horsham Special Development School
Ss Michael & St John's Catholic Primary School
Koorie Kids After School (KOOKAS) Club
Horsham Community Action Network
Koorie Community Action Network
School Friendly Business Program
Horsham Primary School Swimming Program
Hands On Learning
Let's Read
Jobs4Me
Wimmera PACE Literacy project

* denotes new programs established in 2015

Workplace Learning Coordinators Program

The Workplace Learning Coordinators Program (WLCP) assists secondary schools in the region with their Work Experience (WE), Structured Workplace Learning (SWL) and School Based Apprenticeships and Traineeships (SBATs), through increasing opportunities for young people to undertake work placements with local employers and businesses.

Since the introduction of the Victorian Certificate of Applied Learning (VCAL) in 2002 and an increasing number of students undertaking VCAL studies, there has been an increased demand for students to find work placements in the form of Structured Workplace Learning (SWL) or School Based Apprenticeships and Traineeships (SBATs) to fulfil the requirements of their VCAL certificate. The Workplace Learning Coordinators program was established to support schools to find placements for students and to support businesses in their role of providing work placements.

In 2015, 288 students participated in workplace learning across the region, including 36 SBATs, 124 SWL placements and 131 Work Experience placements.

The WLC program provided each student undertaking a work placement with a log book to assist them to record the details of their placement and to increase their engagement within the workplace. Log Books were provided to schools free of charge. An Employers Guide to Student Work Placements was also made available to employers to assist their compliance with host employer requirements and responsibilities and to provide high quality placements to students.

To further support schools in the ever-increasing need to find student work placements, the WLC Program has established the School Friendly Business Program across the region to foster stronger relationships between schools and businesses and to support the businesses that support local schools.

School Friendly Business events were held in Horsham, Warracknabeal and Edenhope in 2015, bringing together school staff and students with representatives from local businesses. These gatherings provided a forum for employers to give feedback to schools and for schools to acknowledge the valuable contribution that businesses make to the education of young people in our community.

At the end of 2015, approximately 100 local businesses had formally registered with the School Friendly Business Program.

A focus of the Workplace Learning Coordinators program is to identify skills shortages areas in the local region and to assist with facilitating appropriate pathways for local young people to fill the skills shortages..

The Workplace Learning Coordinators Program concluded at the end of 2015, and will be replaced by the Structured Workplace Learning program in 2016.



Support for Schools

VETiS Coordination

The Wimmera Southern Mallee LLEN continued coordination of the Vocational Education and Training in Schools (VETiS) cluster in 2015 across the Wimmera and Southern Mallee. Fourteen schools in this region are actively involved in the cluster allowing a broad range of subjects to be delivered to 300 students by Registered Training Organisations (RTOs) in Horsham at five venues – Federation University, Skillinvest, Longerenong, Wimmera HUB and Horsham College.

Each school's VETiS Coordinator participates in regular cluster meetings, giving valuable input into the planning and support of the VETiS program each year. In addition, many remote schools offer several of their own VETiS courses and with solid relationships between the cluster members, remote students can also access these courses, minimising their travel time.

The WSMLLEN Vet Cluster Coordinator is responsible for setting agendas and taking minutes at the cluster meetings, providing information to stakeholders, liaising with schools, RTOs, and the Victorian Curriculum and Assessment Authority, coordination of Try VET Day and Induction Day, processing of enrolment and withdrawal forms, updating the VETiS Handbook with current information of the 17 courses on offer, coordination of public buses travelling from as far as 120km from Horsham, and timetabling of the connecting buses to RTOs in Horsham.

Framework for Understanding Poverty

WSMLLEN provided 'Framework for Understanding Poverty' professional development for staff at Edenhope College and Dimboola Memorial Secondary College. The framework gives teaching staff an understanding of the impact of poverty on children and its impact on their learning. The training session equips teaching staff with tools to address issues of children in poverty.



Try VET Day 2015

Professional Development for School Staff

In July 2015, WSMLLEN ran a professional development day for teachers and student well-being staff called 'Who's Who in the Zoo'. The day, attended by approximately 50 people, included representatives from ten local organisations that deal with youth, giving a presentation on their organisation, what services they provide for youth, any eligibility criteria for accessing their services and the relevant referral methods.

Grampians Virtual School

The Grampians Virtual School is a network of schools that combine resources to deliver VCE subjects via video conferencing. Smaller rural secondary colleges sometimes do not have the resources to staff VCE subjects for one or two students. By combining resources, one school in the region can deliver a VCE subject to students in multiple schools across the region, creating 'virtual classrooms'. By mutual agreement, schools offer to deliver some subjects where they have available staff, and receive other subjects from other schools.



WSMLLEN commenced the coordination of the Grampians Virtual School at the end of 2015 in readiness for the 2016 school year.

Thirteen schools across the region participate in the Grampians Virtual School.

More than 200 students are anticipated to participate in Grampians Virtual classes in 2016.



Partnerships

Let's Read

The Wimmera Southern Mallee LLEN has established partnerships with local government, schools, kindergartens, playgroups, health providers, community groups and government departments to establish Let's Read in four Wimmera Southern Mallee shires. Let's Read tackles one of the root causes of lack of achievement and disengagement from school – low literacy. Poor literacy is associated with lower education, earnings and health outcomes, and high rates of unemployment, welfare dependence and teenage parenting.

Let's Read is an early years literacy program aimed at promoting the importance of reading with young children from birth to 5 years. Let's Read was developed by the Centre for Community Child Health at the Royal Children's Hospital Melbourne. The Wimmera Southern Mallee LLEN and local stakeholders have partnered with The Murdoch Children's Research Institute and The Smith Family to implement Let's Read in our region.

The program delivers support, books and resources to families at 4 different child age points. Families receive the resources and support for their babies at 4 months, 12 months, 18 months and 3½ years from Maternal and Child Health Nurses during the child's health check. The program distributed more than 1,720 Let's Read books and resources bags to families in 2015.

This is a long term project which will deliver lifelong benefits for our region's children. Reading failure disproportionately affects children from socially disadvantaged homes which, in turn, contributes to a continuation of the poverty cycle. The gift of literacy provides our most vulnerable children with essential skills to achieve and succeed in their education. Low literacy condemns these children to a bleak future, with a strong probability that they will exit school early to a life of welfare.

The future prosperity and well-being of the Wimmera depends on having a skilled literate workforce. This program will make a significant impact on improving literacy rates and academic achievement. Let's Read provides local solutions to address poor education outcomes, disengagement from school and welfare dependency through improving literacy and academic achievement.

Our thanks go to all of our Let's Read partners, especially our wonderful Maternal and Child Health Nurses. We would like to thank and acknowledge our funding partners for 2015, including:

- Hindmarsh, Horsham, West Wimmera and Yarriambiack Shire Councils
- Edenhope and District Memorial Hospital
- Foundation for Rural and Regional Renewal (FRRR)
- Horsham Apex Club 15
- Horsham Sports and Community Club
- Rupanyup and Minyip Community Bank



Let's Read Program Activities – Children's Week 2015



Partnerships

Hands on Learning

The Hands On Learning program continues to grow in the Wimmera. The Wimmera Southern Mallee LLEN has played a key role in bringing the program to our region and providing significant seed funding to schools to implement the program. There are now six schools delivering this effective program which engages 'at risk' students in Years 7-10.

Students work one day a week on 'hands on' projects and four days in the classroom. The program is delivered at Edenhope, Horsham and Murtoa Colleges, Rainbow and Hopetoun P-12 Colleges and Warracknabeal Secondary College. A feature of the Horsham College program is the participation of Horsham Special School students one day per week.

The Hands On Learning students have completed significant projects within their schools and also out in the community. Projects include town and main street beautification projects, construction of a large shed, extension and repair of school sprinkler systems, building of outdoor seats and tables, landscaping and painting of school infrastructure.

Teachers report that the program has a significant impact on improving student engagement and attendance. Students build many things but, most importantly, their social skills, self worth and their confidence. Our thanks go to our schools and Hands On Learning Australia for their ongoing support of this great program.



Hands On Learning



Horsham Special School Hands On Learning team.

The Wimmera Mallee Sports Mentoring program

This successful partnership was first brokered by the WSMMLLEN in 2010. Partners include the region's primary schools, the Wimmera Regional Sports Assembly, Auskick, netball and hockey coordinators, local sporting clubs, and the community.

The program enables children to participate in junior sports programs across the region. It is targeted at children who are not participating in sports due to their family's financial circumstances. More than 57 young people participated in the program in 2015. A total of 499 young people have participated in junior sports programs since its inception.

It is particularly pleasing to see children with a disability, Koorie children and children from migrant families participating in team sports with their peers.

The program increases their physical activity, promotes social inclusiveness, and increases the participants' connections with positive role models and the community. An increase in the engagement of families with their children's activities and their school is one of the many positive outcomes of this program.



Sports Mentoring Participants 2010 - 2015	
In 2 cricket	20
Auskick	246
Basketball	25
Cricket	14
Hockey/ Minkey Hockey	10
Tennis/Hot Shots Tennis	10
Little Athletics	3
Net Set Go	33
Netball	24
Netta Netball	21
Swimming	33
Swimming Pool Passes	45
Dancing	1
Aussie Hoops	14
Total	499

Partnerships

COMMUNITY ACTION NETWORKS

WSMLLEN has been coordinating Community Action Networks (CANS) since 2010 when the Horsham, Koorie and Warracknabeal CANS were established. CANS were established in Nhill and Murtoa in 2011, Edenhope in 2014 and Dimboola in 2015.

Community Action Networks bring together representatives from a range of organisations who work together with schools to address local issues to support young people in their local area.

CANS have continued to support a wide range of existing programs and initiatives as well as establish new programs and initiatives.

In 2015 the CANS continued to support 16 active MATES Mentoring Programs, MATES Reading Buddies Programs, Let's Read Programs across the four Wimmera Southern and Mallee shires, School Friendly Business Programs, Hands On Learning Programs, the Live Your Life Program in the Yarriambiack Shire, as well as the Western Victorian Careers Expo. All of these programs have a single goal – to improve outcomes for young people in the

region, particularly those at risk of disengaging from education.

Poor literacy skills has been identified as a key factor in addressing school retention rates and successful transition into employment or further education. The Reading Buddies program and the Let's Read program aim to improve literacy skills in the early years, while the MATES Mentoring Program, Hands on Learning Program, and Live Your Life program are targeted to support students in late primary and secondary school. The School Friendly Business Program acknowledges the vital role that local businesses provide in supporting schools, particularly in providing work-placements for students in their secondary years. The program aims to support businesses who support their local schools and build stronger links between businesses, schools and the wider community.

There were 304 attendances from 55 agencies at 22 CAN meetings in 2015. The partnerships and connections made via the CAN meetings are a key to linking schools with support services and programs to meet the ever increasing challenge of improving outcomes for young people.



Pictured: Sally Klinge, Anne Gawith, Megan Vercoe, Tim Shaw and Lorraine Merton at a Dimboola CAN meeting 2015

Partnerships

COMMUNITY ACTION NETWORKS

As well as continuing to support the many existing programs and initiatives, CAN meetings facilitate networking opportunities for schools and support agencies that lead to new initiatives that would not happen without the network. Initiatives from the CANs in 2015 included:

Dimboola CAN

- The Knowledge is Power, Alcohol and Other Drugs Awareness Program was delivered by Wimmera Drug Action Taskforce to students at Dimboola Primary and St Peter's Lutheran Schools.
- 30 students from Dimboola Memorial Secondary College (DMSC) attended a motivational workshop in Horsham presented by Bruce Sullivan
- DMSC staff were able to access a free online PD session delivered by Deakin University on 'Sex, Young People and the Law'.
- Support for the Let's Read Program
- Ongoing support for the Dimboola MATES Mentoring Program.

Edenhope CAN

- Establishment of the Hands On Learning Program at Edenhope College
- Establishment of a Reading Buddies Program at Edenhope College
- Connections strengthened between Edenhope College and the local business community via a School Friendly Business dinner.
- Partnership between Edenhope College and Edenhope and District Hospital to deliver the Drumbeat Program
- Ongoing support for the MATES Mentoring Program with 11 new mentors trained and matched with mentees at Edenhope College.

Horsham CAN

- Participation of four Connect Ed students in the Reading Buddies Program at Horsham Primary School
- Facilitation of industry tours for Connect Ed students to GWM Water and Wimmera Regional Library Corp
- Support for the Let's Read Program
- Ongoing support for the MATES Mentoring programs and Reading Buddies programs.

Koorie CAN

- Linking the Careers Expo Coordinator with the Local Aboriginal Education Consultative Group
- Support for KOOKAS Club
- Support for Welcome Baby to Country celebration
- Ongoing support for the MATES Mentoring programs and Reading Buddies programs.

Murtoa CAN

- Murtoa College staff attended SenseAbility Professional Development facilitated by WSMMLLEN to implement resilience programs within the college
- Facilitation of a partnership between Yarriambiack Shire and Murtoa College:
 - to apply for funding for the ongoing delivery of the Hands On Learning program
 - facilitating a Youth Summit attended by 100 young people
 - running a Gaming night, Freeza and short film events
 - participation of Murtoa College students in the Yarriambiack Youth Council
 - linking Murtoa College students with the Yarriambiack Has Talent event
- Rupanyup and Minyip Community Banks' sponsorship of the Let's Read program
- Linking Murtoa College with the Mental Health Recovery worker
- Ongoing support for the Murtoa College MATES Mentoring program.

Nhill CAN

- Facilitating a partnership between WSMMLLEN, Nhill Lutheran School and the Karen community to develop dual language Karen-English children's books for preschool children.
- Linking Volunteering Western Victoria with Nhill College to run Introduction to Volunteering sessions for students
- Linking the School Friendly Business program with the Nhill College jobs showcase day held in September
- Ongoing support for the Nhill College MATES Mentoring program.

Warracknabeal CAN

- Partnership established with Wimmera Primary Care Partnership to apply for funding to train Youth Mental Health First Aid (YMHFA) trainers. The funding application was successful and will also provide for training YMHFA trainers in each of the 4 Wimmera and Southern Mallee Shires
- Linking the Warracknabeal Hands on Learning program with Yarriambiack Shire to develop a sustainable funding arrangement to ensure the continuation of the Hands On Learning program
- Ongoing support for the Warracknabeal MATES Mentoring Programs and Reading Buddies programs.

MATES Mentoring Program

The MATES Mentoring Program continues to provide ongoing adult support for students within our local communities. Over 350 students in the WSMLEN catchment have now been provided with fortnightly guidance, encouragement and assistance through the MATES program. This support often extends to developing constructive beneficial networks for our students at risk, enabling improved connections to their school and local community.

Participants in the program say:

"A worthwhile program that offers mentees another outlet to seek support and guidance."

"A fantastic program. Keep it up."

"I would recommend this program to anyone who is interested in making a difference in a child's life."

The benefits, however, are not only reflected in improved attitudes towards school and self. Mentors also benefit from the ongoing contact with young people living in the same town.

"A great experience for mentee and mentor. Very rewarding."

"Forming a continued relationship with my mentee has been rewarding as well as our ongoing friendship."

Seventy three young people were matched with a mentor in 2015. We continue to promote the program through local business and industries. This year we have several paramedics on board, mentoring students in between their shift work. The LLEN has made presentations to businesses such as the Wimmera Base Hospital, Business Horsham, Watts Price and Associates and the YMCA to encourage them to become 'Community Champions' – a title for businesses which promote involvement in the mentoring program and provide flexible working hours for staff to enable their involvement in MATES.

To celebrate Mentor Week this year, the LLEN invited all schools to a bowling day at the Horsham 10 pin bowling lanes. A great day was had by all mentees, mentors and coordinators travelling from across the region to take part in the celebrations.

"A great experience for mentee and mentor. Very rewarding."



Pictured: MATES mentors and mentees from Edenhope and Kaniva mentoring programs 2015. Photography: Melissa Powell

MATES Mentoring Program

Mentoring Programs in the Wimmera Southern Mallee Region							
Mentoring Program Participants	2010	2011	2012	2013	2014	2015	Total
Dimboola Memorial Sec. College	9	15	11	8	11	7	61
Edenhope College				7		11	18
Goroke P-12			8	5	4		17
Hopetoun P-12 College			1		2	2	5
Horsham College		8	12	7	12	18	57
Horsham PS 298			16	9	2	3	30
Horsham PS Rasmussen			6	7	3	5	21
Horsham Satellite VCAL			4				4
Horsham Special School			6				6
Horsham West PS						5	5
Kaniva College			11	7	7	7	32
Murtoa College		7	9	4	5	3	28
Nhill College		10	11	5	4	5	35
St Mary's Warracknabeal				8		2	10
Warracknabeal Primary School				9		1	10
Warracknabeal Satellite VCAL		9					9
Warracknabeal Secondary College						2	2
Wimmera Uniting Care		1		2			3
Ss Michael & John's Primary School					1	2	3
Total	9	50	95	78	51	73	356

mates
mentor assist target engage skills

356

The number of young people who have been matched with a mentor since the inception of the MATES Mentoring program in 2010



Pictured: MATES mentors and mentees from Edenhope and Kaniva mentoring programs 2015. Photography: Melissa Powell

MATES Mentoring Program



FRIENDS FOR LIFE: Horsham's Morrow Motor Group's Gavin Morrow met Michael Duffin-Wilde through Southern Mallee LLEN's MATES Mentoring Program. Michael has gone on to start an automotive mechanic apprenticeship with Mr Morrow. Picture: MELISSA POWELL

By SARAH SCULLY

When Horsham's Gavin Morrow signed up to a MATES Mentoring Program, he hoped he might help make a difference in a young person's life. He did not, however, expect a young person to have such a profound effect on his life.

The brainchild of Wimmera Southern Mallee Local Learning and Employment Network, the MATES Mentoring Program connects young people in schools with a positive volunteer role model.

The program aims to enhance the skills and life experiences of the student and help them become more engaged with their school and community.

Mr Morrow was paired with former Horsham College student Michael Duffin-Wilde in August, 2011.

Michael said the school chaplain at the time encouraged him to put his hand up for the program.

"He said it would be a very good experience for me and a good opportunity," he said.

"So I took his word and went along with it."

Michael and Mr Morrow first bonded over an interest in football, but soon had little trouble filling the hour a fortnight dedicated to the program.

"The first five minutes were a bit awkward, but Gavin was pretty good," Michael said.

"Once we got to know each other, it made it a lot easier."

Mr Morrow said the pair met once a fortnight at the college.

"After a while we were allowed to catch up outside of school, which opened up the scope. We did things like catch up for lunch at Maccas and go water skiing," he said.

"From there, as our year finished, we still kept in touch a little bit."

Mr Morrow said Michael occasionally called into his work, Morrow Motor Group, after school.

"As an after-school job, he started washing cars for us," he said.

After finishing year 10, Michael left school to start a motor mechanic apprenticeship at Morrow Motor Group.

Mr Morrow said Michael earned his position.

"He didn't get the job based on our relationship – he got it on his merits," he said.

"The supervisors he had during his work experience with us were impressed with his work ethic."

Mr Morrow said Michael chose to leave school after the pair discussed Michael's options with college staff.

"He was doing pretty well at school, so we spoke to the teachers about whether he should go on with his schooling," Mr Morrow said.

"After talking about it they said if I had a position, and if it was something Michael wanted to do, they would be happy for him to do that."

"The good thing in our workplace is that Michael has a lot of mentors. We have some really good people out the back who keep an eye on him and have his best interests at heart."

From The Weekly Advertiser, October 21, 2015 (reproduced with permission)

MATES Mentoring Program



Mentor of the Year Award

The MATES Mentor of the year award was instigated in 2015. Schools were invited to nominate a mentor who had gone 'above and beyond the call of duty' for the award. Some schools found it difficult to nominate a candidate because they felt that every mentor deserved an award and it was a team effort.

Nicole Holm, who has the honour of being our first 'Mentor of the Year', was nominated by the Hopetoun school community for the extraordinary effort she has made in her mentoring role. She has created amazing opportunities for her mentee and encouraged him to experience activities he has never tried before. Nicole has involved her own family in activities and has extended weekend invitations to her student and his family. Below, Nicole is pictured with her mentee Tanner, receiving her award from, MATES Mentoring Program Coordinator, Joy Forbes.

Community Champions

Community Champions are businesses and organisations that support the MATES Mentoring Program by providing flexible work arrangements to release staff during school hours so that they can participate in the program. Mentors are required to catch up with their mentee during school hours, so this generous support of businesses greatly assists in the ever-increasing need to find more mentors to support young people in our community. Some organisations and businesses encourage community involvement of their staff and allow staff to be involved in the mentoring program in paid time, while others allow mentors to catch up the time taken to be involved in mentoring by working extra hours.

In 2015, thirteen Community Champions supported the MATES Mentoring program by providing flexible work arrangements for their staff.



MATES Mentor of the Year presentation: from Left: Tanner, Joy Forbes, Nichole Holm

Reading Buddies Program

Award-winning Program

The MATES Reading Buddies Program received the top award at the Volunteering Western Victoria 2015 awards night. The program was the winner in the 'Connecting Communities' category and the Overall 2015 Leading Volunteer Program.

The MATES Reading Buddies Program was developed by Wimmera Southern Mallee LLEN and commenced at Horsham Primary School, Rasmussen Campus in 2012. By the end of 2015, the Program had been established in 11 schools with over 70 volunteers reading with children on a regular basis in local schools.

In 2015, four students from Horsham College's Connect Ed re-engagement program undertook specially modified training sessions to become reading buddies to support younger children in a local primary school and kindergarten. This initiative not only provided extra reading buddies, but was extremely valuable for the students who undertook the training.

The Reading Buddies volunteers listen to children read on a regular basis. Their role is to encourage, praise, and provide students with an extra opportunity to read with an adult. If children struggle to master basic reading skills, they are at a much greater risk of disengaging when they reach secondary college. The Reading Buddies Program was developed to address this issue.



Volunteering Western Victoria Awards Night 2015



Reading Buddies, Horsham West Primary School



Reading Buddies, Horsham West Primary School



Reading Buddies, Horsham West Primary School



Reading Buddies Program
Volunteering Western Victoria Awards
Overall Leading Volunteer Program

Regional Achievement Award

2015 Finalist

Wimmera Southern Mallee LLEN was one of three Finalists in the 2015 Victorian Regional Achievement and Community Awards, in the category of Prime Super Community Group of the Year.

The Community Group of the Year Award recognises groups and organisations that make a significant contribution to their community.

This award acknowledges community groups that share a strong sense of community spirit, which plays a vital role in enhancing the social, economic, commercial and environmental prosperity of their region and recognises their efforts help to promote a true community spirit and make regional communities stronger and more vibrant.

Pictured below at the presentation night: Mandi Stewart, (WSMLLEN Chair) Tim Shaw (WSMLLEN EO), Melissa Powell (WSMLLEN Staff) Stephen Pratt, (General Manager - Operations, Prime Super) Wendy Robins, Trish Adler and Geoffrey Lord (WSMLLEN Committee of Management)



PACE Program

Literacy Intervention Project

A literacy intervention project was trialled in 2014 - 2015 at Horsham Primary School Rasmussen Campus, targeting early years Koorie students.

The school saw positive results from the program both in the growth in student literacy skills and confidence. Knowing the PACE funding would discontinue mid 2015, the school put in place measures to train existing support staff to run the program on an ongoing basis.

The program engaged 26 students. Six children officially discontinued the program due to improving their literacy levels to a standard comparable to the class average. Seven children were involved for the whole period. The remainder were either new prep intakes or new students to the school who required support.

There were two grade one students who were involved in the program in 2014 who reached reading comprehension levels at the high end for their class. Both of these children were timid, low level readers who progressed well when provided with support and the regime of regular, incremental daily reading and encouragement.

The best gains were made by students in prep and grade one who regularly attended school. The earliest intervention appeared to make the most enduring change.

As an instructor, the greatest joy is seeing a child's face light up when they realise they can work out text on the page by themselves. I love the surprise they show when they fluently read a passage that they thought they couldn't read. One child in grade one, who had been with the program since the program began, made the following progress. She originally only knew a handful of her letters, had a defined speech impediment, had little confidence in reading independently, would hold back and let others respond for her and had great difficulty hearing and sounding out even simple 3 letter words like hop, tin, bat, fan. Near the conclusion of the program, she willingly volunteered to read by herself a list of 10 words with the same ending sound 'op'. She read them fluently without halting and she was beaming afterwards. This was a huge step forward in the way this child saw herself as a reader and the control she had of her learning. It is this gift that we are hoping to give through this program—the chance for young children with limited literacy and generally

limited reading support in the home environment, to gain skills, independence and confidence to support themselves in their forward journey of learning.

It has been a great privilege to be involved in supporting this group of students and I am so pleased the school will continue to provide the direct instruction that some students obviously need.

Irrespective of the child's learning or social challenges, it is very clear that children know when they have made gains and it spurs them on and motivates them to do better.

One of the teaching support staff who regularly listens to children read across all grades at the school made the comment, 'it's amazing to see the gains that (child in year 4) has made since being involved in the program'.

Some of the children involved may never achieve a peer equivalent level of literacy, but if they can be the best they can be and develop a love of reading and learning then that is a marvellous thing.

Improved literacy changes lives, it improves physical health, the potential to earn and social stability.

The daily letters and notes that are sent home with students' take-home readers has been an enduring part of the program. It's hard to tell if parents are taking a more active role in listening and supporting their children's literacy because of this, but I do know the children value the books they take home. One child took copies of his books to read when he travelled to Sydney during the school holidays. Another boy asked to borrow some coloured pencil because he didn't have any at home -so he could colour in one of the books he particularly enjoyed reading. These acts demonstrate the shift in attitude towards reading books and making meaning from texts. The attitudinal shift is as important as the improvement in skills.

Thanks for the opportunity to be involved in the PACE program. It has been a really rewarding experience for me too.

Carolynne Hamdorf

July 2015

This program was funded by the Australian Government through the Department of Prime Minister and Cabinet

Western Victorian Careers Expo



Wimmera Southern Mallee LLEN has been a proud sponsor of the Western Victorian Careers Expo (formerly Wimmera and Southern Mallee

Careers Expo) for many years. WSMMLLEN supports the Expo by providing office space for the Careers Expo coordinator as well as sponsorship and graphic design services.

The Western Victorian Careers Expo, hosted by the Wimmera and Southern Mallee Careers Association, is country Victoria's largest careers expo with 70 exhibitors plus 14 tertiary institutions

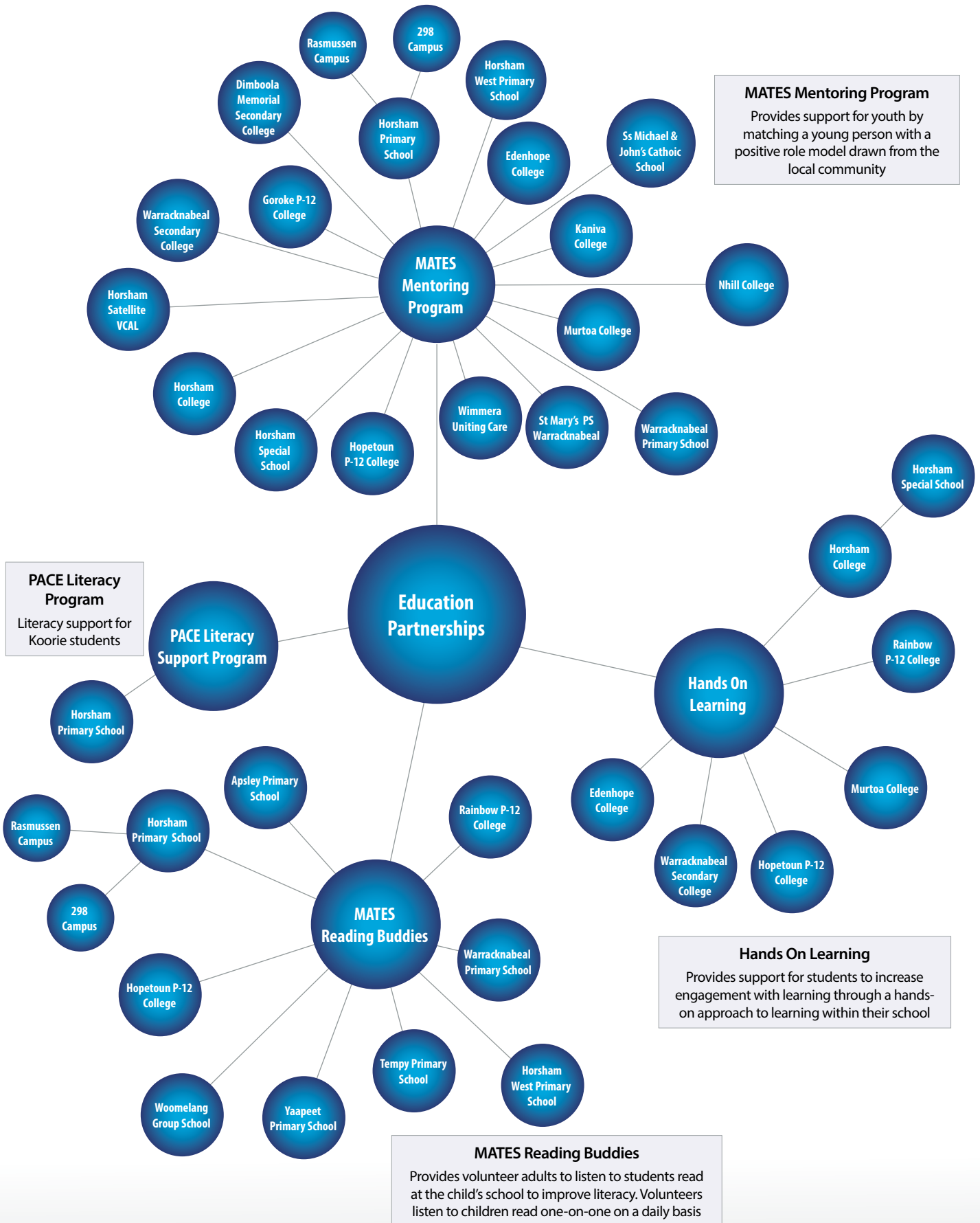
represented. Since its inception in 1986, this premier regional event has provided a one-stop-shop of vocational information to Western Victorian students, school leavers, job seekers, career changers, those returning to work and people considering further study or training. The Expo continues to grow with 22 schools participating from the Wimmera and Southern Mallee region and beyond and over 2,000 people attending in 2015.

A key feature of the expo is the extensive range of displays and the many hands-on demonstrations.

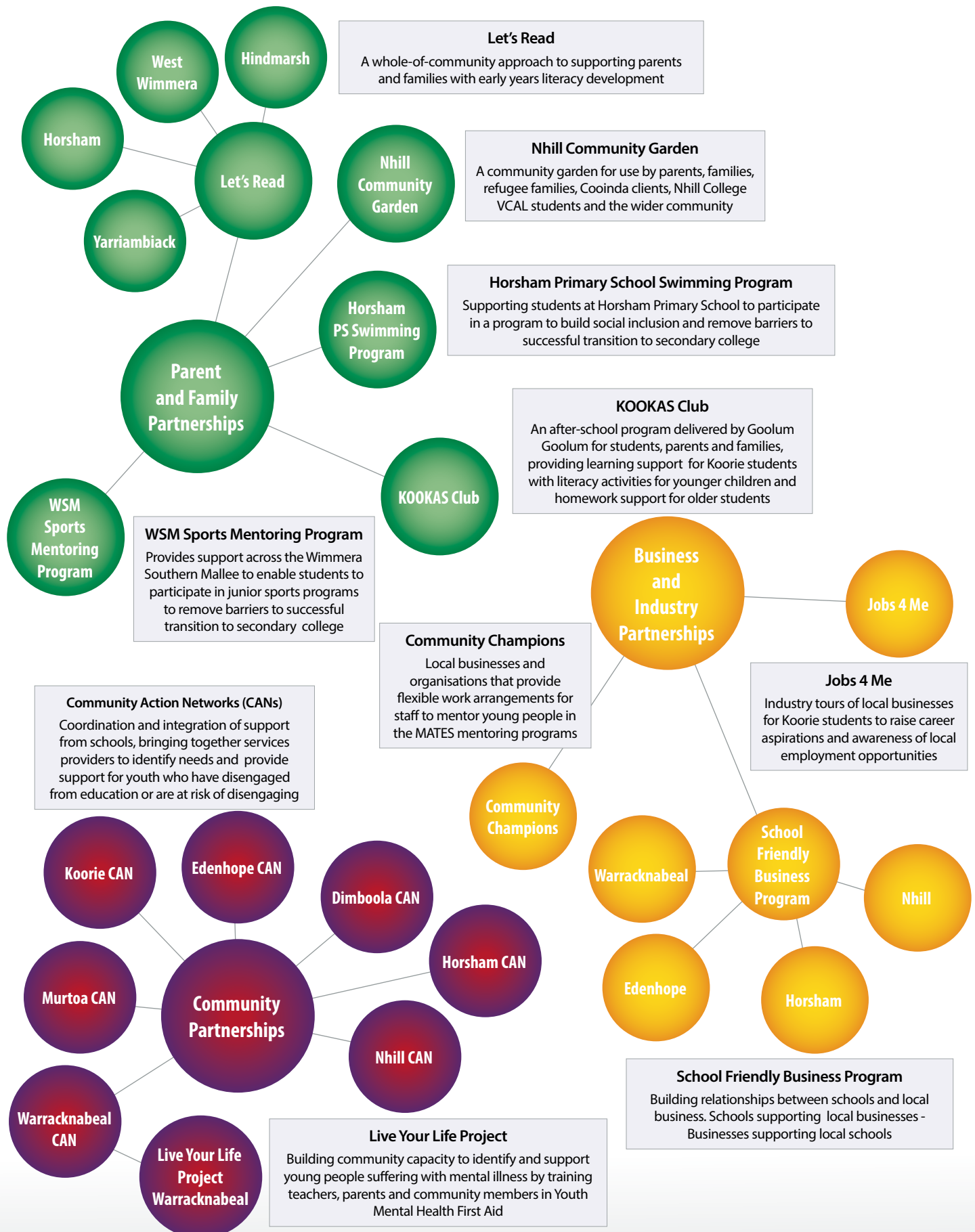


Western Victorian Careers Expo 2015 photographs by Thea Jane Photography

Partnerships brokered by WSMMLLEN



Partnerships brokered by WSMMLLEN



Program partners

Business and Industry partnerships

Community Champions

ABC Radio
Advantage Pharmacy
Café Jas
CRT, Warracknabeal
Dimboola Pharmacy
Edenhope and District Community Bank
GWM Water
Hindmarsh Shire
Kaniva Bus Service
Landmark
Luv a Duck
Morrow Motor Group
NAB
Regional Schools Outreach Program
Rural Northwest Health
Saxton Rural
TFW Engineering
Tyler's Hardware
Watts Price Accountants
West Wimmera Shire
Wimmera Foot Clinic
Wimmera Health Care Group
Wimmera HUB
Wimmera Information Network
Wimmera PCP
Wimmera Southern Mallee LLEN
Wimmera Uniting Care

Jobs For Me

Horsham College
Horsham Primary School 298 Campus
Horsham Primary School Rasmussen Campus
Horsham Special School
Local Businesses
St Brigid's College

School Friendly Business Program Dimboola

Clever Stitch
School Friendly Business Program Edenhope
Edenhope & District Memorial Hospital
School Friendly Business Program Horsham
Across Events Management
Axis Employment
Bendigo Bank Horsham
Bloomin Buds
Business Horsham
Cafe Jas
Cheap as Chips
D'Coco Hair Studio
Exchange Hotel
Fig Tree Cafe
GWM Water
Gypsy Willow
Horsham Agricultural Society
Horsham College
Horsham Concrete Co Pty Ltd
Horsham Library
Horsham Lighting and Decor
Horsham Mitre 10
Horsham Primary School 298 Campus
Horsham Primary School Rasmussen Campus
Horsham West Primary School
Intersport
Jetset Travel Horsham
Mahogany House Trading Co
McDonalds Horsham
Melissa Powell Photography
Petstock Horsham
Red Rock Books & Gallery
Rockin Robin's Food Bar
Sportfirst Horsham
Ss Michael & St John's Primary School
St Brigid's College
Surf One
Think Web Design
Toyworld Horsham/Just Juniors
Wimmera Development Association
Wimmera Foot & Ankle Clinic
Wimmera HUB
Wimmera Office Equipment
Wimmera Primary Care Partnership
Wimmera Uniting Care

School Friendly Business Program Murtoa

Rupanyup and Minyip Community Bank
Murtoa Neighbourhood House SLAAM
Schier Cabinet Makers

School Friendly Business Program Nhill

Aherns Sherwell
Cambrelle's
Dave's Auto Electrics
Desert Edge Arts
Dunlop Super Dealer Nhill
Earthly Treasures
Halfway Motors
Hindmarsh Shire
Jennifer Meek Giftware
Jim's Butchery
Meeky's Tyre Clinic
Nhill Free Press & Kaniva Times
Nhill Paint N Panel
Nhill Pure Indulgence
Robins Ag Service
West Wimmera Health Service
Westprint Heritage Maps
School Friendly Business Program Rainbow
Rainbow Learning Group and Neighborhood House
School Friendly Business Program Warracknabeal
ANZ Warracknabeal
Belle-Vue Trading Pty Ltd
Brian Clarke Vet Clinic
Cafe Pharmacino
Creskide Hotel
Dianne Marchment and Associates
Fagan Auto
Feet First Footwear
Jonasson's Kitchen Solutions
North West Real Estate
O'Connors Case IH, Warracknabeal
Presh Beauty
Rural Northwest Health
SP & AJ Cox Automotive
St Mary's Primary School Warracknabeal
Warrack Home Timber and Hardware
Warrack Hot Bread
Warracknabeal Community Action Network
Warracknabeal Herald and Northwest Press
Warracknabeal Neighbourhood House and Learning Centre
Warracknabeal Pharmacy
Warracknabeal Preschool
Warracknabeal Primary School
Warracknabeal Secondary College
Werrigar Roadhouse
Wilken Grain
Woodbine Inc
Yarriambiack Shire Council

Program partners

Community partnerships

Dimboola CAN

Department of Health and Human Services
Department of Education and Training
Dimboola Banner
Dimboola Memorial Secondary college
Dimboola Primary School
Dimboola Courier
Hindmarsh Shire
St Peter's Lutheran School
Victoria Police
Wimmera Regional Library Corporation
Wimmera Uniting Care
Wimmera Health Care Group

Edenhope CAN

Department of Health and Human Services
Edenhope & District Memorial Hospital
Edenhope College
Victoria Police
West Wimmera Shire
Wimmera Regional Library Corporation
Wimmera Uniting Care

Horsham CAN

Barengi Gadjin Land Council
Community Axis
Community Members
Connect Ed
Department of Education and Training
Department of Health and Human Services
Federation University
Horsham College
Horsham Community House
Horsham Rural City Council
Nexus Youth Centre
Red Cross
Ss Michael & St John's Primary School
Victoria Police
Volunteering Western Victoria
Wimmera HUB
Wimmera Primary Care Partnership
Wimmera Uniting Care

Koorie CAN

Barengi Gadjin Land Council
Community Members
Connect Ed
Delkaia Best Start Program
Department of Health and Human Services
Department of Education and Training
Federation University
Goolum Goolum Aboriginal Cooperative
Horsham College
Horsham Primary School 298 Campus
Horsham Primary School Rasmussen Campus
Horsham Rural City Council
Horsham West Primary School
Local Aboriginal Education Consultative Group
PACE Program
Victorian Aboriginal Education Association Incorporated
Victoria Police
Volunteering Western Victoria
Wimmera HUB
Wimmera Uniting Care

Murtoa CAN

Rupanyup and Minyip Community Bank
Community Members
Department of Health and Human Services
Department of Education and Training
Dunmunkle Health
Federation University
Local Businesses
Murtoa College
Murtoa Neighbourhood House
Victoria Police
Volunteering Western Victoria
Wimmera HUB
Wimmera Uniting Care
Yarriambiack Shire Council

Nhill CAN

Barengi Gadjin Land Council
Community Axis
Community Members
Department of Health and Human Services
Department of Education and Training
Federation University
Hindmarsh Shire
Nhill College
Nhill Neighbourhood House
Nhill Lutheran School
Rights, Information and Advocacy Centre
Victoria Police
Volunteering Western Victoria
Wimmera HUB
Wimmera Uniting Care

Warracknabeal CAN

Department of Health and Human Services
Department of Education and Training
Federation University
Grampians Community Health
Local Businesses
Neighbourhood House
Rural Northwest Health
Volunteering Western Victoria
Warracknabeal Satellite VCAL
Warracknabeal Secondary College
Wimmera HUB
Wimmera Uniting Care
Yarriambiack Shire Council

Live Your Life Project

Warracknabeal Live Your Life Project
Ballarat Health Services
Community Members
Department of Education and Training
Grampians Community Health
Hopetoun College
Murtoa College
Rural Northwest Health
Warracknabeal Herald
Warracknabeal Secondary College
Wimmera Uniting Care
Yarriambiack Shire Council



Program partners

Education partnerships

Hands On Learning Edenhope

Hands On Learning Australia

Edenhope College

Hands On Learning Hopetoun College

Hands On Learning Australia

Hopetoun P-12 College

Hands On Learning Horsham College

Hands On Learning Australia

Horsham College

Hands On Learning Murtoa College

Hands On Learning Australia

Murtoa College

Hands On Learning Rainbow

Hands On Learning Australia

Rainbow P-12 College

Hands On Learning Warracknabeal

Hands On Learning Australia

Warracknabeal Secondary College

MATES Mentoring Program Dimboola

Community Members

Dimboola Memorial Secondary College

Hindmarsh Shire

Local Businesses

MATES Mentoring Program Edenhope College

Community Members

Edenhope College

Local Businesses

MATES Mentoring Program Goroke

Community Members

Goroke P-12 College

MATES Mentoring Program Hopetoun

Community Members

Hopetoun P-12 College

MATES Mentoring Program Horsham Satellite VCAL

Community Members

Horsham College

Horsham Community Action Network

Local Businesses

MATES Mentoring Program Horsham College

Community Members

Horsham Community Action Network

Horsham College

Local Businesses

MATES Mentoring Program Horsham Special School

Community Members

Horsham Community Action Network

Horsham College

Horsham Special School

Local Businesses

MATES Mentoring Program HPS 298 Campus

Community Members

Horsham Community Action Network

Horsham Primary School 298 Campus

Local Businesses

MATES Mentoring Program HPS Rasmussen Campus

Community Members

Horsham Community Action Network

Horsham Primary School Rasmussen Campus

Local Businesses

MATES Mentoring Program Kaniva College

Community Members

Kaniva College

MATES Mentoring Program Murtoa College

Community Members

Local Businesses

Murtoa College

Murtoa Community Action Network

Murtoa Neighbourhood House

MATES Mentoring Program Nhill College

Community Members

Hindmarsh Shire

Local Businesses

Nhill College

Nhill Community Action Network

MATES Mentoring St Mary's Warracknabeal

Community Members

Local Businesses

St Mary's Primary School Warracknabeal

Warracknabeal Community Action Network

MATES Mentoring Warracknabeal Primary School

Community Members

Local Businesses

Warracknabeal Community Action Network

Warracknabeal Primary School

MATES Mentoring Warracknabeal Satellite VCAL

Community Members

Warracknabeal Community Action Network

Warracknabeal College

Warracknabeal Neighbourhood House

Warracknabeal Satellite VCAL

MATES Mentoring Program Wimmera Uniting Care

Community Members

Wimmera Uniting Care

MATES Reading Buddies Edenhope College

Community Members

Edenhope Community Action Network

Edenhope College

MATES Reading Buddies Hopetoun P-12 College

Community Members

Hopetoun P-12 College

MATES Reading Buddies Horsham West PS

Community Members

Horsham Community Action Network

Horsham West Primary School

MATES Reading Buddies HPS 298 Campus

Community Members

Horsham Community Action Network

Horsham Primary School 298 Campus

MATES Reading Buddies HPS Rasmussen Campus

Community Members

Horsham Community Action Network

Horsham Primary School Rasmussen Campus

MATES Reading Buddies Kaniva College

Community Members

Kaniva College

MATES Reading Buddies Nhill Lutheran School

Community Members

Nhill Lutheran School

MATES Reading Buddies Apsley Primary School

Apsley Primary School

Community Members

MATES Reading Buddies Rainbow Primary School

Community Members

Rainbow Primary School

MATES Reading Buddies Ss Michael & John's

Community Members

Ss Michael & John's Primary School

MATES Reading Buddies St Mary's Warracknabeal

Community Members

St Mary's Primary School

MATES Reading Buddies Tempy Primary School

Community Members

Tempy Primary School

MATES Reading Buddies Warracknabeal Primary School

Community Members

Warracknabeal Community Action Network

Warracknabeal Primary School

MATES Reading Buddies Woomelang Group School

Community Members

Woomelang Group School

MATES Reading Buddies Yaapect Primary School

Community Members

Yaapect Primary School

Program partners

Parent and family partnerships

Horsham PS Swimming Program

Department of Education and Training
Horsham Primary School 298 Campus
Horsham Primary School Rasmussen Campus
Horsham Rural City Council
Parents and families
Wimmera Regional Sports Assembly
YMCA

KOOKAS Club

Delkaia Best Start Program
Federation University
Goolum Goolum Aboriginal Cooperative
Horsham College
Horsham Primary School 298 Campus
Horsham Primary School Rasmussen Campus
Horsham West Primary School
Local Aboriginal Education Consultative Group
Parents and families
Wimmera Regional Library Corporation

Let's Read Hindmarsh

Department of Education and Training
Dimboola CAN
Dimboola Memorial Secondary College
Dimboola Primary School
Foundation for Rural & Regional Renewal
Hindmarsh Shire
Horsham Sports and Community Club
Murdoch Children's Research Institute
Nhill CAN
Nhill College
Nhill Lutheran School
Nhill Neighbourhood House
Royal Children's Hospital
St Patrick's Primary School Nhill
The Smith Family
West Wimmera Health Service
Wimmera Regional Library Corporation

Let's Read Horsham

Delkaia Best Start Program
Department of Health and Human Services
Department of Education and Training
Goolum Goolum Aboriginal Cooperative
Horsham Apex Club 15
Horsham CAN
Horsham North Kindergarten
Horsham Primary School 298 Campus
Horsham Primary School Rasmussen Campus
Horsham Rural City Council
Horsham Special School
Horsham Sports and Community Club
Horsham West Primary School
Murdoch Children's Research Institute
Noah's Ark Inc
Scope Victoria
Skillinvest
Ss Michael & St John's Primary School
The Smith Family
Wimmera Development Association
Wimmera Healthcare Group
Wimmera Regional Library Corporation
Wimmera Uniting Care

Let's Read West Wimmera

Edenhope College
Foundation for Rural & Regional Renewal
Goroke P-12 College
Horsham Sports and Community Club
Kaniva College
Kaniva Library
Murdoch Children's Research Institute
The Smith Family
West Wimmera Shire
Wimmera Regional Library Corporation

Let's Read Yarriambiack

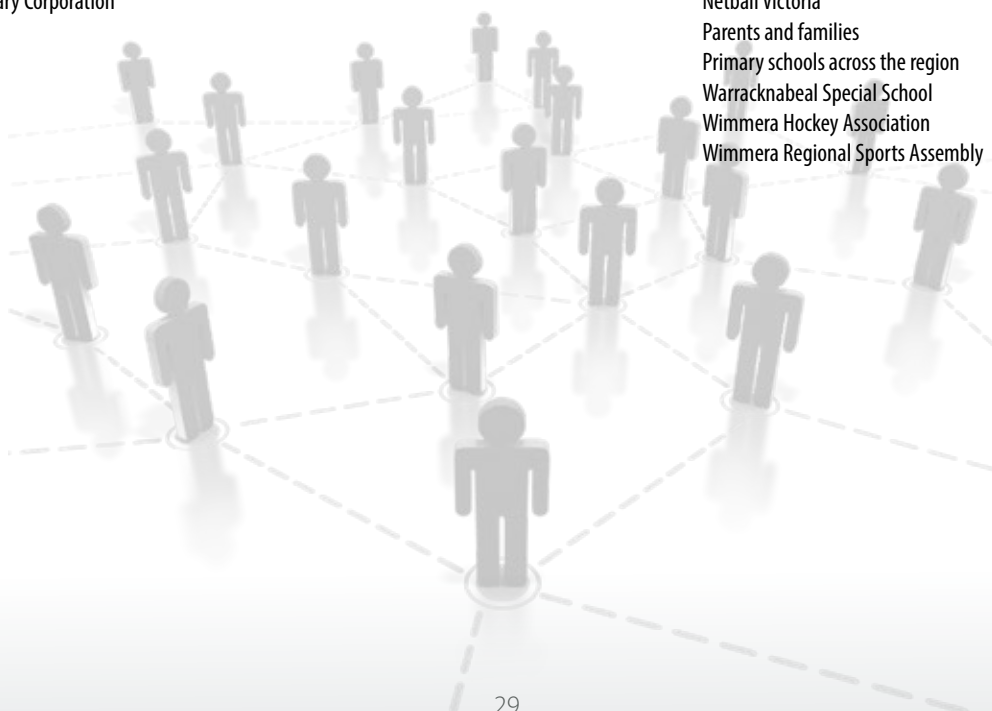
Department of Education and Training
Dunmunkle Health
Hopetoun College
Horsham Sports and Community Club
Murdoch Children's Research Institute
Murtoa Community Action Network
Murtoa College
Murtoa Neighbourhood House
Parents and families
Royal Children's Hospital
Rupanyup and Minyip Community Bank
Rural Northwest Health
St Mary's Primary School Warracknabeal
The Smith Family
Warracknabeal Community Action Network
Warracknabeal Neighbourhood House
Warracknabeal Primary School
Warracknabeal Secondary College
Wimmera Regional Library Corporation
Yarriambiack Shire Council

Nhill Community Garden

Cooinda Disability Services
Karen Community Group
Local Businesses
Nhill College
Nhill Community Action Network
Nhill Lutheran School
Nhill Neighbourhood House
Parents and families
West Wimmera Health Service
Wimmera Uniting Care

WSM Sports Mentoring Program

Auskick Community Coordinators
Auskick Regional Coordinator
Local sports clubs across the region
Netball Victoria
Parents and families
Primary schools across the region
Warracknabeal Special School
Wimmera Hockey Association
Wimmera Regional Sports Assembly



WSMLLEN Members

1. Schools (18 Members)

Balmoral High School	Horsham College	Rainbow P-12 College
Beulah Primary School	Horsham Primary School	Rupanyup Primary School
Dimboola Memorial Secondary College	Horsham Special School	St. Brigid's Secondary College
Edenhope College	Kaniva College	Warracknabeal Secondary College
Goroke P-12 College	Murtoa College	Warracknabeal Special School
Hopetoun P-12 College	Nhill College	Yaapeet Primary School

2. TAFE Institutes or Universities with TAFE Sector (2 Members)

Longerenong College	Federation University
---------------------	-----------------------

3. Adult Community Education Organisations (7 Members)

Gateway BEET	Rainbow Community Learning Group	Warracknabeal Neighbourhood House and Learning Centre
Learning Information Network Kaniva	Murtoa and District Neighbourhood House	Wimmera HUB
Nhill Neighbourhood House Learning Centre Inc	SLAAM Inc	

4. Other Education and training organisations including private registered training organisations, universities and group training companies (2 Members)

Community Axis	Skillinvet
----------------	------------

5. Trade Unions (1 Member)

Victoria Trades Hall Council

6. Employers, Peak employer organisations, regional employer organisations and employment agencies. (24 Members)

Allan and Trev's Workwear	Horsham Autoelectrical Services Pty Ltd	Simpson Personnel
Australian Industry Group	Horsham Real Estate	Stanford Enterprises
Beaurepaires Horsham	Horsham Regional Art Gallery	Toy's Garden Restaurant
Dimboola Pharmacy	Luv-a-Duck	Warracknabeal AMCAL Pharmacy
Edenhope Post Office	J & F May	Warracknabeal Herald - North West Press
Feet First Footwear	McLennan Smash Repairs	Western Electrical & Refrigeration P/L
GWM Water	Morrow Motors	Wimmera Mail Times
Hopetoun Courier	O'Connors Case IH	Woodbine Inc

7. Local Government (4 Members)

Hindmarsh Shire Council	Yarriambiack Shire Council
Horsham Rural City Council	
West Wimmera Shire Council	

WSMLLEN Members

8. Other community agencies and organisations, Commonwealth and State Government departments, School Focussed Youth Service, Adult, community and Further Education regional councils, Regional Youth Councils, Area Consultative Committees, parent organisations. (17 Members)

Art Is Festival	Horsham Police	Warracknabeal Memorial Kindergarten Inc
Department Education and Training	Leadership Wimmera	Wimmera Business Centre
Department of Health and Human Services	NEXUS Youth Centre	Wimmera Development Association
Department of Planning & Community Development	Regional Development Victoria	Wimmera Primary Care Partnership
Grampians Community Health Centre	St Laurence Employment	Wimmera Regional Sports Assembly
	Volunteering Western Victoria	Wimmera Uniting Care

9. Koorie Organisations (3 Members)

Barengi Gadjin Land Council	Goolum Goolum Aboriginal Cooperative	Local Aboriginal Education Consultative Group LAECG
-----------------------------	--------------------------------------	---

10. Community Members (41 Members)

John Ackland	Gail Harradine	Campbell Pallot
Leigh Andressen	Gary Jones	Gary Pilgrim
Kim Boulton	Serena Kereopa	Sue Radford
Steve Braybrook	Neil King	Dianne Richards
Bev Buckley	Mandy Kirsopp	Joe Richardson
Margaret Burdett	Ross McFarlane	Murray Robinson
Russell Christie	William McGrath	Graeme Sargent
Hugh Delahunty	Bruce McInnes	Iain Sedgman
Louise Dower-Amor	John Millington	Kylie Smith
Kim Drummond	Raelene Mitchell	Mandi Stewart
Rob Gersch	Alan Montague	Margaret Stewart
John Glover	Gloria Muldoon	Lyn Sudholz
Susan Griffiths	Carmen Munro	Mark Zimmerman
Barbara Hahs	Robyn Murphy	

Independent Audit Report

To the members of Wimmera Southern Mallee Local Learning and Employment Network

We have audited the accompanying financial report of Wimmera Southern Mallee Local Learning and Employment Network, which comprises the statement of financial position as at 31 December 2015, and the Statement of Profit and Loss for the year then ended, statement of changes in equity and statement of cash flows for the year then ended, notes comprising a summary of significant accounting policies and other explanatory information and the Statement by Members of the Committee Declaration.

Committee of Management responsibility for the Financial Report

The Committee of Management of Wimmera Southern Mallee Local Learning and Employment Network are responsible for the preparation and fair presentation of the financial report in accordance with Australian Accounting Standards and Associations Incorporation Reform Act (Vic) 2012 and for such internal control as Committee of Management determine is necessary to enable the preparation and fair presentation of a financial report that are free from material misstatement, whether due to fraud or error.

Auditor's responsibility

Our responsibility is to express an opinion on the financial report based on our audit. We conducted our audit in accordance with Australian Auditing Standards. Those standards require that we comply with relevant ethical requirements relating to audit engagements and plan and perform the audit to obtain reasonable assurance about whether the financial report is free from material misstatement.

An audit involves performing procedures to obtain audit evidence about the amounts and disclosures in the financial report. The procedures selected depend on the auditor's judgement, including the assessment of the risks of material misstatement of the financial report whether due to fraud or error. In making those assessment, the auditor considers internal control relevant to the Associations preparation and fair presentation of the financial statements in order to design audit procedures that are appropriate in the circumstances, but not for the purpose of expressing an opinion on the effectiveness of the entity's internal control. An audit also includes evaluating the appropriateness of the accounting policies used and the reasonableness of accounting estimates made by Committee of Management, as well as evaluating the overall presentation of the financial report.

We believe that the audit evidence we have obtained is sufficient and appropriate to provide a basis for our audit opinion.

Independence

In conducting our audit, we have complied with the independence requirements of the Australian professional accounting bodies.



Horsham Office 44 Wilson Street Horsham Victoria 3400

ABN 40 876 591 185

Postal Address PO Box 118 Horsham Victoria 3402

Affiliations: Knights Accounting, 16 Cromie Street Rupanyup Victoria 3388

P 03 5382 3001 **F** 03 5381 1357 **E** mail@wattsprice.com.au **W** www.wattsprice.com.au

Liability limited by a
scheme approved
under Professional
Standards Legislation



Electronic publication of the audited financial report

It is our understanding that the Wimmera Southern Mallee Local Learning and Employment Network intends to electronically present the audited financial report and auditor's report on its internet website. Responsibility for the electronic presentation of the financial report on the Wimmera Southern Mallee Local Learning and Employment Network website is that of Committee of Management of the Wimmera Southern Mallee Local Learning and Employment Network. The security and controls over information on the website should be addressed by the Wimmera Southern Mallee Local Learning and Employment Network to maintain the integrity of the data presented. The examination of the controls over the electronic presentation of audited financial report(s) on the Wimmera Southern Mallee Local Learning and Employment Network website is beyond the scope of the audit of the financial report.

Opinion

In our opinion, the financial report of Wimmera Southern Mallee Local Learning and Employment Network presents fairly, in all material respects the Wimmera Southern Mallee Local Learning and Employment Network financial position as at 31 December 2015, and of its financial performance and its cash flows for the year then ended in accordance with Australian Accounting Standards and Associations Incorporation Reform Act (Vic) 2012.



BRIAN WATTS
Certified Practicing Accountant

01 / 02 /2016

Watts Price Accountants
44 Wilson Street
HORSHAM VIC 3400



Horsham Office 44 Wilson Street Horsham Victoria 3400

ABN 40 876 591 185

Postal Address PO Box 118 Horsham Victoria 3402

Affiliations: Knights Accounting, 16 Cromie Street Rupanyup Victoria 3388

P 03 5382 3001 **F** 03 5381 1357 **E** mail@wattsprice.com.au **W** www.wattsprice.com.au

Liability limited by a
scheme approved
under Professional
Standards Legislation



Statement of Profit and Loss

WIMMERA SOUTHERN MALLEE LOCAL LEARNING AND EMPLOYMENT NETWORK INC.

STATEMENT OF PROFIT AND LOSS

FOR THE YEAR ENDED 31 DECEMBER 2015

	2015	2014
	\$	\$
Revenue	506,018	511,449
Advertising and promotion expense	13,665	2,428
Depreciation and amortisation expense	9,004	11,018
Employee expenses	253,811	282,257
Employee provisions expense	(2,546)	15,200
Motor Vehicle expenses	9,563	9,385
Other expenses	57,009	60,694
Project expenses	63,812	71,238
Rental expense	9,818	11,393
Net current year surplus	<u>91,882</u>	<u>47,836</u>
Other comprehensive income	-	-
Total comprehensive income for the year	<u>91,882</u>	<u>47,836</u>
Net current year surplus attributable to members of the entity	<u>91,882</u>	<u>47,836</u>
Total comprehensive income attributable to members of the entity	<u>91,882</u>	<u>47,836</u>

Statement of Financial Position

WIMMERA SOUTHERN MALLEE LOCAL LEARNING AND EMPLOYMENT NETWORK INC.

STATEMENT OF FINANCIAL POSITION

AS AT 31 DECEMBER 2015

	2015	2014
	\$	\$
ASSETS		
CURRENT ASSETS		
Cash on hand	354,530	584,517
Accounts receivable and other debtors	43,129	45,173
Prepayments	22,622	4,158
TOTAL CURRENT ASSETS	<u>420,281</u>	<u>633,848</u>
NON-CURRENT ASSETS		
Property, Plant and Equipment	<u>27,686</u>	<u>35,284</u>
TOTAL NON-CURRENT ASSETS	<u>27,686</u>	<u>35,284</u>
TOTAL ASSETS	<u>447,967</u>	<u>669,132</u>
LIABILITIES		
CURRENT LIABILITIES		
Accounts payable and other payables	17,227	26,738
Provisions	19,988	21,977
Income received in advance	-	278,924
Current tax liabilities	<u>1,728</u>	<u>23,794</u>
TOTAL CURRENT LIABILITIES	<u>38,943</u>	<u>351,433</u>
NON-CURRENT LIABILITIES		
Provisions	<u>14,110</u>	<u>14,667</u>
TOTAL NON-CURRENT LIABILITIES	<u>14,110</u>	<u>14,667</u>
TOTAL LIABILITIES	<u>53,053</u>	<u>366,100</u>
NET ASSETS	<u>394,914</u>	<u>303,032</u>
EQUITY		
Retained surplus	<u>394,914</u>	<u>303,032</u>
TOTAL EQUITY	<u>394,914</u>	<u>303,032</u>

Statement of Changes in Equity

WIMMERA SOUTHERN MALLEE LOCAL LEARNING AND EMPLOYMENT NETWORK INC.
STATEMENT OF CHANGES IN EQUITY
FOR THE YEAR ENDED 31 DECEMBER 2015

	Retained Surplus 2015 \$	Retained Surplus 2014 \$
Balance at 1 January 2015	303,032	255,196
Comprehensive Income		
Net Surplus for the year	91,882	47,836
Total Comprehensive Income attributable to members of the entity	<u>91,882</u>	<u>47,836</u>
Balance at 31 December 2015	<u><u>394,914</u></u>	<u><u>303,032</u></u>

Statement of Cashflows

WIMMERA SOUTHERN MALLEE LOCAL LEARNING AND EMPLOYMENT NETWORK INC.

STATEMENT OF CASHFLOWS

FOR THE YEAR ENDED 31 DECEMBER 2015

	2015	2014
	\$	\$
CASHFLOW FROM OPERATING ACTIVITIES		
Grants (state) operating received	202,150	601,451
Non Government Funded Projects funds received	17,000	56,348
Payments to suppliers and employees	(457,719)	(416,356)
Interest received	9,988	7,891
Net cash provided by operating activities	<u>(228,581)</u>	<u>249,334</u>
CASH FLOWS FROM INVESTING ACTIVITIES		
Proceeds from sale of property, plant and equipment	-	-
Purchase of property, plant and equipment	<u>1,406</u>	<u>5,359</u>
Net cash used in investing activities	<u>(1,406)</u>	<u>(5,359)</u>
CASH FLOWS FROM FINANCING ACTIVITIES		
Net increase/(decrease) in cash held	<u>(229,987)</u>	<u>243,975</u>
Cash on hand at beginning of financial year	<u>584,517</u>	<u>340,542</u>
Cash on hand at end of financial year	<u>354,530</u>	<u>584,517</u>

Statement by Committee of Management

**WIMMERA SOUTHERN MALLEE LOCAL LEARNING AND EMPLOYMENT NETWORK INC.
STATEMENT BY MEMBERS OF THE COMMITTEE
FOR THE YEAR ENDED 31 DECEMBER 2015**

In accordance with a resolution of the committee of Wimmera Southern Mallee Local Learning and Employment Network Inc., the members of the committee declare that the financial statements as set out:

- present a true and fair view of the financial position of Wimmera Southern Mallee Local Learning and Employment Network Inc. As at 31 December 2015 and its performance for the year ended on that date in accordance with Australian Accounting Standards (including Australian Accounting Interpretations) of the Australian Accounting Standards Board and requirements of the Associations Incorporation Reform Act (Vic) 2012; and
- at the date of this statement, there are reasonable grounds to believe that Wimmera Southern Mallee Local Learning and Employment Network Inc. will be able to pay its debts as and when they fall due.

The statement is signed for and on behalf of the committee by:

Chair:



Mardi Stewart
Chair's Name

Treasurer:



Carmen Munro
Treasurer's Name

Dated this 27 Day of January 2016.

