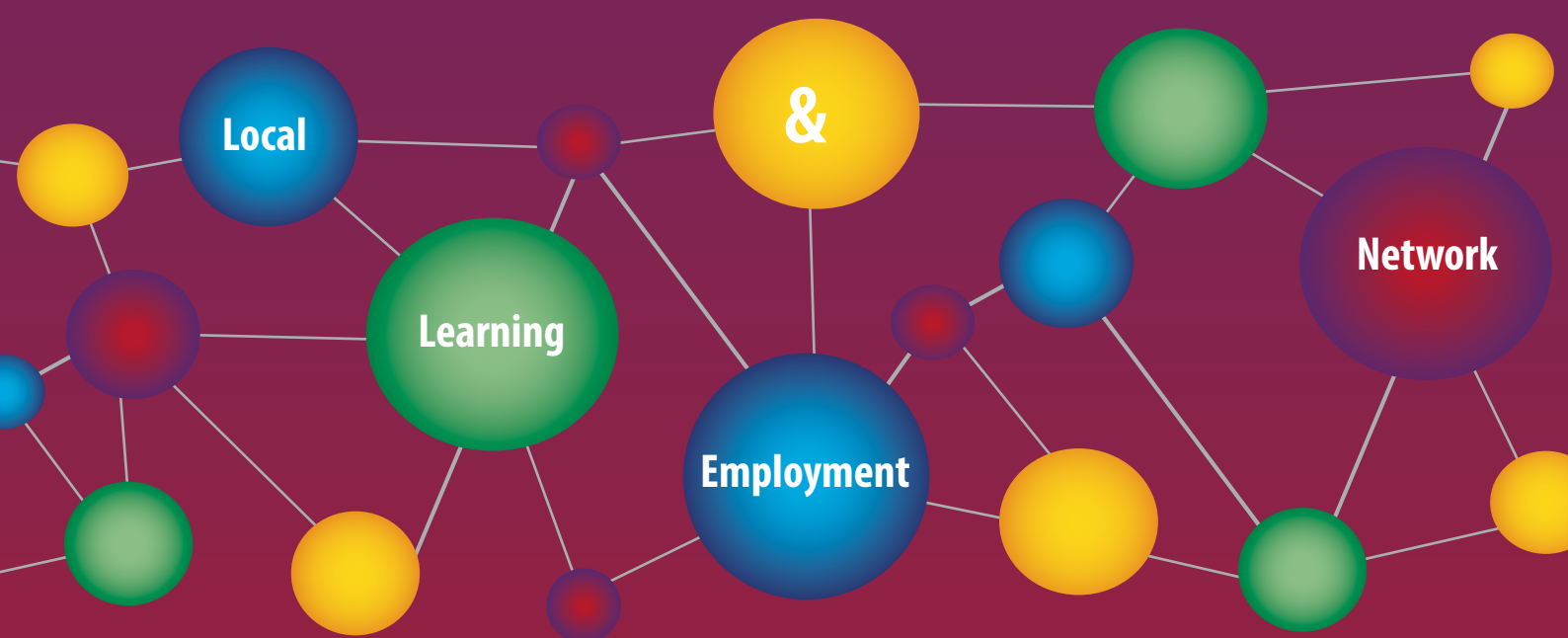


Annual Report 2014



WIMMERA
SOUTHERN
MALLEE
LLEN



Annual Report 2014

WIMMERA
SOUTHERN
MALLEE
LLEN



Contents

2014 – Year at a Glance	1
Chair & Executive Officer's Report	2
Committee of Management	4
Staff	5
Strategic Plan	6
Our Service Region	8
Programs Established	9
Workplace Learning Coordinator's Program	10
Support for Schools	11
Partnership Broker's Program	12
MATES Mentoring Program	14
Reading Buddies Program	15
Parent and Community Engagement	16
Western Victorian Careers Expo	18
Partnerships brokered by WSMMLLEN	20
Program partners	22
WSMMLLEN Members	26
Financial Statements	30

Vision

The Wimmera Southern Mallee Local Learning and Employment Network's objective is to assist young people to complete year 12 or its vocational equivalent. This includes traineeships and apprenticeships. A particular focus of our work is with young people from a disadvantaged background.

Mission

To create partnerships between industry, education and the community that develop positive futures for our young people.

Acknowledgements

WSMMLLEN acknowledges and thanks the following organisations and government departments for their funding support:

- Federal Department of Education - Partnership Broker's Program
- Department of Education and early Childhood Development (DEECD) - Partnership Broker's Program
- Department of Prime Minister and Cabinet - Parent and Community Engagement Program
- Foundation for Rural and Regional Renewal (FRRR) - Let's Read
- Rupanyup and Minyip Community Bank - Let's Read Yarriambiack
- Wimmera Regional Sports Assembly - Wimmera Sports Mentoring Program
- Wimmera Southern Mallee VET Cluster - VET Coordination

Printing: Wimmera Mail Times

Graphic Design: Lorraine Merton

© 2015, Wimmera Southern Mallee LLEN

www.llen.com.au

2014 – Year at a Glance

MATES Reading Buddies programs established in 11 schools with over 70 community volunteers reading with children on a regular basis

18 MATES Mentoring programs have matched 281 mentors with 281 young people since the commencement of the program in 2011

Let's Read Program established across the 4 Wimmera Southern Mallee shires with 400 Let's Read packs distributed to families

40 school staff from 21 schools attended PD to support the implementation of the SenseAbility resilience program

Jobs4Me program enabled a total of 48 Koorie students to participate in three industry visits

16 primary and 6 secondary Koorie students received intensive support in a pilot literacy enhancement program

More than 440 young people have participated in junior sports programs over the past 4 years through the WSMLLEN brokered Sports Mentoring partnership

More than 50 young people participated in the Wimmera Southern Mallee Sports Mentoring Program in 2014

21 Community Action Network meetings held in 2014, with 256 attendances from 44 organisations, coming together to support young people in their local community.

Hands on Learning Programs established in 4 schools supporting students at risk of disengaging from education

73 businesses signed up to support local schools through the School Friendly Business programs

Sponsorship and support of the 27th Western Victorian Careers Expo attended by more than 2,000 people

'Knowledge is Power,' Alcohol and Other Drugs Education program delivered at 3 schools with a total of 35 sessions attended by 150 young people

Youth Mental Health First Aid Training has been delivered to 119 Yarriambiack Shire community members since the inception of the Live Your Life program



Chair & Executive Officer's Report

The Wimmera Southern Mallee Local Learning and Employment Network's (WSMLLEN) mission is to create partnerships between industry, education and the community that develop positive futures for our young people. Our mission drives our Committee of Management and our staff to improve education and life outcomes for our young people. We have a particular focus on addressing disadvantage and targeting support for those young people most in need.

The year began with a move to new offices at Federation University in February. The move has been a great success and locates the WSMLLEN right in the heart of Horsham's education precinct. Our thanks go to Head of Campus - Wimmera, Geoff Lord, and Federation University for providing the opportunity and their ongoing support.

The WSMLLEN's members and partners can reflect on the achievements of 2014 and be proud that the organisation has delivered strong outcomes for our young people. Our work has a real impact in the communities we work with across the Wimmera Southern Mallee region which covers an area in excess of 28,000 square kilometres.

Partnerships

We could not achieve our objectives without the support of our partners. The work and contribution of our partners is greatly valued and appreciated. The WSMLLEN has a clear focus on achieving our mission through the brokering, creation and maintenance of strong partnerships to support our youth and the schools that educate them.

There are currently 50 active partnerships brokered by the WSMLLEN, working to improve the education and life outcomes of our young people. The WSMLLEN is a member of 15 other partnerships and networks to enhance collaboration and to facilitate and support the achievement of our strategic goals.

Significant Outcomes

Collaborative partnerships mean that we can achieve much more working together than any one agency can achieve working alone. It is only through the collective effort and contribution of our partners that the following significant outcomes were achieved. Over the year we have supported, maintained and expanded existing programs and developed 21 new partnerships and programs, including:

- The Let's Read Program
- MATES Mentoring Program
- MATES Reading Buddies Program
- Literacy Intervention Program
- Jobs4Me Program
- School Friendly Business Program
- Wimmera Southern Mallee Sports Mentoring Program
- Community Action Networks
- Western Victorian Careers Expo
- Live your Life - Youth Mental Health First Aid Training
- Knowledge is Power (Wimmera Drug Action Taskforce - Alcohol and Other Drugs Education program)

Financial

The WSMLLEN continues to operate in an efficient and prudent way. Our Finance Committee meets on a regular basis to ensure that our operations are tracking in line with budgeted expenditure. Expenses were \$77,000 under budget and the organisation maintains a strong balance sheet with \$303,031 of retained earnings (equity) at the end of 2014.

Committee of Management

We would like to acknowledge and thank the WSMLLEN Committee of Management for their valuable contribution over the past year. The committee is made up of passionate, committed and skilled people willing to donate their time and expertise to improve the lives of young people throughout the region. The committee guides and governs the WSMLLEN on a voluntary basis. The combined knowledge and expertise of the committee is a wonderful asset to the organisation and ensures that our strategic direction, governance and probity are maintained at very high levels.

Staff

The WSMMLLEN team is hard-working, passionate and dedicated to improving education and life outcomes of our region's young people. We regularly receive positive feedback from our partners and stakeholders regarding the excellent work and achievements of our staff members.

We would like to recognise and thank the WSMMLLEN staff for their performance and contribution throughout the year. Our team throughout 2014 included Dimity O'Bryan (Workplace Learning Coordinator), Lorraine Merton (Administration Officer), Dean O'Loughlin and Joy Forbes (Partnership Brokers), Sarah Wickes, Lyn Sudholz, Carolynne Hamdorf and Fiona McKeown (Project Officers) and Roy Henwood (Finance Officer).

We farewelled Sarah Wickes and Dean O'Loughlin in the middle of the year and their positions were very ably filled by Lyn Sudholz and Joy Forbes. Carolynne Hamdorf and Fiona McKeown joined the team in the second half of the year to support the delivery of the literacy intervention project for Koorie students. We wish departing team members all the best in their future endeavours.

Acknowledgements

The WSMMLLEN is indebted to our partners and stakeholders. Our achievements would not be possible without their support and contribution. We would like to acknowledge and thank our region's schools, stakeholders and partners for their strong engagement and contribution to the many WSMMLLEN partnerships during 2014. Our principals and schools do a great job and their continued support is an essential element in the success of our partnership initiatives.

Our thanks to the Federal Department of Education for their support of the Partnership Brokers program over the past five years. We greatly appreciate the support from the Department of Prime Minister and Cabinet to fund the project aimed at improving the literacy of Koorie students and improve the engagement of their families. We would like to acknowledge the support received from the DEECD and the Victorian Government. Thank you to Brendan Ryan and the Horsham and Ballarat Regional Offices' DEECD staff. Our thanks also, to Bronwen Heathfield, Teresa Durka, Ruth Barnes and the team at the DEECD Pathways and Participation Division in Melbourne.



Mandi Stewart
Chair

Looking Forward

The WSMMLLEN faced an uncertain future throughout most of 2014. The majority of our funding in 2014 was from the Federal Government's Department of Education through the delivery of the Partnership Brokers program. The Federal Government discontinued the Partnership Brokers program at the end of 2014. LLENs across the state were challenged by the uncertainty of funding beyond 2015. It was only in November 2014 that the position became clearer when the newly elected State Government committed to funding for the following four years. Significant funding reductions will apply over the next four years due to the cessation of the Federal Government's support through the Partnership Brokers program.

All LLENs are appreciative of the State Government's support and commitment over the next four years. We accept the challenge that we need to do more with less, and we are confident that we can maintain a high level of support for our partnerships, programs and partners across the region.

We are excited by the opportunities and challenges of 2015 and beyond. Many of our programs are having a tremendously positive impact on young lives and we are committed to providing the highest level of support to those who most need our assistance. Our organisation is owned by the community and we exist to serve and strengthen our region. Education changes lives and provides untold opportunities. The collective efforts of the WSMMLLEN and our partners are directed towards ensuring that all young people have opportunities and the support and access to receive a great education.

Our mission continues to define our core purpose, what we do, who we are and why we exist. It is as relevant today as it was when it was first created in 2002. We maintain our strong commitment to achieving our mission of creating partnerships between industry, education and the community that develop positive futures for our young people.



Tim Shaw
Executive Officer

Committee of Management

Category 1: Schools

Dr Joanna Day - Principal, Murtoa College & Nhill College

Peter Gutteridge - Principal - St. Brigid's College

Graeme Holmes/ Rob Pyers - Principal, Horsham College

Category 2: TAFE Institutes or Universities with TAFE Sector

Geoffrey Lord - Federation University - Head of Western Campus

Category 3: Adult Community Education Organisations

Trish Adler - Coordinator, SLAAM (Murtoa Neighbourhood House)

Category 4: Other education and training organisations including private registered training organisations, universities and group training companies

Mandy Kirsopp - CEO Wimmera HUB

Category 5: Trade Unions

Vacant

Category 6: Employers, peak employer organisations, regional employer organisations and employment agencies

Peter Drummond - Manager, People and Culture, GWM Water

Category 7: Local Government

Ray Campling - Chief Executive Officer, Yarriambiack Shire

Wendy Robins - Councillor, Hindmarsh shire

Category 8: Other community agencies and organisations, Commonwealth and State Government departments, School Focussed Youth Service, Adult, Community and Further Education Regional Councils, Regional Youth Councils, Area Consultative Committees, parent organisations etc.

Brendan Ryan - Secretary - Senior Advisor, Regional Performance and Planning, South Western Region DEECD

Alistair Houston - Manager, Residential Services, Wimmera Uniting Care

Category 9: Koorie organisations, peak Koorie agencies and regional Koorie Organisations

Vacant

Category 10: Community Members

Carmen Munro - Treasurer - Accountant - Green Taylor Partners, Horsham

Mandi Stewart – Chair - Department of Human Services

Staff



Tim Shaw
Executive Officer



Dimity O'Bryan
Workplace Learning Coordinator



Lorraine Merton
Administration Officer



Lyn Sudholz
Project Officer



Joy Forbes
Partnership Broker



Roy Henwood
Finance Officer



Carolynne Hamdorf
Project Officer



Fiona McKeown
Project Officer



Dean O'Loughlin
Partnership Broker

Sarah Wickes
Project Officer

Strategic Plan

Goal

1

To increase our schools' engagement with stakeholders in their community to improve students' aspirations, education and transition outcomes

Goal

2

To increase the number of businesses and organisations partnering with our schools

Partnership Broker Program Objectives

The Partnership Brokers program objective is to facilitate stakeholder engagement, build community capacity and infrastructure and drive the government's education reform and social inclusion agendas to improve education and transition outcomes for all young people.

These partnerships may focus on improving outcomes for specific groups of young people, including those from disadvantaged groups, humanitarian refugees and Indigenous young people. The Partnership Brokers program is based on the principle that learning and development of young people is the collective responsibility of governments, education and training providers, business and industry as well as parents and families and the broader community.

The Federal Department of Education has defined the outcomes for each major stakeholder group. Our goals have been set to support the achievement of these outcomes.

Education and Training Providers

Education and training providers partnered with stakeholders in their community to ensure all young people participate in challenging, relevant and engaging learning that broadens personal aspirations and improves education and transition outcomes.

Goal 1: To increase our schools' engagement with stakeholders in their community to improve students' aspirations, education and transition outcomes

Our current partnerships that support achieving this outcome:

- 6 Community Action Networks
- 18 MATES mentoring programs (Community Champions and community volunteers)
- 11 MATES Reading Buddies programs
- 2 School Friendly Business programs
- Hands on Learning Murtoa
- Hands on Learning Hopetoun
- Hands on Learning Horsham
- Hands On Learning Rainbow
- MATES JET (Jobs, Education & Training) program
- KOOKAS Club (Koorie Kids After School)
- Jobs 4 Me program (Koorie Careers sessions & industry tours)
- Let's Read Yarriambiack
- Let's Read Hindmarsh
- Let's Read West Wimmera
- Let's Read Horsham
- Workplace Learning Coordinator program
- Workforce Development Forum (not brokered by WSMMLLEN).

Business and Industry

Business and industry actively engaged in sustainable partnerships that support the development of young people, contribute to the skills and knowledge of the future workforce and improve young people's education and transition outcomes.

Goal 2: To increase the number of businesses and organisations partnering with our schools

WSMMLLEN brokered partnerships that support achieving this outcome:

- 2 School Friendly Business Programs
- 6 Community Action Networks
- 18 MATES mentoring programs (Community Champions and community volunteers)
- 11 MATES Reading Buddies program
- Hands on Learning Murtoa
- Hands on Learning Hopetoun
- Hands on Learning Horsham
- Hands On Learning Rainbow
- MATES JET Program (Jobs, Education & Training) program
- KOOKAS Club (industry tours)
- Jobs4Me (industry tours)
- Let's Read Yarriambiack
- Let's Read Hindmarsh
- Let's Read West Wimmera
- Let's Read Horsham
- Workplace Learning Coordinator program
- Workforce Development Forum (not brokered by WSMMLLEN).

Strategic Plan

Goal

3

To improve the participation of vulnerable young people and their families in education

Goal

4

To increase the re-engagement of young people into programs leading to credentials

Parents and Families

Parents and families participating in partnerships that provide an informed and supportive environment for all young people to enable lifelong learning and career and pathway planning, and improve their education and transition outcomes.

Goal 3: To improve the participation of vulnerable young people and their families in education

WSMLLEN brokered partnerships that support achieving this outcome:

- 6 Community Action Networks
- 18 MATES mentoring programs (Community Champions and community volunteers)
- 11 MATES Reading Buddies program
- Hands on Learning Murtoa
- Hands on Learning Hopetoun
- Hands on Learning Horsham
- Hands On Learning Rainbow
- MATES JET (Jobs, Education & Training) program
- Wimmera Mallee Sports Mentoring program
- Jobs4Me (industry tours)
- Koorie Careers sessions (industry tours)
- Let's Read Yarriambiack
- Let's Read Hindmarsh
- Workplace Learning Coordinator program.

Community Groups

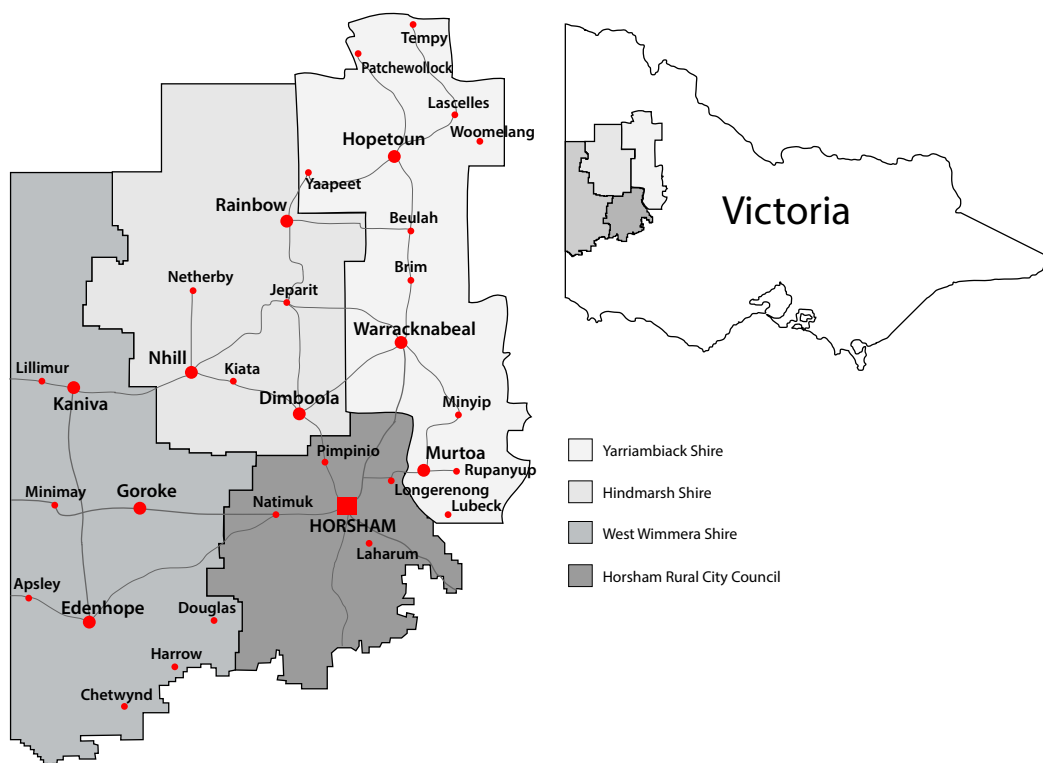
Community groups participating in partnerships that harness resources and build social capital to support young people to identify and achieve their goals and improve their education and transition outcomes.

Goal 4: To increase the re-engagement of young people into programs leading to credentials

WSMLLEN brokered partnerships that support achieving this outcome:

- 6 Community Action Networks
- 18 MATES mentoring programs (Community Champions and community volunteers)
- Hands on Learning Murtoa
- Hands on Learning Hopetoun
- Hands on Learning Horsham
- Hands On Learning Rainbow
- MATES JET (Jobs, Education & Training) program
- Workplace Learning Coordinator program.

Our Service Region



Schools in Shire Districts

Yarriambiack Shire Schools 14 Schools	Hindmarsh Shire Schools 9 Schools	West Wimmera Shire Schools 5 Schools	Horsham Rural City Schools 9 Schools
Beulah Primary School	Dimboola Primary School	Apsley Primary School	Holy Trinity Lutheran School (Horsham)
Hopetoun P-12 College	Dimboola Memorial Secondary College	Edenhope College	Horsham Secondary College
Minyip Primary School	Jeparit Primary School	Goroke P-12 College	Horsham Primary School
Murtoa College	Nhill College	Kaniva College	Horsham Special School
Our Lady Help of Christians School (Murtoa)	Nhill Lutheran School	St Malachy's Primary School (Edenhope)	Horsham West – Haven Primary School
Rupanyup Primary School	Rainbow Primary School		Laharum Primary School
St Joseph's Primary School (Hopetoun)	Rainbow Secondary College		Natimuk Primary School
St Mary's Primary School (Warracknabeal)	St Patrick's School (Nhill)		St Brigid's College
Tempy Primary School	St Peter's Lutheran School (Dimboola)		Ss Michael and John's Catholic Primary School (Horsham)
Warracknabeal Secondary College			
Warracknabeal Primary School			
Warracknabeal Special Development School			
Woomelang Group School (Primary)			
Yaapeet Primary School			

Programs Established

The Wimmera Southern Mallee LLEN service area covers 28,000 square kilometres across the four shires of West Wimmera, Yarriambiack, Hindmarsh and Horsham Rural City Council.

Programs established and supported by Wimmera Southern Mallee LLEN in local areas include:

Hindmarsh Shire

Nhill

MATES Mentoring Program
Community Champions
Nhill Community Garden
Nhill Community Action Network
School Friendly Business Program *
Let's Read *

Dimboola

MATES Mentoring Program
Community Champions
Let's Read *
WSM Sports Mentoring Program
PACE - Quick Smart Program

Jeparit

Let's Read *

Rainbow

MATES Reading Buddies Program *
Let's Read *
Hands On Learning*
Rainbow College Breakfast Club*

West Wimmera Shire

Kaniva

MATES Mentoring Program
MATES Reading Buddies Program
Community Champions
WSM Sports Mentoring Program
Let's Read *

Goroke

MATES Mentoring Program
Let's Read *

Edenhope

MATES Mentoring Program *
Let's Read *
Edenhope Community Action Network *
Sports Mentoring Program

Apsley

MATES Reading Buddies Program *
WSM Sports Mentoring Program

Yarriambiack Shire

Hopetoun

MATES Mentoring Program *
Hands On Learning
Live Your Life Project

Murtoa

MATES Mentoring Program
Murtoa Community Action Network
Live Your Life Project
Let's Read
Hands On Learning

Tempy

MATES Reading Buddies Program

Warracknabeal

MATES Mentoring Program
Satellite VCAL
Warracknabeal Primary School
St Mary's Primary School
MATES Reading Buddies Program
Warracknabeal Primary School *
St Mary's Primary School*
Community Champions
WSM Sports Mentoring Program
Warracknabeal Primary school
St Mary's Primary School
Warracknabeal Community Action Network
Live Your Life Project
Let's Read
School Friendly Business Program

Woomelang

Reading Buddies Program *

Yaapeet

MATES Reading Buddies Program *
WSM Sports Mentoring Program

Horsham Rural City

Horsham

MATES Mentoring Program:
Horsham College
Ss Michael and Johns Primary School *
Horsham Special School
Horsham Satellite VCAL
Horsham Primary School
Rasmussen Campus
298 Campus
Horsham West Primary School
Wimmera Uniting Care
MATES Reading Buddies:
Horsham Primary School
Rasmussen Campus
298 Campus
Horsham West Primary School
Community Champions
MATES JET Program
WSM Sports Mentoring Program
Horsham Primary School
Horsham Special Development School
Ss Michael & St John's Catholic Primary School
Koorie Kids After School (KOOKAS) Club
Horsham Community Action Network
Koorie Community Action Network
School Friendly Business Program
Horsham Primary School Swimming Program
Hands On Learning
Let's Read *
Jobs4Me
Wimmera PACE Literacy project

* denotes new programs established in 2014

Workplace Learning Coordinator's Program

Workplace Learning Coordinator Program

The Workplace Learning Coordinator Program (WLCP) assists secondary schools in the region with their Work Experience (WE), Structured Workplace Learning (SWL) and School Based apprenticeships and Traineeships (SBATs), through increasing opportunities for young people to undertake work placements with local employers and businesses.

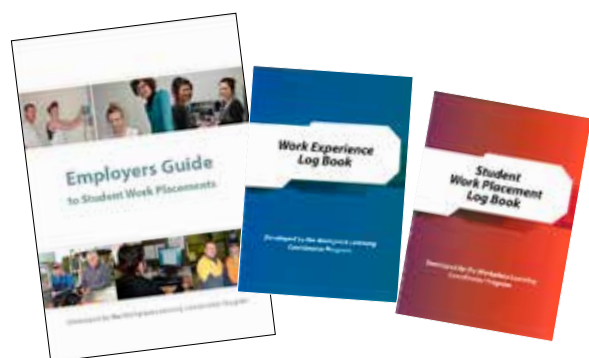
In 2014, over 270 students participated in workplace learning, including 34 SBATs, 119 SWL placements and 126 Work Experience placements. The WLC worked closely with Federation University and individual schools to ensure that all students completing the Certificate III in Health Services Assistance were able to complete their mandatory 40 hours of structured work placement. As a result of completing two rounds of placement arranged by the WLC, a student from Kaniva was offered a full time traineeship with her host employer upon completion of year 12 at the end of 2014.

The WLCP program provided each student undertaking a work placement with a log book to assist them to record the details of their placement and to increase their engagement within the workplace. Log Books were provided to schools free of charge. Copies of the Employers Guide to Student Work Placement were also made available to employers to assist their compliance with host employer requirements and responsibilities and to provide high quality placements to students.

Over 70 businesses have now been registered with the School Friendly Business Program. The program aims to strengthen

relationships between schools and local businesses by encouraging the school community to support businesses that are supportive of the school. There are now businesses registered in Warracknabeal, Horsham, Dimboola, Rainbow, Nhill, Edenhope and Murtoa. School Friendly Business lunches were held in Horsham and Warracknabeal, giving schools an opportunity to thank their local businesses for their support and for members of the school and business community the chance to discuss any challenges or opportunities presented by their relationship.

The WLC also organised industry tours for Koorie students as part of the Jobs4Me initiative. The industry tours gave students an opportunity to find out about the career paths available in their local area. Students completed a tour of the Grains Innovation Park, including the Department of Environment and Primary Industry laboratories, fire fighting department and the Australian Grains Genebank. Students were also given an opportunity to take a tour of the Victorian Police Academy in Glen Waverly.



Support for Schools

VET Coordination

WSMLLEN took over the role of VETiS (Vocational Education and Training in Schools) cluster coordination at the beginning of term 3 2014. The responsibilities of the VET coordinator role include:

- Setting agendas and taking minutes for monthly VET cluster meetings
- Disseminating relevant information to all stakeholders including schools and RTOs
- Acting as liaison between schools and RTOs
- Organising and running Try VET Day in July. Try VET Day gave students planning to enrol in a VET subject in 2015 an opportunity to try out their top two preferences in order to help them decide which course to choose
- Gathering information on each course being offered in 2015 and putting it together in the 2015 VETiS Handbook. The Handbook included information such as course names and codes, the names of the RTO delivering each course, an overview of the units delivered in each course, a list of possible study and career pathways related to each course, bus timetables and enrolment forms
- Collection and processing of enrolment forms for all students enrolling in VET for 2015
- Organisation and running of VET Induction Day in October.

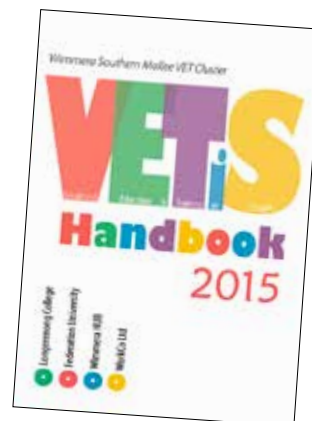
Professional Development for School Staff

Framework for Understanding Poverty

Schools throughout the region were offered free training provided by the LLEN on the Framework for Understanding Poverty. Approximately 80 staff from Horsham West and Haven Primary school, Hopetoun P-12 College and Goroke P-12 College took up the opportunity to gain a greater understanding of families living in generational poverty and the challenges this presents to children growing up in those families when it comes to succeeding at school.

Youth Support Services

In July 2014, WSMLLEN ran a professional development day for teachers and student well-being staff called 'Who's Who in the Zoo'. The PD, attended by approximately 50 people, included representatives from ten local organisations that deal with youth, giving a presentation on their organisation, what services they provide for youth, any eligibility criteria for accessing their services and the relevant referral methods.



Who's Who Forum, Horsham

Partnership Broker's Program

Supporting Schools in Building Resilience

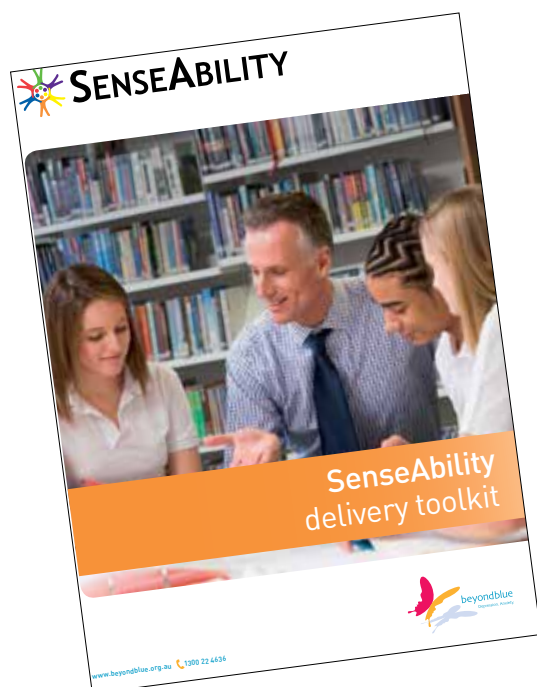
A partnership between the DEECD, Wimmera Uniting Care – School Focused Youth Service and the Wimmera Southern Mallee LLEN delivered a professional development day for the region's school staff. The objective of the day was to support schools to deliver health programs that build life skills and resilience and promote general health and well-being.

An interactive PD day was delivered to more than 40 teachers and health and well-being staff from 21 schools. The highly successful day provided hands-on instruction and training to participants in the delivery of the SenseAbility program. The program was developed by Beyond Blue to meet the needs of schools and young Victorians.

The day had four main objectives:

1. to provide cost free sustainable resilience resources
2. to support and up-skill staff in the delivery of the SenseAbility program
3. to assist schools to meet compliance and accountability requirements
4. improve student well-being, empowerment and engagement.

The highly successful day culminated in the distribution of free SenseAbility kits to each participating school.



Let's Read

The Wimmera Southern Mallee LLEN has brokered four significant partnerships to plan and implement the Let's Read program in the Yarriambiack, Hindmarsh, Horsham and West Wimmera Shires. Through these partnerships the Wimmera Southern Mallee region is leading the nation in an effort to improve literacy rates. This is the first time that the program has been rolled out in every community across four shires. The program will support all families across the 28,500 km² covered by the WSMLLEN.

The Let's Read program was developed by the Royal Children's Hospital in Melbourne. Wimmera Southern Mallee LLEN and local stakeholders have partnered with The Murdoch Children's Research Institute and The Smith Family to implement Let's Read in communities across the Wimmera Southern Mallee region.

The program supports the work already being done by Maternal and Child Health nurses by providing books and resources to families at 4 different child age points. Families receive the resources and support for their babies at 4 months, 12 months, 18 months and 3½ years. More than 400 babies and their families were engaged by the program in 2014 and received support, encouragement, books and resources.

Many partners have come together to plan and implement the program, including our local governments, health providers, the Wimmera Regional Library Corporation, Wimmera Uniting Care, community groups and our region's schools, kindergartens and playgroups. The success of the program is due to the contribution of all partners and we would particularly like to acknowledge our wonderful hard-working Maternal and Child Health Nurses for their support of all young families across the region



Launch of the Let's Read Horsham Program at Horsham Library

Partnership Broker's Program

Hands on Learning

Hands on Learning (HOL) in the Wimmera is an ongoing success. Hopetoun, Murtoa and Horsham Colleges have been joined by Rainbow College to deliver the program in 2014. The Wimmera HOL program was featured as one of the highlights of the year, in the most recent Hands on Learning Annual Report:

'At the instigation of the Wimmera Southern Mallee Local Learning and Employment Network, three Wimmera schools visited Frankston to experience HOL up close and personal. Hopetoun, Murtoa and Horsham Secondary Colleges will start HOL next financial year to form a Wimmera cluster of schools supported by a three-year flagship grant from the Newsboys Foundation.'

The Hands on Learning program engages at-risk students in years 7-10. Students work one day a week on a 'hands-on' project and 4 days in the classroom. Hands on Learning students work on projects at school and out in the community. Some great examples of HOL projects are

- the Horsham College's HOL team's participation in BlazeAid to renew fire damaged farm fences destroyed by the Grampians bushfires
- Murtoa College HOL team building a large shed on the Murtoa College site
- Hopetoun College HOL team working on town beautification projects at Lake Lascelles.

The program improves attendance, engagement and achievement. The students build many things, but most importantly, their self worth, their social skills and their confidence. The success of the Wimmera HOL programs has seen the program implemented at Donald, Wycheproof, and three schools in the Warrnambool area.



Hands On Learning students support Blaze Aid in The Grampians

The Wimmera Mallee Sports Mentoring program

Program snapshot

Tony is a young Aboriginal student at a local school. His non-Indigenous dad has separated from his mother and he now has a new de facto partner and four children to support. Dad is unemployed and struggles with his literacy but is supportive of his children's education. Tony was nominated by his school for participation in his local football club's Auskick program three years ago. Funding through the Sports Mentoring program enabled Tony to join the program. Tony enthusiastically participated in the Auskick program and now plays regularly each season with the local competition's junior colts team. Tony made new friends, and continues to develop new skills and connections through his association with the club. During footy season, he gets a ride with his team mates' families to the 'away' games. He is consistently exposed to good, supportive families and role models through his membership of the team. Tony is now in Grade 6 and doing well at school and in sport. His former principal attributes some of this success to extending his network of support through the sports mentoring program.

(Name has been changed to preserve Tony's anonymity)

This successful partnership was first brokered by the WSMLEEN in 2010. Partners include the region's primary schools, the Wimmera Regional Sports Assembly, Auskick, netball and hockey coordinators, local sporting clubs, and the community.

The program enables children to participate in junior sports programs across the region. It is targeted at children who are not participating in sports due to their family's financial circumstances. More than 50 young people participated in the program in 2014. More than 440 young people have participated in junior sports programs since its inception.

It's particularly pleasing to see children with a disability, Koorie children and children from migrant families participating in team sports with their peers.

The program increases their physical activity, promotes social inclusiveness, and increases the participants' connections with positive role models and the community. An increase in the engagement of families with their children's activities and their school is one of the many positive outcomes of this program.

MATES Mentoring Program

The first goal in our current strategic plan is to increase our schools' engagement with stakeholders in their community to improve students' aspirations, education and transition outcomes. The MATES Mentoring program plays a major role in linking the students to a range of community members who can support the student during the year and assist in developing networks for these young people beyond the school yard. Although a number of staffing changes occurred at the LLEN over 2014, mentoring continued on strongly across the region and will increase further in 2015.

Surveys of the students collated at the end of 2013 provide the following snapshot of the success of mentoring in the schools involved:

- 92% of students feel more confident
- 70% of students believe their behaviour is better
- 60% of students go to school more often
- 81% of students have a better attitude towards school
- 85% of students feel better about themselves

From the surveys of the mentors, the following comments were made:

- 'I have found the MATES program very rewarding and always have a smile when I meet my mentee.'

- 'MATES was a great way to volunteer in the community. The experience I got out of it was positive and I would do it again. It's not very time consuming and it was very flexible.'
- 'I continue to enjoy the time I spend with my mentee. We have become good mates and I am made to feel very welcome by all of the family.'
- 'I really enjoyed being part of the program and continue to see my mentee during holidays and over the summer.'
- 'It's a great opportunity to give back to the community and to make a small difference.'
- 'While I am not sure if I had any real influence on my MATE, I have spoken to his teachers and they assure me that I have.'
- 'Our time together is very relaxing for me and I use it as part of my self-care plan.'

As an overall snapshot, 100% of mentors either strongly agreed or agreed to recommend MATES mentoring to others.

Since 2010, 281 young people have been matched with a volunteer mentor. Over this time, more than 200 community members have generously offered their time to train as a mentor and work fortnightly with students participating.



MATES Mentoring Information Evening, Horsham

Mentoring Programs in the Wimmera Southern Mallee Region						
Mentoring Program Participants	2010	2011	2012	2013	2014	Total
Dimboola Memorial Secondary College	9	15	11	8	11	54
Edenhope College				6		6
Goroke P-12			8	5	4	17
Hopetoun P-12 College					3	3
Horsham College		8	12	7	4	31
Horsham PS 298			16	9	2	27
Horsham PS Rasmussen			6	7	3	16
Horsham Satellite VCAL			4			4
Horsham Special School			7			7
Horsham West PS					3	3
Kaniva College			11	7	7	25
Murtoa College		7	9	4	5	25
Nhill College		9	11	10	4	34
Ss Michael & Johns PS					1	1
St Mary's Warracknabeal				8		8
Warracknabeal Primary School				8		8
Warracknabeal Satellite VCAL		10				10
Wimmera Uniting care				2		2
Total	9	49	95	81	47	281

Reading Buddies Program

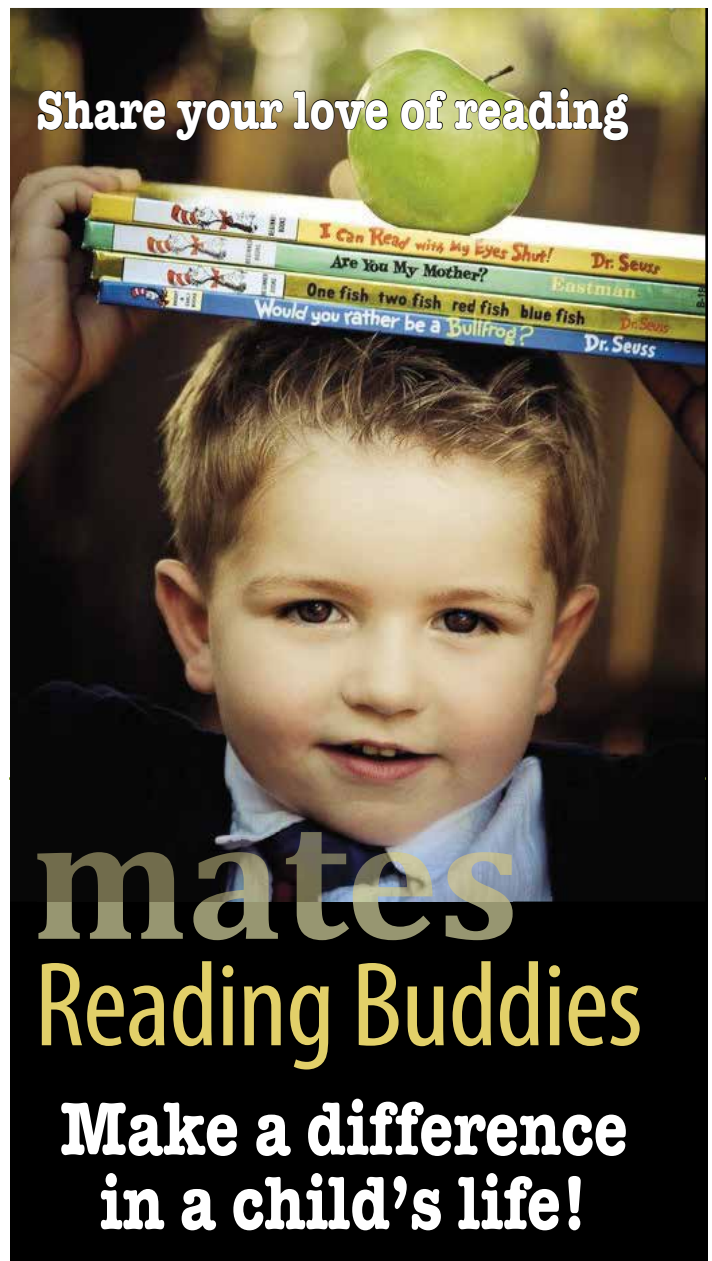
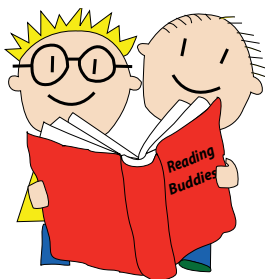
The MATES Reading Buddies Program was developed by Wimmera Southern Mallee LLEN and commenced at Horsham Primary School, Rasmussen Campus in 2012. By the end of 2014, the Program had been established in 11 schools with over 70 volunteers reading with children on a regular basis in their local schools.

In 2014, four students from Horsham College's Connect Ed Re-engagement program undertook specially modified training sessions to become reading buddies to support younger children in a local primary school and kindergarten. This initiative not only provided extra reading buddies, but was extremely valuable for the students who undertook the training. In a survey of Connect Ed students who participated in the Reading Buddies Program, students were asked to list the benefits to themselves of participating in the program. Comments included:

- 'It feels good to help kids'
- 'Something productive'
- 'Give back to the community'
- 'Feel appreciated'
- 'Learned new things'
- 'Encouragement'

The Reading Buddies volunteers listen to children read on a regular basis. Their role is to encourage, praise, and provide students with an extra opportunity to read with an adult.

If children struggle to master basic reading skills, they are at a much greater risk of disengaging when they reach secondary college. The Reading Buddies Program was developed to address this issue.



Reading Buddies Training - Connect Ed

Parent and Community Engagement (PACE) Program

Parent and Community Engagement (PaCE)

The Wimmera Southern Mallee LLEN secured funding from the Department of Prime Minister and Cabinet to increase the engagement of Aboriginal parents and community members with their children's school and education.

The Wimmera PaCE project has brought together a range of community partners, including Delkaia Best Start program (Wimmera Uniting Care), Goolum Goolum Aboriginal Cooperative, Horsham Rural City Council (Maternal and Child Health Nurses), Wimmera Regional Library Corporation, Let's Read (Royal Children's Hospital, Murdoch Children's Research Institute and the Smith Family), the DEECD, Dimboola and Horsham schools, kindergartens and playgroups.

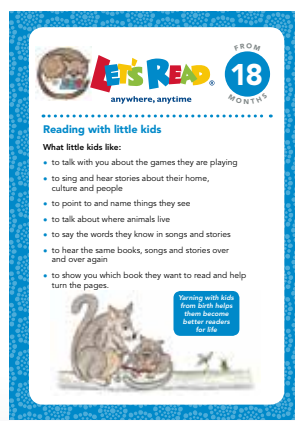
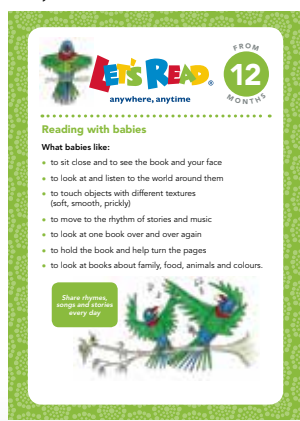
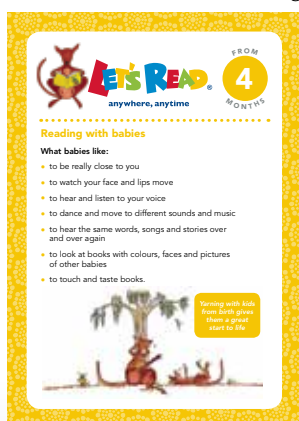
The project has engaged parents and families to give them the assistance, knowledge and skills to support their children's reading. Many parents were not aware of how important it is to read daily to their children from birth. The program objectives are to:

1. Provide every family of children aged 0-5 with 'Let's Read' books and resources.
2. Provide enhanced support to families and students who need support to achieve age appropriate literacy standards.
3. Build school-community engagement and encourage parents and families to participate in school events, with a particular focus on events focusing on literacy.

Since the program was implemented in August 2014, 34 babies/ children and their families have received the Let's Read resource bags. The bags include two books, a 'read aloud' DVD, reading tip sheet, recommended book list, a fridge magnet, a laminated alphabet place mat, a local library flyer and a card detailing the 10 key visits families should make to the Maternal and Child Health service.

Literacy support for students has been provided at Horsham Primary School and Horsham College. Extra support was provided to six Horsham College Koorie students. The Year 7 & 8 students worked with Fiona McKeown to improve their literacy skills. After consultation with College staff and an initial assessment, Fiona created an individualised program for each student. Students made significant progress over the second semester with their reading and writing skills.

'Students made significant progress over the second semester with their reading and writing skills.'



PACE Program

Students at the Rasmussen campus of Horsham Primary School made very strong progress in their reading levels. On average, the Koorie students in the program progressed faster than the rest of the class since the program commenced in July 2014. Over Terms 3 & 4, 2014, participating students achieved a 28% higher improvement in reading comprehension than the rest of the class.

Another indicator is the students' progress through graded take-home readers, provided by class teachers. Koorie students participating in the literacy intervention program, on average, progressed 37% further in their take home reader levels.

Additional intensive reading support was provided to 16 Aboriginal children in Grades Prep-3 in the second semester. Carolynne Hamdorf worked with small groups of 3 or 4 children on very direct language and reading skills. Rasmussen campus principal, Brenda Evans said, 'The children really enjoy the program, it's lots of fun and it makes a real difference in their reading and writing.'

'The children really enjoy the program—it's lots of fun and it makes a real difference in their reading and writing.'

Lessons are delivered four times a week for half an hour each day. The lessons support the work the children do in the classroom. The tutoring has been based on the Fountas Pinnell Levelled Literacy Intervention (LLI) program. Children practise reading every day and are provided with take home books which they keep.

'This program provides parents with the support and resources to reinforce children's learning at home.'

Children are encouraged to read with their parents and revisit the books they have read in their literacy sessions. 'Reading with your child every day is one of the best ways to support their education' Carolynne said, 'The more children read, the better they do at school.'

Good literacy skills are essential to improve education and life outcomes of Aboriginal young people. This program provides parents with the support and resources to reinforce children's learning at home and has improved their engagement with schools and education providers. The program will continue until June 2015.



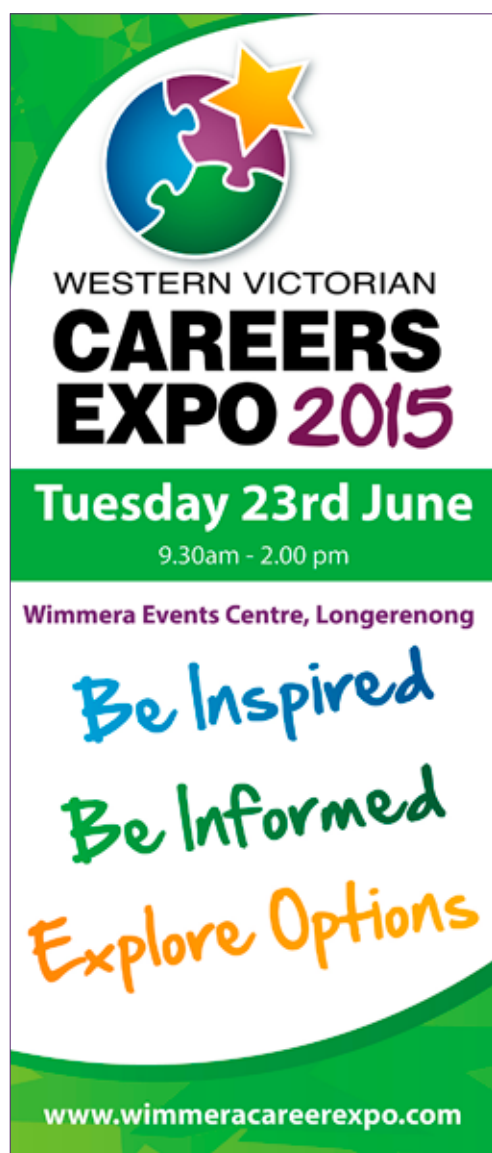
Western Victorian Careers Expo

Wimmera Southern Mallee LLEN has been a proud sponsor of the Western Victorian Careers Expo (formerly Wimmera and Southern Mallee Careers Expo) for many years. WSMMLLEN supports the Expo by providing office space for the Careers Expo coordinator as well as sponsorship and graphic design services.

The Western Victorian Careers Expo, hosted by the Wimmera and Southern Mallee Careers Association, is country Victoria's largest careers expo with 70 exhibitors plus 14 tertiary institutions represented. Since its inception in 1986, this premier regional event

has provided a one-stop-shop of vocational information to Western Victorian students, school leavers, job seekers, career changers, those returning to work and people considering further study or training. The Expo continues to grow with 22 schools participating from the Wimmera and Southern Mallee region and beyond and over 2,000 people attending in 2014.

A key feature of the expo is the extensive range of displays and the many hands-on demonstrations.



WESTERN VICTORIAN
**CAREERS
EXPO 2015**

Tuesday 23rd June
9.30am - 2.00 pm

Wimmera Events Centre, Longerenong

*Be Inspired
Be Informed
Explore Options*

www.wimmeracareerexpo.com



WESTERN VICTORIAN
**CAREERS
EXPO 2015**

Tuesday 23rd June
9.30am - 2.00 pm

Wimmera Events Centre, Longerenong

Job Seekers
Career Changers
Returning to Work
Students
Parents
Graduates
Further Study
Training

*Be Inspired
Be Informed
Explore Options*

www.wimmeracareerexpo.com



WESTERN VICTORIAN
**CAREERS
EXPO 2015**

Tuesday 23rd June
9.30am - 2.00 pm

Wimmera Events Centre, Longerenong

Opportunities
Career paths
Study options
Experience
Skills
Training

www.wimmeracareerexpo.com



Tuesday 23rd June, 9.30am - 2.00 pm
Wimmera Events Centre, Longerenong

WESTERN VICTORIAN
**CAREERS
EXPO 2015**

Federation University
has been a proud sponsor
and supporter of the
Western Victorian Careers
Expo since 1995

Federation
UNIVERSITY AUSTRALIA
2015 Major Sponsor

www.wimmeracareerexpo.com

Wimmera Southern Mallee LLEN provided in-house graphic design services for Western Victorian Careers Expo.

Western Victorian Careers Expo

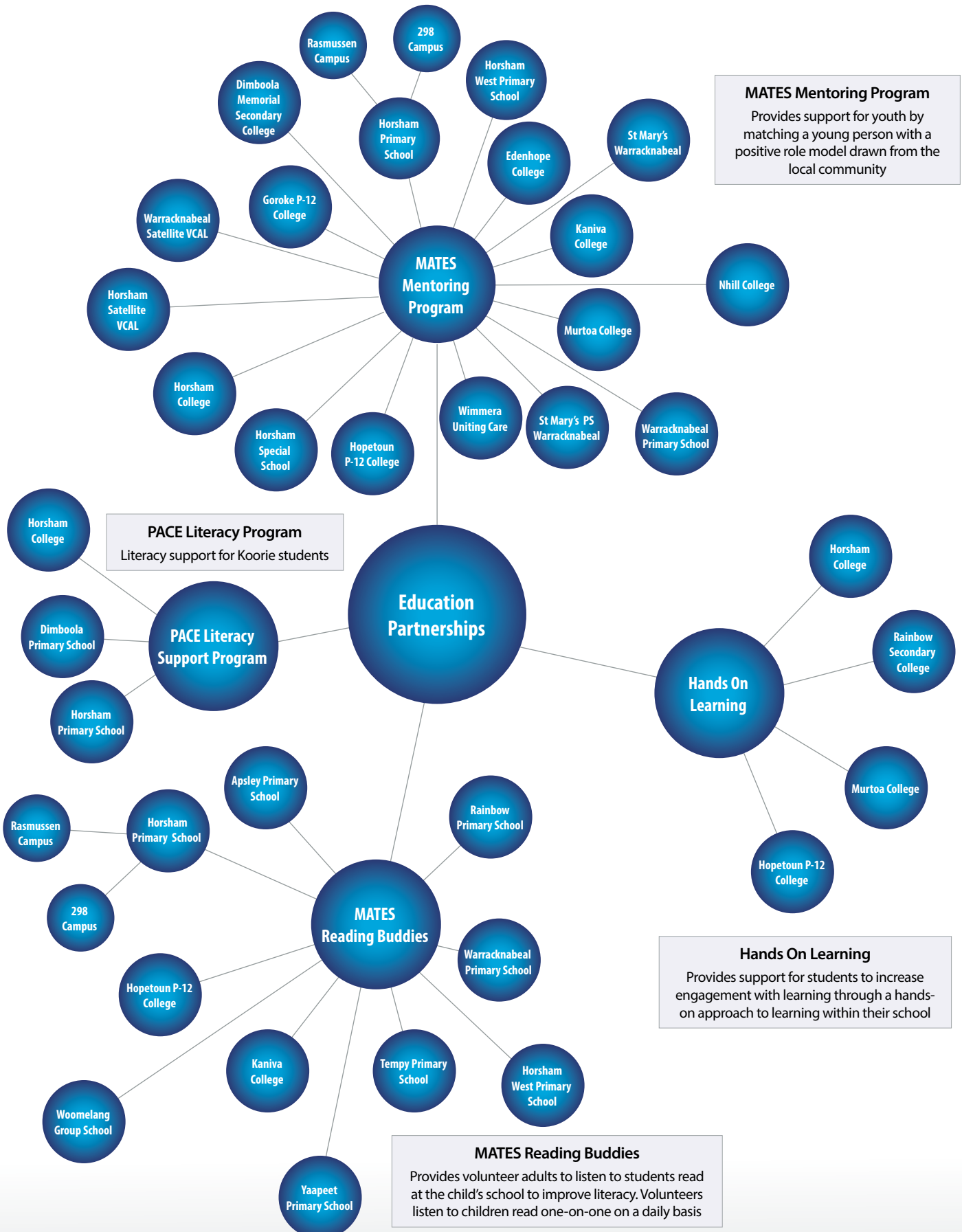


Academy of Interactive Entertainment exhibit at Western Victorian Careers Expo 2014

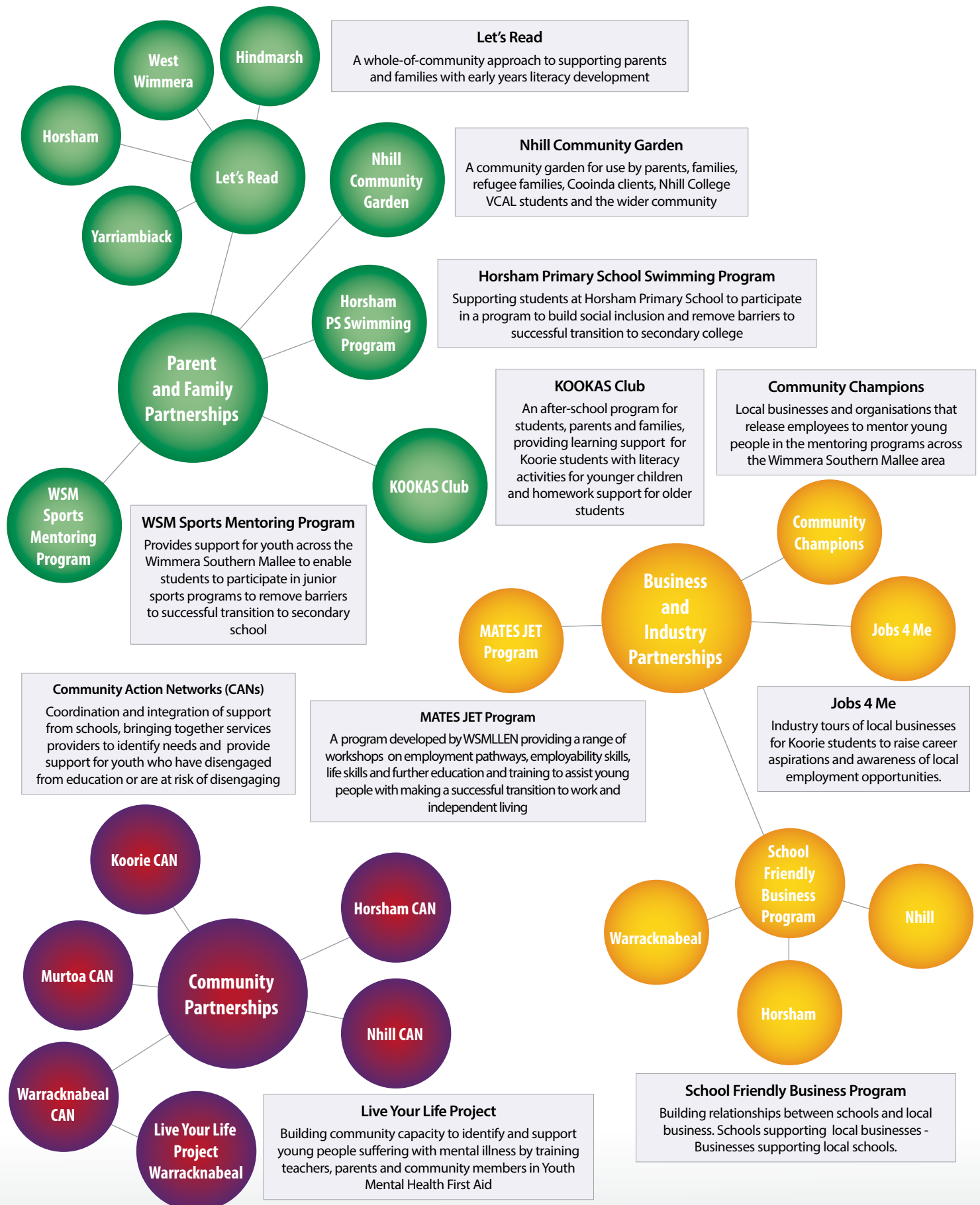


Federation University, Hair and Beauty exhibit at Western Victorian Careers Expo 2014

Partnerships brokered by WSMMLLEN



Partnerships brokered by WSMMLLEN



Program partners

Business and Industry partnerships

Community Champions	MATES JET Program		School Friendly Businesses Warracknabeal
ABC Radio	Connect Ed	Gypsy Willow	ANZ Warracknabeal
Advantage Pharmacy	Federation University	Horsham College	Belle-Vue trading Pty Ltd
Dimboola Pharmacy	Horsham CAN	Horsham Concrete Co Pty Ltd	Brian Clarke Vet Clinic
Edenhope and District Community Bank	Horsham College	Horsham Lighting and Decor	Cafe Pharmacino
GWM Water	Horsham Primary School 298 Campus	Horsham Mitre 10	Creekside Hotel
Hindmarsh Shire	Horsham Primary School Rasmussen Campus	Horsham Primary School 298 Campus	Dianne Marchment and Associates
Kaniva Bus Service	Horsham West Primary School	Horsham Primary School Rasmussen Campus	Fagan Auto
Landmark	Kaniva College	Horsham West Primary School	Feet First Footwear
Luv a Duck	Local Businesses	Jetset Travel Horsham	Jonasson's Kitchen Solutions
Morrow Motor Group	Nhill College	McDonalds Horsham	North West Real Estate
NAB	St Brigid's College	Petstock Horsham	O'Connors Case IH, Warracknabeal
Regional Schools Outreach Program	The Reach Foundation	Rockin Robin's Food Bar	Presh Beauty
Rural Northwest Health	Warracknabeal College	Sportfirst Horsham	Rural Northwest Health
Saxton Rural	Wimmera HUB	Ss Michael & St John's Primary School	SP & AJ Cox Automotive
TFW Engineering	Wimmera Uniting Care	St Brigid's College	St Mary's Primary School Warracknabeal
Tyler's Hardware	Workco	Surf One	Warrack Home Timber and Hardware
West Wimmera Shire	Youth Connections	Toyworld Horsham/Just Juniors	Warrack Hot Bread
Wimmera Foot Clinic	School Friendly Business Program Dimboola	Wimmera Foot & Ankle Clinic	Warracknabeal CAN
Wimmera Health Care Group	Clever Stitch	Wimmera HUB	Warracknabeal Herald and Northwest Press
Wimmera HUB	School Friendly Business Program Edenhope	Wimmera Office Equipment	Warracknabeal Neighbourhood House
Wimmera Information Network	Edenhope & District Memorial Hospital	Wimmera Uniting Care	Warracknabeal Pharmacy
Wimmera PCP	School Friendly Business Program Rainbow	School Friendly Business Program Nhill	Warracknabeal Preschool
Wimmera Southern Mallee LLEN	Rainbow Learning Group and Neighbourhood House	Aherns Sherwell	Warracknabeal Primary School
Wimmera Uniting Care	School Friendly Business Program Horsham	Cambrelle's	Warracknabeal Secondary College
Jobs 4 Me	48 Hour Websites	Dave's Auto Electrics	Werrigar Roadhouse
Horsham College	Across Events Management	Dunlop Super Dealer Nhill	Wilken Grain
Horsham Primary School 298 Campus	Axis Employment	Earthly Treasures	Woodbine Inc
Horsham Primary School Rasmussen Campus	Bendigo Bank Horsham	Halfway Motors	Yarriambiack Shire Council
Local Businesses	Bloomin Buds	Hindmarsh Shire	
St Brigid's College	Business Horsham	Jenifer Meek Giftware	
Horsham West Primary School	Cafe Jas	Jim's Butchery	
	Cheap as Chips	Meeky's Tyre Clinic	
	D'Coco Hair Studio	Nhill Free Press & Kaniva Times	
	Exchange Hotel	Nhill Pure Indulgence	
	Fig Tree Cafe	Robins Ag Service	
		Westprint Heritage Maps	

Program partners

Community partnerships

Edenhope CAN

Edenhope College
Edenhope and District Memorial Hospital
Victoria Police
Wimmera Uniting Care
West Wimmera Shire

Horsham CAN

Community Axis
Community Members
Connect Ed
DEECD
DEEWR
Department of Human Services
Federation University
Horsham College
Horsham Rural City Council
Nexus Youth Centre
Red Cross
Ss Michael & St John's Primary School
Victoria Police
Volunteering Western Victoria
Wimmera HUB
Wimmera Uniting Care
Youth Connections

Koorie CAN

Community Members
Connect Ed
DEECD
DEEWR
Delkaia Best Start Program

Department of Human Services
Federation University
Goolum Goolum Aboriginal Cooperative
Horsham College
Horsham Primary School 298 Campus
Horsham Primary School Rasmussen Campus
Horsham Rural City Council
Horsham West Primary School
LAECG
Local Indigenous Network
PACE Program
Wurreker Broker (VAEI)
Victoria Police
Volunteering Western Victoria
Wimmera Uniting Care
Youth Connections

Murtoa CAN

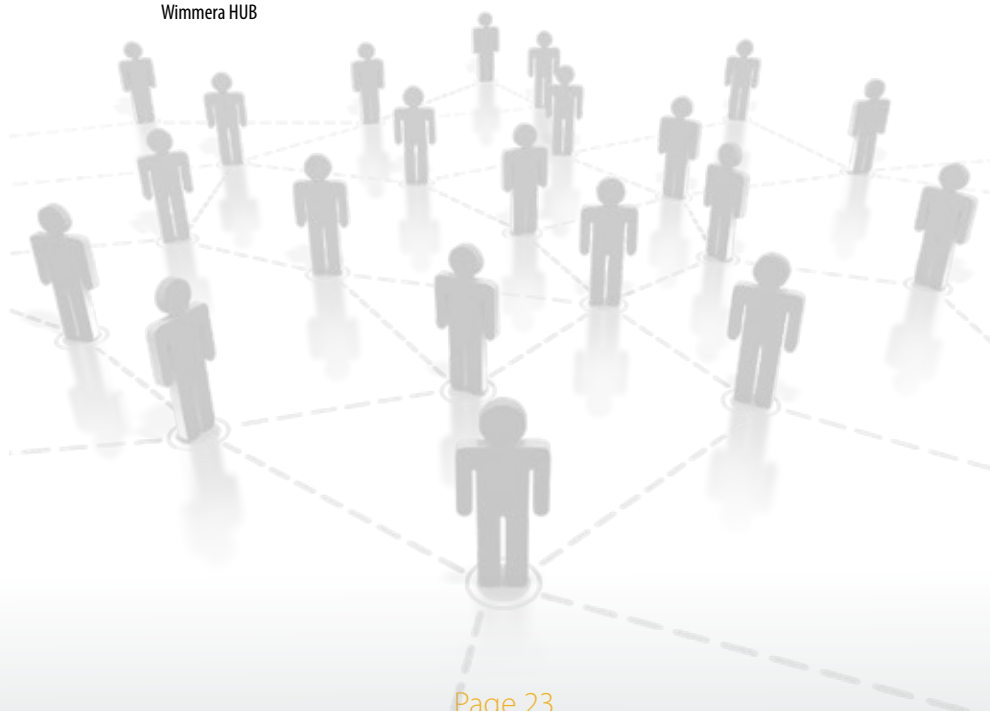
Rupanyup and Minyip Community Bank
Community Members
DEECD
DEEWR
Department of Human Services
Dunmunkle Health
Federation University
Local Businesses
Murtoa College
Murtoa Neighbourhood House
Victoria Police
Volunteering Western Victoria
Wimmera HUB

Wimmera Uniting Care
Yarriambiack Shire Council
Youth Connections
Nhill CAN
Community Axis
Community Members
DEECD
DEEWR
Department of Human Services
Federation University
Hindmarsh Shire
Nhill College
Nhill Neighbourhood House
Victoria Police
Volunteering Western Victoria
Wimmera HUB
Wimmera Uniting Care
Youth Connections

Warracknabeal CAN

Community Members
DEECD
Department of Human Services
Federation University
Grampians Community Health
Local Businesses
Neighbourhood House
Rural Northwest Health
Volunteering Western Victoria
Warracknabeal Satellite VCAL

Warracknabeal Secondary College
Wimmera HUB
Wimmera Uniting Care
Yarriambiack Shire Council
Youth Connections
Warracknabeal Live Your Life Project
Ballarat Health Services
Community Members
DEECD
Grampians Community Health
Hopetoun College
Murtoa College
Rural Northwest Health
Warracknabeal Herald
Warracknabeal Secondary College
Wimmera Uniting Care
Yarriambiack Shire Council



Program partners

Education partnerships

MATES Mentoring Dimboola

Community Members
Dimboola Memorial Secondary College
Hindmarsh Shire
Local Businesses
Victorian Youth Mentoring Alliance

MATES Mentoring Edenhope College

Community Members
Edenhope P12 College
Local Businesses
Victorian Youth Mentoring Alliance

MATES Mentoring Goroke

Community Members
Goroke College
Victorian Youth Mentoring Alliance

MATES Mentoring Hopetoun

Community Members
Hopetoun College
Victorian Youth Mentoring Alliance

MATES Mentoring Horsham Satellite VCAL

Community Members
Horsham College
Horsham Community Action Network
Local Businesses
Victorian Youth Mentoring Alliance

MATES Mentoring Horsham College

Community Members
Horsham CAN
Horsham College
Local Businesses
Victorian Youth Mentoring Alliance

MATES Mentoring Horsham Special School

Community Members
Horsham CAN
Horsham College
Horsham Special School
Local Businesses
Victorian Youth Mentoring Alliance

MATES Mentoring HPS 298 Campus

Community Members
Horsham CAN
Horsham Primary School 298 Campus
Local Businesses
Victorian Youth Mentoring Alliance

MATES Mentoring HPS Rasmussen Campus

Community Members
Horsham CAN
Horsham Primary School Rasmussen Campus
Local Businesses
Victorian Youth Mentoring Alliance

MATES Mentoring Kaniva College

Community Members
Kaniva College
Victorian Youth Mentoring Alliance

MATES Mentoring Murtoa College

Community Members
Local Businesses
Murtoa College
Murtoa Community Action Network
Murtoa Neighbourhood House
Victorian Youth Mentoring Alliance

MATES Mentoring Nhill College

Community Members
Hindmarsh Shire
Local Businesses
Nhill College
Nhill Community Action Network
Victorian Youth Mentoring Alliance

MATES Mentoring St Mary's Warracknabeal

Community Members
Local Businesses
St Mary's Primary School Warracknabeal
Victorian Youth Mentoring Alliance
Warracknabeal CAN

MATES Mentoring Warracknabeal Primary School

Community Members
Local Businesses
Victorian Youth Mentoring Alliance
Warracknabeal CAN
Warracknabeal Primary School

MATES Mentoring Warracknabeal Satellite VCAL

Community Members
Victorian Youth Mentoring Alliance
Warracknabeal CAN
Warracknabeal College
Warracknabeal Neighbourhood House
Warracknabeal Satellite VCAL

MATES Mentoring Wimmera Uniting Care

Community Members
Victorian Youth Mentoring Alliance
Wimmera Uniting Care

MATES Reading Buddies Program Apsley PS

Apsley Primary School
Community Members

MATES Reading Buddies Hopetoun P-12 College

Community Members
Hopetoun College

MATES Reading Buddies Horsham West PS

Community Members
Horsham West Primary School

MATES Reading Buddies HPS 298 Campus

Community Members
Horsham CAN
Horsham Primary School 298 Campus

MATES Reading Buddies HPS Rasmussen Campus

Community Members
Horsham CAN
Horsham Primary School Rasmussen Campus

MATES Reading Buddies Kaniva College

Community Members
Kaniva College

MATES Reading Buddies Rainbow PS

Community Members
Rainbow Primary School

MATES Reading Buddies Tempy PS

Community Members
Tempy Primary School

MATES Reading Buddies Warracknabeal PS

Community Members
Warracknabeal Primary School

MATES Reading Buddies Woomelang Group School

Community Members
Woomelang Group School

MATES Reading Buddies Yaapeet PS

Community Members
Yaapeet Primary School

Hands On Learning Horsham College

Hands On Learning
Horsham College

Hands On Learning Murtoa College

Hands On Learning
Murtoa College

Hands On Learning Hopetoun College

Hands On Learning
Hopetoun College

Hands On Learning Rainbow

Hands On Learning
Rainbow Secondary College

Program partners

Parent and family partnerships

Horsham PS Swimming Program	Let's Read Horsham	Let's Read Yarriambiack	Nhill Community Garden
DEECD	DEECD	DEECD	Cooinda Disability Services
Horsham Primary School 298 Campus	Delkaia Best Start Program	Dunmunkle Health	Karen Community Group
Horsham Primary School Rasmussen Campus	Department of Human Services	Foundation for Rural and Regional Renewal	Local Businesses
Horsham Rural City Council	Goolum Goolum Aboriginal Cooperative	Hopetoun College	Nhill College
Parents and families	Horsham North Kindergarten	Yarriambiack Shire Council	Nhill Community Action Network
Wimmera Regional Sports Assembly	Horsham Primary School 298 Campus	Murdoch Children's Research Institute	Nhill Lutheran School
YMCA	Horsham Primary School Rasmussen Campus	Murtoa CAN	Nhill Neighbourhood House
KOOKAS Club	Horsham Rural City Council	Murtoa College	Parents and families
Delkaia Best Start Program	Horsham Special School	Neighbourhood House	West Wimmera Health Service
Goolum Goolum Aboriginal Cooperative	Horsham West Primary School	Parents and families	Wimmera Uniting Care
Horsham College	Murdoch Children's Research Institute	Royal Children's Hospital	WSM Sports Mentoring Program
Horsham Primary School 298 Campus	Noah's Ark Inc	Rural Northwest Health	Auskick Community Coordinators
Horsham Primary School Rasmussen Campus	Royal Children's Hospital	The Smith Family	Auskick Regional Coordinator
Horsham West Primary School	Scope Victoria	Warracknabeal CAN	Local sports clubs across the region
Koorie Community Action Network	Ss Michael & St John's Primary School	Warracknabeal Primary School	Netball Victoria
Local Aboriginal Education Consultative Group	The Smith Family	Warracknabeal Secondary College	Parents and families
Parents and families	Wimmera Development Association	Wimmera Regional Library Corporation	Primary schools across the region
Wimmera Regional Library Corporation	Wimmera Healthcare Group	Let's Read West Wimmera	Warracknabeal Special School
Let's Read Hindmarsh	Wimmera Regional Library Corporation	Edenhope College	Wimmera Hockey Association
DEECD	Wimmera Uniting Care	Foundation for Rural and Regional Renewal	Wimmera Regional Sports Assembly
Dimboola Memorial Secondary College	Workco	Goroke College	Parent and Community Engagement Program
Dimboola Primary School		Kaniva College	Delkaia Best Start (Wimmera Uniting Care)
Foundation for Rural and Regional Renewal		Murdoch Children's Research Institute	Department of Prime Minister and Cabinet
Hindmarsh Shire		Royal Children's Hospital	Goolum Goolum Aboriginal Cooperative
Murdoch Children's Research Institute		The Smith Family	Horsham College
Nhill CAN		West Wimmera Shire	Horsham Primary School
Nhill College		Wimmera Regional Library Corporation	Horsham Rural City Council
Nhill Lutheran School			Koorie Education Team (DEECD)
Nhill Neighbourhood House			Murdoch Children's Research Institute
Royal Children's Hospital			Pearson Education
St Patrick's Primary School Nhill			Royal Children's Hospital
The Smith Family			The Smith Family
West Wimmera Health Service			Wimmera Regional Library Corporation
Wimmera Regional Library Corporation			



WSMLLEN Members

1. Schools (19 Members)

Balmoral High School	Horsham College	Rainbow P-12 College
Beulah Primary School	Horsham Primary School Rasmussen Rd Campus	Rupanyup Primary School
Connect Ed	Horsham Special School	St. Brigid's Secondary College
Dimboola Memorial Secondary College	Kaniva College	Warracknabeal Secondary College
Edenhope College	Murtoa College	Warracknabeal Special School
Goroke P-12 College	Nhill College	Yaapeet Primary School
Hopetoun P12 College		

2. TAFE Institutes or Universities with TAFE Sector (2 Members)

Longerenong College	Federation University
---------------------	-----------------------

3. Adult community Education Organisations (7 Members)

Gateway BEET	Rainbow Community Learning Group	Warracknabeal Neighbourhood House and Learning Centre
Learning Information Network Kaniva	Murtoa and District Neighbourhood House	Wimmera HUB
Nhill Neighbourhood House Learning Centre Inc	SLAAM Inc	

4. Other Education and training organisations including private registered training organisations, universities and group training companies (2 Members)

Community Axis	Workco Ltd
----------------	------------

5. Trade Unions (1 Member)

Victoria Trades Hall Council

6. Employers, Peak employer organisations, regional employer organisations and employment agencies. (24 Members)

Allan and Trev's Workwear	Horsham Autoelectrical Services Pty Ltd	Simpson Personnel
Australian Industry Group	Horsham Real Estate	Stanford Enterprises
Beaurepaires Horsham	Horsham Regional Art Gallery	Toys Garden Restaurant
Dimboola Pharmacy	Horsham Rural City Council	Warracknabeal AMCAL Pharmacy
Edenhope Post Office	J & F May	Warracknabeal Herald - North West Press
Fashion & Fantasy	McLennan Smash Repairs	Western Electrical & Refrigeration P/L
Feet First Footwear	Morrow Motors	Wimmera Mail Times
GWM Water	O'Connors Case IH	Woodbine Inc
Hopetoun Courier	Robins Ag Service	

7. Local Government (4 Members)

Hindmarsh Shire	West Wimmera Shire Council
Horsham Rural City Council	Yarriambiack Shire Council

WSMLLEN Members

8. Other community agencies and organisations, Commonwealth and State Government departments, School Focussed Youth Service, Adult, community and Further Education regional councils, Regional Youth Councils, Area Consultative Committees, parent organisations. (17 Members)

Art is Festival	Horsham Police	Warracknabeal Memorial Kindergarten Inc
Department of Planning & Community Development	Leadership Wimmera	Wimmera Business Centre
Dept. Education, Early Childhood Development	NEXUS Youth Centre	Wimmera Development Association
Grampians Community Health Centre	Regional Development Victoria	Wimmera Primary Care Partnership
	St Laurence Employment	Wimmera Regional Sports Assembly
	Volunteering Western Victoria	Wimmera Uniting Care

9. Koorie Organisations (3 Members)

Barengi Gadjin Land Council Aboriginal	Goolum Goolum Aboriginal Cooperative	Local Aboriginal Education Consultative Group LAECG
----------------------------------------	--------------------------------------	-----------------------------------------------------

10. Community Members

John Ackland	John Glover	Robyn Murphy
Leigh Andressen	Barbara Hahs	Campbell Pallot
Kim Boulton	Gail Harradine	Gary Pilgrim
Steve Braybrook	Gary Jones	Sue Radford
Stephen Bruce	Serena Kereopa	Dianne Richards
Bev Buckley	Neil King	Joe Richardson
Margaret Burdett	Mandy Kirsopp	Murray Robinson
Russell Christie	Ross McFarlane	Graeme Sargent
David Crouch	William McGrath	Iain Sedgman
Jo Day	Bruce McInnes	Kylie Smith
Hugh Delahunty	Raelene Mitchell	Mandi Stewart
Louise Dower-Amor	Alan Montague	Margaret Stewart
Kim Drummond	Gloria Muldoon	Lyn Sudholz
Rob Gersch	Carmen Munro	Mark Zimmerman

Independent Audit Report

To the members of Wimmera Southern Mallee Local Learning and Employment Network

We have audited the accompanying financial report of Wimmera Southern Mallee Local Learning and Employment Network, which comprises the statement of financial position as at 31 December 2014, and the Income Statement for the year then ended, statement of changes in equity and statement of cash flows for the year then ended, notes comprising a summary of significant accounting policies and other explanatory information and the Committee of Management Declaration.

Committee of Management responsibility for the Financial Report

The Committee of Management of Wimmera Southern Mallee Local Learning and Employment Network are responsible for the preparation and fair presentation of the financial report in accordance with Australian Accounting Standards and Associations Incorporation Reform Act (Vic) 2012 and for such internal control as Committee of Management determine is necessary to enable the preparation and fair presentation of a financial report that are free from material misstatement, whether due to fraud or error.

Auditor's responsibility

Our responsibility is to express an opinion on the financial report based on our audit. We conducted our audit in accordance with Australian Auditing Standards. Those standards require that we comply with relevant ethical requirements relating to audit engagements and plan and perform the audit to obtain reasonable assurance about whether the financial report is free from material misstatement.

An audit involves performing procedures to obtain audit evidence about the amounts and disclosures in the financial report. The procedures selected depend on the auditor's judgement, including the assessment of the risks of material misstatement of the financial report whether due to fraud or error. In making those assessment, the auditor considers internal control relevant to the Associations preparation and fair presentation of the financial statements in order to design audit procedures that are appropriate in the circumstances, but not for the purpose of expressing an opinion on the effectiveness of the entity's internal control. An audit also includes evaluating the appropriateness of the accounting policies used and the reasonableness of accounting estimates made by Committee of Management, as well as evaluating the overall presentation of the financial report.

We believe that the audit evidence we have obtained is sufficient and appropriate to provide a basis for our audit opinion.

Independence

In conducting our audit, we have complied with the independence requirements of the Australian professional accounting bodies.



Horsham Office 44 Wilson Street Horsham Victoria 3400

ABN 40 876 591 185

Postal Address PO Box 118 Horsham Victoria 3402

Affiliations: Knights Accounting, 16 Cromie Street Rupanyup Victoria 3388

P 03 5382 3001 **F** 03 5381 1357 **E** mail@wattsprice.com.au **W** www.wattsprice.com.au

Liability limited by a
scheme approved
under Professional
Standards Legislation



Electronic publication of the audited financial report

It is our understanding that the Wimmera Southern Mallee Local Learning and Employment Network intends to electronically present the audited financial report and auditor's report on its internet website. Responsibility for the electronic presentation of the financial report on the Wimmera Southern Mallee Local Learning and Employment Network website is that of Committee of Management of the Wimmera Southern Mallee Local Learning and Employment Network. The security and controls over information on the website should be addressed by the Wimmera Southern Mallee Local Learning and Employment Network to maintain the integrity of the data presented. The examination of the controls over the electronic presentation of audited financial report(s) on the Wimmera Southern Mallee Local Learning and Employment Network website is beyond the scope of the audit of the financial report.

Opinion

In our opinion, the financial report of Wimmera Southern Mallee Local Learning and Employment Network presents fairly, in all material respects the Wimmera Southern Mallee Local Learning and Employment Network financial position as at 31 December 2014, and of its financial performance and its cash flows for the year then ended in accordance with Australian Accounting Standards and Associations Incorporation Reform Act (Vic) 2012.



BRIAN WATTS
Certified Practising Accountant

3 March 2015

Watts Price Accountants
44 Wilson Street
HORSHAM VIC 3400



Horsham Office 44 Wilson Street Horsham Victoria 3400

ABN 40 876 591 185

Postal Address PO Box 118 Horsham Victoria 3402

Affiliations: Knights Accounting, 16 Cromie Street Rupanyup Victoria 3388

P 03 5382 3001 **F** 03 5381 1357 **E** mail@wattsprice.com.au **W** www.wattsprice.com.au

Liability limited by a
scheme approved
under Professional
Standards Legislation



Statement of Profit and Loss

WIMMERA SOUTHERN MALLEE LOCAL LEARNING AND EMPLOYMENT NETWORK INC.

STATEMENT OF PROFIT AND LOSS

FOR THE YEAR ENDED 31 DECEMBER 2014

	2014	2013
	\$	\$
Revenue	511,449	454,410
Advertising and promotion expense	2,428	23,413
Depreciation and amortisation expense	11,018	13,882
Employee expenses	282,257	313,980
Employee provisions expense	15,200	(5,280)
Motor Vehicle expenses	9,385	11,769
Other expenses	60,694	89,429
Project expenses	71,238	53,623
Rental expense	11,393	19,369
Net current year surplus	47,836	(65,775)
Other comprehensive income	-	-
Total comprehensive income for the year	47,836	(65,775)
Net current year surplus attributable to members of the entity	47,836	(65,775)
Total comprehensive income attributable to members of the entity	47,836	(65,775)

Statement of Financial Position

WIMMERA SOUTHERN MALLEE LOCAL LEARNING AND EMPLOYMENT NETWORK INC.

STATEMENT OF FINANCIAL POSITION

AS AT 31 DECEMBER 2014

	2014	2013
	\$	\$
ASSETS		
CURRENT ASSETS		
Cash on hand	584,517	340,542
Accounts receivable and other debtors	45,173	45,929
Prepayments	4,158	5,059
TOTAL CURRENT ASSETS	<u>633,848</u>	<u>391,530</u>
NON-CURRENT ASSETS		
Property, Plant and Equipment	<u>35,284</u>	<u>41,118</u>
TOTAL NON-CURRENT ASSETS	<u>35,284</u>	<u>41,118</u>
TOTAL ASSETS	<u>669,132</u>	<u>432,648</u>
LIABILITIES		
CURRENT LIABILITIES		
Accounts payable and other payables	26,738	39,216
Provisions	21,977	21,444
Income received in advance	278,924	117,357
Current tax liabilities	<u>23,794</u>	<u>(566)</u>
TOTAL CURRENT LIABILITIES	<u>351,433</u>	<u>177,451</u>
NON-CURRENT LIABILITIES		
Provisions	<u>14,667</u>	<u>-</u>
TOTAL NON-CURRENT LIABILITIES	<u>14,667</u>	<u>-</u>
TOTAL LIABILITIES	<u>366,100</u>	<u>177,451</u>
NET ASSETS	<u>303,032</u>	<u>255,197</u>
EQUITY		
Retained surplus	<u>303,032</u>	<u>255,196</u>
TOTAL EQUITY	<u>303,032</u>	<u>255,196</u>

Statement of Changes in Equity

WIMMERA SOUTHERN MALLEE LOCAL LEARNING AND EMPLOYMENT NETWORK INC.

STATEMENT OF CHANGES IN EQUITY

FOR THE YEAR ENDED 31 DECEMBER 2014

	Retained Surplus 2014 \$	Retained Surplus 2013 \$
Balance at 1 January 2014	255,196	320,971
Comprehensive Income		
Net Surplus for the year	47,836	(65,775)
Total Comprehensive Income attributable to members of the entity	<u>47,836</u>	<u>(65,775)</u>
Balance at 31 December 2014	<u><u>303,032</u></u>	<u><u>255,196</u></u>

Statement of Cashflows

WIMMERA SOUTHERN MALLEE LOCAL LEARNING AND EMPLOYMENT NETWORK INC.

STATEMENT OF CASHFLOWS

FOR THE YEAR ENDED 31 DECEMBER 2014

	2014	2013
	\$	\$
CASHFLOW FROM OPERATING ACTIVITIES		
Grants (state) operating received	657,799	303,564
Donations received	-	-
Payments to suppliers and employees	(416,356)	(521,338)
Interest received	7,891	10,580
Net cash provided by operating activities	<u>249,334</u>	<u>(207,194)</u>
CASH FLOWS FROM INVESTING ACTIVITIES		
Proceeds from sale of property, plant and equipment	-	-
Purchase of property, plant and equipment	<u>5,359</u>	<u>3,321</u>
Net cash used in investing activities	<u>(5,359)</u>	<u>(3,321)</u>
CASH FLOWS FROM FINANCING ACTIVITIES		
Net increase/(decrease) in cash held	<u>243,975</u>	<u>(210,515)</u>
Cash on hand at beginning of financial year	<u>340,542</u>	<u>551,057</u>
Cash on hand at end of financial year	<u>584,517</u>	<u>340,542</u>

Statement by Committee of Management

In accordance with a resolution of the committee of Wimmera Southern Mallee Local Learning and Employment Network Inc., the members of the committee declare that the financial statements as set out:

- present a true and fair view of the financial position of Wimmera Southern Mallee Local Learning and Employment Network Inc. As at 31 December 2014 and its performance for the year ended on that date in accordance with Australian Accounting Standards (including Australian Accounting Interpretations) of the Australian Accounting Standards Board and requirements of the Associations Incorporation Reform Act (Vic) 2012; and
- at the date of this statement, there are reasonable grounds to believe that Wimmera Southern Mallee Local Learning and Employment Network Inc. will be able to pay its debts as and when they fall due.

The statement is signed for and on behalf of the committee by:

Chair:



Mandi Stewart

Chair's Name

Treasurer:



Carmen Munro

Treasurer's Name

Dated this 7th Day of April 2015.

