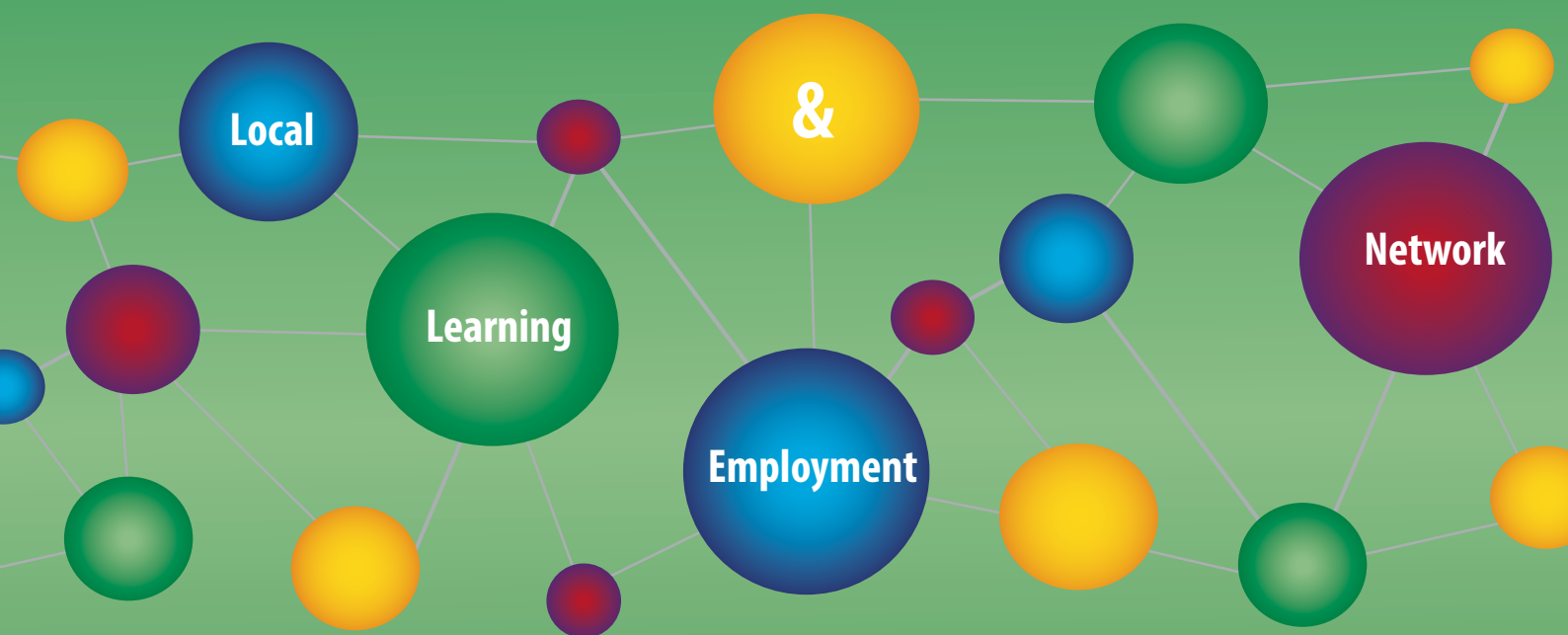


Annual Report 2016



WIMMERA
SOUTHERN
MALLEE
LLEN



Annual Report 2016

WIMMERA
SOUTHERN
MALLEE
LLEN





Contents

2016 – Year at a Glance	1
Chair & Executive Officer’s Report	2
Committee of Management	4
Staff	5
Our Service Region	8
Programs Established	9
Structured Workplace Learning	10
Support for Schools	14
VET Cluster Coordination	16
Partnerships	18
MATES Mentoring Program	22
Literacy Support	26
Awards	27
Partnerships Brokered by WSMMLLEN	28
Program Partners	30
WSMMLLEN Members	34
Financial Reports	36

Vision

The Wimmera Southern Mallee Local Learning and Employment Network’s objective is to assist young people to complete year 12 or its vocational equivalent. This includes traineeships and apprenticeships. A particular focus of our work is with young people from a disadvantaged background.

Mission

To create partnerships between industry, education and the community that develop positive futures for our young people.

Acknowledgements

WSMMLLEN acknowledges and thanks the following organisations and government departments for their funding support:

- Department of Education and Training
- Edenhope and District Memorial Hospital – Let’s Read
- Federation University – Let’s Read
- Foundation for Rural and Regional Renewal (FRRR) – Let’s Read
- Hindmarsh, Horsham, West Wimmera and Yarriambiack Shire Councils – Let’s Read
- Horsham Apex Club 15 – Let’s Read
- Horsham Sports and Community Club – Let’s Read
- Rupanyup and Minyip Community Bank – Let’s Read
- Wimmera Primary Care Partnership
- Wimmera Regional Sports Assembly – Wimmera Sports Mentoring Program
- Wimmera Southern Mallee VET Cluster – VET Coordination
- Wimmera Uniting Care – Let’s Read

2016 – Year at a Glance

132

The number of volunteers who have participated in the Reading Buddies Program since it began in 2012



405

The number of young people who have been matched with a mentor since the inception of the MATES Mentoring Program in 2010

mates
mentor assist target engage skills

649

The number of young people who have been sponsored by the Wimmera Regional Sports Assembly to participate in the Sports Mentoring Program since 2010



6

The number of Hands On Learning Programs established in Wimmera Schools to support students at risk of disengaging from education

HANDSON LEARNING

2000+

The number of young people who attended the Western Victorian Careers Expo in June, exploring career options



**WESTERN VICTORIAN
CAREERS
EXPO 2016**

128

The number of businesses registered with the School Friendly Business Program that are supporting local schools throughout the region.

**School
Friendly
Business**

100+

The number of pop-up libraries established in the community to provide access to books and to promote the importance of reading with young children



3,076

The number of Let's Read book bags that have been distributed to families across the Wimmera Southern Mallee since the programs began in 2014

LET'S READ
anywhere, anytime

293

The number of students from 15 schools across the region who attended Try VET Day in Horsham which resulted in 259 enrolments in 13 VET courses for 2017

**Try
VET**



Chair & Executive Officer's Report

Our young people – our future

The Wimmera Southern Mallee LLEN's mission is to create partnerships between industry, education and the community that develop positive futures for our young people. Our partnerships endeavour to connect and support young people to realise their potential and achieve their goals. A quality education for our young people is the foundation stone that underpins the future prosperity and well-being of our region.

Throughout 2016, the Wimmera Southern Mallee LLEN (WSMLLEN) and our partners intensified our focus on addressing some of the root causes of poor educational outcomes and disengagement from school. Our partnerships are established to help those young people who most need our assistance. We continue to work with families, schools and stakeholders to improve young people's literacy and education outcomes, increase social connection and strengthen school-community relationships. Our region faces significant challenges and these are best met by a young, enthusiastic and well educated future workforce.

Improving literacy is a key focus of our partnerships through programs such as Let's Read, Reading Buddies and Shake, Rattle and Read support for schools' literacy intervention programs. A significant part of our work is aimed at supporting and educating parents to play a significant role in their child's development and education.

Building social connection and social inclusion is another priority of our WSMLLEN partnerships. Exposing children and young people to positive role models is vital for their development. Our MATES mentoring program has been life changing for many young people. More than 400 community volunteers have mentored vulnerable young people since the inception of the program in 2010. Our thanks go to our wonderful MATES volunteer mentors for their contribution to their mentee's lives.

Our Community Action Networks (CANs) meet every term in seven communities to strengthen community support and relationships with our local schools. Any organisation or individual

with an interest in supporting our schools and our young people is welcome to attend. These networks continue to thrive with the active participation of schools, local government, health agencies, community organisations, training providers, government departments, Victoria Police and community members. The WSMLLEN also supports schools through the Wimmera Sports Mentoring program, six Hands on Learning programs, the School Friendly Business program, the Western Victorian Careers Expo, pop-up libraries, industry tours for students and teachers and coordination of the Vocational Education and Training (VET) cluster and the Grampians Virtual School.

Partnerships

We could not achieve our objectives without the support and contribution of many organisations and individuals. It is through the collaborative work of a wide range of our partners that enables us to make a difference in young lives. We would like to acknowledge and thank our region's schools, communities and partner organisations for their enthusiasm and contribution throughout 2016. We look forward to continuing to work closely with them to support the education of our young people.

The WSMLLEN has brokered more than 50 active partnerships aimed at improving the education and life outcomes of our young people. The WSMLLEN is also a member of 16 other partnerships and networks to enhance collaboration and support the achievement of our strategic goals.

Due to the support of our volunteers, partners and our staff, the WSMLLEN was a finalist in the state-wide Volunteering Victoria Impact Award and a finalist in the Not-for-Profit category of the Wimmera Development Association Business of the Year Award.

Financial

The WSMLLEN's financial operations are overseen by our Treasurer, Carmen Munro, and our Finance Committee. This group oversee our financial processes and examine the financial reports prior to every Committee of Management meeting. Our thanks go to the

members of the Finance Committee for their contribution. The WSMMLLEN had a successful year, achieving a net operating result of \$12,594 for 2016. The organisation maintains a strong balance sheet with \$407,508 of retained earnings (equity) at the end of 2016.

The WSMMLLEN appreciates the support of the Department of Education and Training (DET) for the funding of the LLEN and Structured Workplace Learning (SWL) program. We are also fortunate to receive donations and sponsorships for local partnerships and programs such as Let's Read. Our income is also supplemented by coordinating the Vocational Education and Training (VET) cluster and the Grampians Virtual School for schools across the region.

Committee of Management

On behalf of our members, stakeholders and young people we acknowledge and thank our committee for their valuable contribution to the WSMMLLEN. This group of highly skilled and passionate professionals volunteer their time and expertise to improve the lives of young people throughout the region. The Committee of Management provides the organisation with excellent governance, guidance and strategic direction. The committee worked with stakeholders to develop a new strategic plan (2016-2020) to ensure our efforts continue to support improving the education outcomes of young people across the Wimmera Southern Mallee.

We would like to acknowledge and thank Peter Gutteridge (2006-2016) and Alistair Houston (2014-2016) for their service and valuable contribution to the Committee of Management.



Mandi Stewart
Chair

Staff

Our thanks go to the WSMMLLEN staff for their contribution throughout the year. We are fortunate to have a passionate and skilled team committed to making a difference. We frequently receive very positive feedback about our team and the work they do. Our talented team throughout 2016 included Lorraine Merton, Joy Forbes, Melissa Powell, Mary Bysouth and Kerry Prouse (Finance Officer).

Acknowledgements

We acknowledge and thank the Victorian Government and the Department of Education and Training for their continued support. Thank you to Brendan Ryan, Joanna Day and DET staff at the Horsham and Ballarat regional offices. Our thanks, also, to the DET team at the Vulnerable Children Branch and the Secondary Reform, Transitions and Priority Cohorts Division for their ongoing support and guidance.

The following annual report will provide a comprehensive account of our partnership work throughout 2016. We are indebted to all who have worked with us and supported us throughout the year. The Wimmera Southern Mallee is full of resilient people with big hearts who are quick to offer encouragement and lend a hand. A good education is the foundation of progress, sustainability and a better life. We are proud to work with our partners to build the foundation of a positive future for young people in our region.



Tim Shaw
Executive Officer

Committee of Management

Category 1: Schools

Dr Joanna Day – Principal, Nhill College (transferred to Community Member February 2016)

Anne Gawith - Principal, Dimboola Memorial Secondary College (commenced April 2016)

Peter Gutteridge – Principal, St. Brigid's College (resigned 20 October 2016)

Carlos Lopez – Assistant Principal, Horsham College

Category 2: TAFE Institutes or Universities with TAFE Sector

Geoffrey Lord – Head of Western Campus, Federation University

Category 3: Adult Community Education Organisations

Karen Fuller – Coordinator, Warracknabeal Neighbourhood House

Category 4: Other education and training organisations including private registered training organisations, universities and group training companies

Vacant

Category 5: Trade Unions

Vacant

Category 6: Employers, peak employer organisations, regional employer organisations and employment agencies

Peter Drummond – Manager, People and Culture, GWM Water

Category 7: Local Government

Ray Campling – Chief Executive Officer, Yarriambiack Shire

Wendy Robins – Councillor, Hindmarsh Shire (transferred to Community Member, December 2016)

Debra Nelson - Mayor, Hindmarsh Shire (commenced December 2016)

Category 8: Other community agencies and organisations, Commonwealth and State Government departments, School Focused Youth Service, Adult, Community and Further Education Regional Councils, Regional Youth Councils, Area Consultative Committees, parent organisations etc.

Alistair Houston - Manager, Residential Services, Wimmera Uniting Care (resigned August 2016)

Brendan Ryan – Secretary – Senior Education Improvement Leader, South Western Region, Department of Education and Training

Mandi Stewart – Chair - Wimmera Manager, Western District Area, Department of Health and Human Services

Wendy Sturgess – Chief Executive Officer, Wimmera Uniting Care (commenced September 2016)

Category 9: Koorie organisations, peak Koorie agencies and regional Koorie organisations

John Gorton – Community Services Manager, Goolum Goolum Aboriginal Cooperative

Category 10: Community Members

Carmen Munro – Treasurer - Accountant - Green Taylor Partners, Horsham

Staff



Tim Shaw
Executive Officer



Mary Bysouth
Project Officer



Lorraine Merton
Administration Officer



Melissa Powell
Project Officer,
Structured Workplace Learning



Joy Forbes
Partnership Broker



Kerry Prouse
Finance Officer

Wimmera Southern Mallee LLEN hosted two Structured Workplace Learning students in 2016:
Jaimee Evans
Elizabeth Lanotte

Strategic Plan 2016 - 2020

Background

The Wimmera Southern Mallee LLEN was established in 2002 to improve the retention of young people in education, increase the attainment rate of Year 12, or equivalent, (apprenticeships, traineeships) and to address disadvantage. The LLEN creates collaborative partnerships between schools, local business and industry, community groups and government departments to support vulnerable children and their families.


Process

The strategic plan for 2016 - 2020 was developed in a consultation process between the Wimmera Southern Mallee LLEN staff, Committee of Management, stakeholders and partners to clearly define the goals and objectives over the four-year period from 2016 - 2020.

Implementation

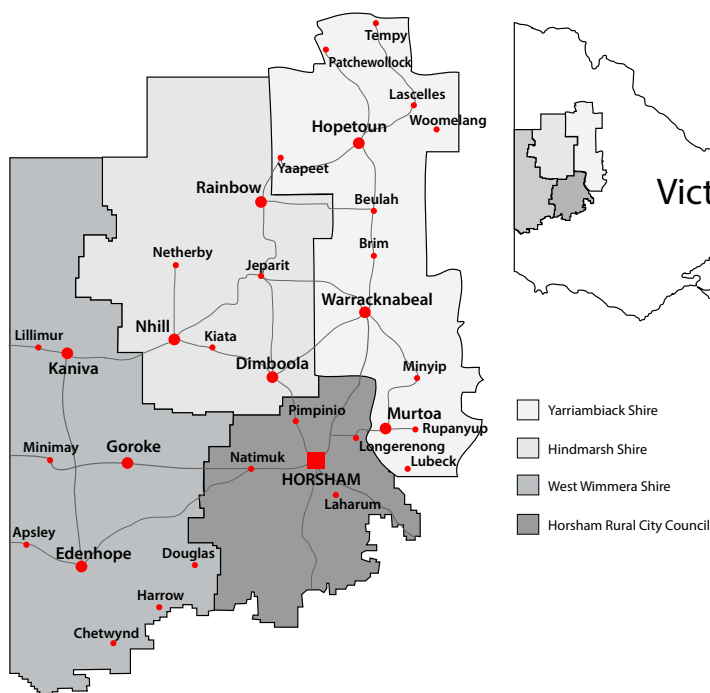
The Strategic Plan provides the framework for developing a work plan to ensure that the programs, activities and endeavours of Wimmera Southern Mallee LLEN address relevant issues that provide positive futures for young people in the Wimmera Southern Mallee region.

Strategic Plan 2016 - 2020

	OUR YOUNG PEOPLE	OUR PARTNERS	OUR WIMMERA SOUTHERN MALLEE LLEN
Our Goals	Goal 1 a. To improve the participation of vulnerable young people and their families in education b. To increase the re-engagement of young people into programs leading to credentials	Goal 2 To increase our schools' engagement with stakeholders in their community to improve students' aspirations, education and transition outcomes	Goal 3 To remain a sustainable, innovative and responsive organisation, focused on key outcomes
Objectives	To ensure that young people remain engaged in education, training or employment To provide support and opportunities to ensure that vulnerable young people achieve their full potential To improve literacy as a foundation for educational success	To build community capacity through our brokered and supported partnerships	To practise sound and responsible governance To ensure that the work of the LLEN will be responsive to needs and informed by evidence To ensure that the LLEN is financially sustainable
Strategies to be implemented	<ol style="list-style-type: none"> 1. Build on the work already underway to develop and improve early intervention literacy projects 2. Provide active coordination and support for the provision of flexible learning options 3. Support the delivery of the DET and DHHS plans (currently Marrung and Taskforce 1000) for improving Koorie education outcomes 4. Further develop the Wimmera Sports Mentoring Program to provide opportunities for vulnerable young people to participate in community and sports activities 5. Further develop a process and structure to facilitate effective advocacy for our community and its young people 	<ol style="list-style-type: none"> 1. Ensure the effectiveness of the Community Action Networks in strengthening relationships between schools and agencies working with 'at risk' young people and their families 2. Develop and implement a proactive industry engagement plan, and review the effectiveness of the plan on an annual basis 3. Maintain, support and develop the MATES mentoring program and document and celebrate its success 	<ol style="list-style-type: none"> 1. Develop and implement a communication/marketing plan which communicates the unique value and purpose of the LLEN to all partners and to the general community 2. Undertake a review of the governance structures and processes of the LLEN, including composition, succession planning and options to include a voice of youth within the governance structure and processes 3. Develop a data-bank of locally derived data, case studies, research data and impact data to support informed decision making by the LLEN and partner agencies 4. Actively seek alternative revenue sources and funding models to support program development and delivery. Actively monitor a 3-year financial plan, to ensure that the LLEN is well-placed to make financially responsible decisions at the end of the current government funding cycle.

Creating partnerships between industry, education and the community that develop positive futures for our young people

Our Service Region



Schools in our service region

Yarriambiack Shire Schools 14 Schools

1. Beulah Primary School
2. Hopetoun P-12 College
3. Minyip Primary School
4. Murtoa College
5. Our Lady Help of Christians School (Murtoa)
6. Rupanyup Primary School
7. St Jospeh's Primary School (Hopetoun)
8. St Mary's Primary School (Warracknabeal)
9. Tempy Primary School
10. Warracknabeal Secondary College
11. Warracknabeal Primary School
12. Warracknabeal Special Development School
13. Woomelang Group School (Primary)
14. Yaapeet Primary School

Hindmarsh Shire Schools 8 Schools

1. Dimboola Primary School
2. Dimboola Memorial Secondary College
3. Jeparit Primary School
4. Nhill College
5. Nhill Lutheran School
6. Rainbow P-12 College
7. St Patrick's School (Nhill)
8. St Peter's Lutheran School (Dimboola)

West Wimmera Shire Schools 5 Schools

1. Apsley Primary School
2. Edenhope College
3. Goroke P-12 College
4. Kaniva College
5. St Malachy's Primary School (Edenhope)

Horsham Rural City Schools 9 Schools

1. Holy Trinity Lutheran School (Horsham)
2. Horsham Secondary College
3. Horsham Primary School
4. Horsham Special School
5. Horsham West – Haven Primary School
6. Laharum Primary School
7. Natimuk Primary School
8. St Brigid's College
9. Ss Michael and John's Catholic Primary School (Horsham)

Programs Established

The Wimmera Southern Mallee LLEN service area covers 28,000 square kilometres across the four shires of West Wimmera, Yarriambiack, Hindmarsh and Horsham Rural City Council.

Programs established and/or supported by Wimmera Southern Mallee LLEN in local areas include:

Hindmarsh Shire

Nhill

MATES Mentoring Program
MATES Community Champions
Nhill Community Garden
Nhill Community Action Network
School Friendly Business Program
Ready Set Read (Nhill College)
Let's Read
MATES Reading Buddies Program
Nhill Lutheran School
WSM Sports Mentoring Program
Nhill College
Nhill Lutheran School
St Patrick's Primary School

Dimboola

MATES Mentoring Program
MATES Community Champions
Let's Read
WSM Sports Mentoring Program
Dimboola Memorial Sec. College
Dimboola Primary School
Dimboola Community Action Network

Jeparit

Let's Read
WSM Sports Mentoring Program

Rainbow

MATES Reading Buddies Program
Let's Read
Hands On Learning
Rainbow P-12 College Breakfast Club
Shake Rattle and Read
WSM Sports Mentoring Program

West Wimmera Shire

Kaniva

MATES Mentoring Program
MATES Reading Buddies Program
MATES Community Champions
WSM Sports Mentoring Program
Let's Read

Goroke

MATES Mentoring Program
Let's Read
WSM Sports Mentoring Program

Edenhope

MATES Mentoring Program
Let's Read
Edenhope Community Action Network
MATES Reading Buddies Program
School Friendly Business Program
Hands On Learning
WSM Sports Mentoring Program
Edenhope College
St Malachy's School

Apsley

MATES Reading Buddies Program
WSM Sports Mentoring Program

Yarriambiack Shire

Beulah

WSM Sports Mentoring Program

Hopetoun

MATES Mentoring Program
Hands On Learning
Live Your Life Project
Shake Rattle and Read
WSM Sports Mentoring Program

Minyip

WSM Sports Mentoring Program

Murtoa

MATES Mentoring Program
Murtoa Community Action Network
Let's Read
Hands On Learning

Tempy

MATES Reading Buddies Program

Warracknabeal

MATES Mentoring Program
Warracknabeal Secondary College
Warracknabeal Primary School
St Mary's Primary School
MATES Reading Buddies Program
Warracknabeal Primary School
St Mary's Primary School
MATES Community Champions
WSM Sports Mentoring Program
St Mary's Primary School
Warracknabeal Kindergarten
Warracknabeal Primary School
Warracknabeal Special School
Warracknabeal Community Action Network
Let's Read
School Friendly Business Program
Shake Rattle and Read
Hands On Learning
WORDS Program
Woomelang
MATES Reading Buddies Program
Yaapeet
MATES Reading Buddies Program
WSM Sports Mentoring Program

Horsham Rural City

Horsham

MATES Mentoring Program:
Horsham College
Ss Michael and John's Primary School
Horsham Special School
Horsham Primary School
Horsham West Primary School
MATES Reading Buddies:
Horsham Primary School
Ss Michael & St John's Catholic Primary School
Horsham West Primary School
MATES Community Champions
WSM Sports Mentoring Program
Horsham Primary School
Horsham Special Development School
Laharum Primary School
Natimuk Primary School
Ss Michael & St John's Catholic Primary School
Koorie Kids After School (KOOKAS) Club
Horsham Community Action Network
Koorie Community Action Network
School Friendly Business Program
Horsham Primary School Swimming Program
Hands On Learning
Let's Read
Jobs4Me

Structured Workplace Learning

Structured Workplace Learning

In 2016 Victoria's 31 Local Learning and Employment Networks (LLENs) were funded to coordinate Structured Workplace Learning (SWL) opportunities for school students undertaking vocational education and training (VET) programs including School-based Apprenticeships and Traineeships (SBATs), as part of their Victorian Certificate of Education (VCE) or Victorian Certificate of Applied Learning (VCAL). This initiative replaced the former Workplace Learning Coordinators Program.

Structured Workplace Learning is on-the-job training that allows students to develop their work skills and understand employer expectations. SWL is available to Victorian school students undertaking a VET program as part of their VCE or VCAL studies, including School-based Apprenticeships and Traineeships (SBATs).

SWL Online Portal

The Structured Workplace Learning online portal was launched in May 2016. The portal lists opportunities for VET and VCAL students to search and arrange work placements that align with their studies.

The SWL state-wide portal will increase access to local and state-wide work placements. The new approach to SWL is part of a suite of Education State initiatives to support young people in their education and training.

WSMLLEN project officers approached businesses right across the four shires, asking employers to commit to giving students experience and knowledge in their industries. From May until 31 December, 58 host employers offered 66 placement opportunities. Twenty six of these placements were taken up before the end of the year with 40 placement opportunities available for students to access in the new year.

Training was offered to schools right around the region to train teachers and students on how to use the portal to search for opportunities and secure work placements. Schools that took up this offer were:

- Horsham College
- Dimboola Memorial Secondary College
- Rainbow P-12 College
- Hopetoun P-12 College
- Nhill College
- Warracknabeal Secondary College.

Work Placements

With increasing numbers of students seeking work placements, schools rely on local businesses to provide this vital component of the education of our young people. One of the benefits for businesses offering a work placement is that they have a no-obligation opportunity to find potential employees for their business.

Addressing Skill Shortages

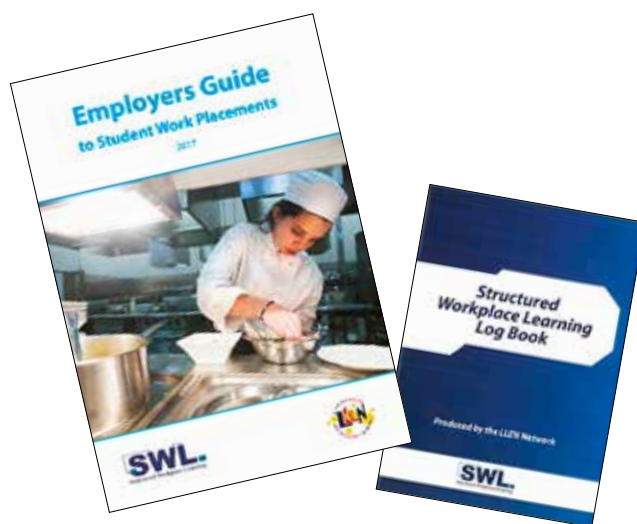
A focus of the Structured Workplace Learning program is to identify skills shortage areas in the local region and to assist with facilitating appropriate pathways for local young people to fill the skills shortages.

Employers Guide

To support employers who host a student for a work placement, the SWL program published an Employers Guide to Student Work Placements. First published in 2013, this was revised and reprinted for distribution in 2017 to assist employers with their compliance to host employer requirements and responsibilities and to provide high quality placements to students.

Student Log Books

The SWL program also provides log books to assist students to record the details of their placement and to increase their engagement within the workplace. Log books are provided to schools in the Wimmera Southern Mallee region, free of charge.



Structured Workplace Learning



Eddie Nsanzimana, on work placement at Nexus Youth Centre

From Structured Workplace Learning to a Traineeship

Eddie spent his childhood in a refugee camp in Tanzania after being forced to flee from the Rwandan genocide in the mid 90's, before moving to Australia in 2006 with his mother and siblings. Eddie found a career pathway at Nexus Youth Centre in Horsham.

Eddie first heard about Nexus at the Western Victorian Careers Expo and commenced a Structured Workplace Learning placement in Community Services at Nexus. He worked at Nexus as part of his schooling every Tuesday from mid 2014 until the end of 2015.

After completing year 12, Eddie moved into a full-time traineeship undertaking a Certificate IV in Community Services at Nexus in 2016.

Eddie's manager had only good things to say about him. 'Eddie's been fantastic. He connects really well with the young people. I think it's really good having a young person on the staff in a training capacity. Work placements are a great opportunity to invest in a young person's life and they bring a fresh dynamic to your organisation. As a youth centre, it's good to be involved with young people who are starting to transition from education to employment. It's exciting to have someone like Eddie on board—he's dynamic and enthusiastic'.

Structured Workplace Learning



School Based Apprentice, Hope Dempsy on placement at Woodbine in Warracknabeal

School-based Apprenticeship

Warracknabeal year 11 student, Hope Dempsy took up a School-based Apprenticeship opportunity at Woodbine in Warracknabeal. School-based Apprenticeships allow young Australians to get a head start with their careers by beginning an apprenticeship while still working towards their senior secondary school certificate. School-based Apprenticeships are a great career option, allowing young Australians to commence training for a vocational qualification and earn a wage while still at school.

The School-based Apprenticeship is part of Woodbine's trainee program. The program involves the nomination by a secondary

college of a year 12 student who does not plan to continue on to tertiary studies. This trainee is supported in real full-time employment for two years whilst obtaining a Certificate IV in Disability.

Students who participate in Structured Workplace Learning are sometimes offered a School-based Apprenticeship by the employer who hosts them for their work placement. In this situation, the employer can gauge the suitability of the student for their business and the student can determine whether or not they would like to work in that particular industry.

Structured Workplace Learning



Warracknabeal Secondary College student, Shannon Jeffrey, on work placement at D'Coco Hair Studio

Structured Workplace Learning to full-time apprenticeship

Shannon Jeffrey commenced a Structured Workplace Learning placement at D'Coco Hair Studio in Horsham while undertaking year 11 at Warracknabeal Secondary College. With the support of family and friends, she was able to arrange transport to travel from Warracknabeal to Horsham one day a week for her work placement.

Shannon was only a few weeks into her work placement when she was offered a School-based Apprenticeship, which she started in April. Shannon took up this apprenticeship while continuing her

studies at Warracknabeal Secondary College. Within six months, a permanent position became available so Shannon enrolled at the Gordon Institute in Geelong to complete the trade school element of her apprenticeship.

Shannon highly recommends Structured Workplace Learning to get out into the workforce and try different trades and skills. For Shannon, this led to a full-time apprenticeship.

University was not the pathway Shannon wanted to follow, so she was thrilled to find this pathway into her chosen career,

Support for Schools



Horsham Colleges students participating in the More Than Gumboots and Tractors tour of Grains Pathology Lab at Grains Innovation Park

More Than Gumboots and Tractors for Teachers

Wimmera teachers and careers advisors gained a lesson in the huge range of opportunities on offer in the grains sector as part of a workshop to boost the number of students choosing agriculture as their career.

The Grains Research & Development Corporation (GRDC) ran the professional development workshop, More than Gumboots and Tractors, to up-skill teachers and career advisors on careers in the Victorian grains industry.

This project aims to address a large skills concern for the grains industry. The workforce of tomorrow for the grains industry starts with today's secondary college students so it is important that those who help advise and steer students' careers, are equipped with the right information.

AgCommunicators conducted a poll of more than 50 South Australian teacher and career advisor's perceptions of the grains industry. The poll found that over 50% of careers advisors had little or fair knowledge of career pathways into agriculture. There were

also concerns raised that they did not understand the range of opportunities and so were not confident giving advice to students.

There is the perception that a career in agriculture simply means farming. Work is needed to dispel this myth and profile the broad range of careers from research to agronomy, food science to grain marketing and logistics to communication.

Twenty teachers attended the workshop in Horsham which took them on a tour through research centres, grain quality labs and bulk handling sites. The day concluded with a careers dinner where teachers met with people directly employed in the grains industry.

Teachers and career advisors created links with industry organisations for teaching and learning inspiration and discovered learning pathways into food science and grains careers. Participants were also provided with a certificate of attendance to contribute towards their annual professional development requirements.

The day was initiated and facilitated by a partnership between Wimmera Development Association, WSMILEN, Grains Research Development Association and AgCommunicators.

Support for Schools

More Than Gumboots and Tractors for Students

Following on from the successful More Than Gumboots and Tractors tour for teachers, year 9 and 10 science students were treated to a feast of potential career opportunities with a tour of Grains Innovation Park, Longerenong College and Bayer Cropsience. Sessions gave students a snapshot into Agricultural Science related careers and exposed them to a number of leading research and development facilities based in Horsham.

Coinciding with Science week, 62 students from Horsham College, St Brigid's and Dimboola Memorial Secondary College visited five different sites including the Australian Grains Genebank, Victorian Phenotyping Glasshouse and Grains Pathology Laboratories and Bayer Cropsience's wheat and canola breeding centre at Longerenong College.

The day was a collaboration between Wimmera Development Association and WSMMLLEN, supported with a travel subsidy through the Victorian Wheat Research Foundation.

Alternate Pathway Students

The Wimmera Southern Mallee LLEN facilitated 11 industry tours, two employability events, one community project and five work experience opportunities for Horsham College Connect Ed and Satellite VCAL students. Two students from SVCAL have undertaken Structured Workplace Learning at WSMMLLEN and another two students used the SWL portal to obtain their work placements.

In addition, WSMMLLEN provided information and initiated contact with the Green Army, CPR training, CIC White Card training and MADEC's short courses. Four students registered to attend the Try VET Day resulting in one Connect Ed student enrolling in a VET Automotive Course.

WSMMLLEN has arranged industry tours for the Horsham College Alternate Pathways Program students. These tours have been a walk through and discussion in different local businesses.

WSMMLLEN would like to thank the following businesses for giving their time freely to talk with the students:

- Sirs and Hers Hair Studio
- Millers Contractors
- McDonalds Horsham
- Bunnings Horsham
- Woolworths Horsham
- Membrey Auto Wreckers.

Industry Taste Testers

A taste-tester program was designed for four students from Horsham College Alternate Pathways Program in 2016 to try half-a-day work experience in five different industries. One student at time went to a different employer each week for five weeks from 10 am-2 pm to learn about the industry and the duties relevant to specific jobs. The following businesses assisted in this program and we appreciate their support:

- Genes Bank – Grains research
- Horsham RSL – Hospitality
- Wimmera Aquatrail – Gardening, soil, paving, pipes and plants
- Horsham YMCA – Fitness and Lifeguarding
- Wilson Bolton – Mechanics.

Virtual School Coordination

Wimmera Southern Mallee LLEN coordinates the Grampians Virtual School. The Virtual School allows students in remote schools to undertake VCE subjects via video conferencing from another school in the region, which are not available at their own school. Participating schools deliver subjects to other schools in exchange for receiving subjects which they are unable to staff. This extends the range of subjects on offer to students in smaller remote schools.

Western Victorian Careers Expo

The Western Victorian Careers Expo, hosted by the Wimmera and Southern Mallee Careers Association (WASM), is country Victoria's largest careers expo. Since its inception in 1986, this premier regional event has provided a one-stop-shop of vocational information to Western Victorian students, school leavers, job seekers, career changers, those returning to work and people considering further study or training.

The Western Victorian Careers Expo is organised by a sub-committee of the Wimmera and Southern Mallee Careers Association. The organising committee includes members of the Association, as well as representatives from Wimmera Southern Mallee LLEN, Department of Education and Training, Federation University, Skillinvest, Wimmera Events Centre, Wimmera Development Association and the Tertiary Information Service.

Wimmera Southern Mallee LLEN provides sponsorship for the Expo as well as office space and graphic design support for the Careers Expo Project Officer.



VET Cluster Coordination



Apple Roses prepared by Hospitality students at the 2016 VET Induction Day

VET Cluster Coordination

VET Cluster Coordination

The Wimmera Southern Mallee LLEN continued coordination of the Vocational Education and Training (VET) cluster in 2016. Across the Wimmera and Southern Mallee, fourteen schools are actively involved in the cluster allowing a broad range of subjects to be delivered by Registered Training Organisations (RTOs). Courses are delivered at five venues in Horsham: Federation University, Skillinvest, Longerenong College, Centre for Participation and Horsham College. Each school's VET Coordinator participates in regular cluster meetings, giving valuable input into the planning and support of the VET in Schools (VETiS) program each year. In addition to the courses offered in Horsham, some schools offer their own VETiS courses. With solid relationships between the cluster members, students can also access these courses locally, minimising their travel time.

The VET Cluster Coordinator is responsible for:

- Setting agendas and taking minutes at the cluster meetings,
- Providing information to stakeholders
- Liaising with schools, RTOs, and the Victorian Curriculum and Assessment Authority
- Coordination of Try VET Day and Induction Day
- Processing of enrolment and withdrawal forms
- Updating the VETiS Handbook with current information of the courses on offer
- Coordination of public buses travelling from as far as 120 km from Horsham
- Timetabling of the connecting buses to RTOs in Horsham.

Eighteen courses were offered for 2017. Try VET day was attended by 293 students from 15 schools which resulted in 259 enrolments for VET courses in 2017

VET Courses Delivered in 2016

Certificate II in Agriculture
Certificate II in Automotive Technology Studies
Certificate II in Building and Construction
Certificate III in Community Services
Certificate II in Dance
Certificate III in Community Dance, Theatre and Events (Performing Arts)
Certificate II in Electrotechnology (Career Start)
Certificate II in Engineering
Certificate II in Furniture Making
Certificate II in Hairdressing
Certificate II in Creative Industries (Media)
Certificate II in Kitchen Operations
Certificate II in Plumbing (Pre-apprenticeship)
Certificate II in Retail Makeup and Skincare
Certificate III in Sport and Recreation

VET Courses Offered for 2017

Certificate II in Agriculture
Certificate II in Automotive Technology Studies
Certificate II Building and Construction
Certificate II in Business*
Certificate II in Civil Construction*
Certificate II in Creative Industries (Media)
Certificate III in Community Services
Certificate II in Dance
Certificate III in Community Dance, Theatre and Events (Performing Arts)*
Certificate II in Electrotechnology (Career Start)
Certificate II Engineering
Certificate II in Furniture Making
Certificate II in Hospitality (Kitchen Operations)
Certificate II in Music*
Certificate II in Plumbing (Pre-apprenticeship)
Certificate II in Salon Assistant
Certificate III in Sport and Recreation
Certificate III in Visual Arts and Contemporary Crafts (Visual Arts)*

** Course did not run in 2017 due to insufficient enrolments*

Partnerships

Let's Read

The Wimmera Southern Mallee LLEN has established partnerships with local government, schools, kindergartens, playgroups, health providers, community groups and government departments to establish Let's Read in four Wimmera Southern Mallee shires. Let's Read tackles one of the root causes of lack of achievement and disengagement from school – low literacy. Poor literacy is associated with lower education, earnings and health outcomes, and high rates of unemployment, welfare dependence and teenage parenting.

Let's Read is an early years literacy program aimed at promoting the importance of reading with young children from birth to 5 years. Let's Read was developed by the Centre for Community Child Health at the Royal Children's Hospital Melbourne. The Wimmera Southern Mallee LLEN and local stakeholders have partnered with The Murdoch Children's Research Institute and The Smith Family to implement Let's Read in our region.

The program delivers support, books and resources to families at four different child age points. Families receive the resources and support for their babies at 4 months, 12 months, 18 months and 3½ years from Maternal and Child Health Nurses during the child's health check. The program distributed more than 3,000 Let's Read books and resources bags to families across the region since 2014.

This is a long term project which will deliver lifelong benefits for our region's children. Reading failure disproportionately affects children from socially disadvantaged homes which, in turn, contributes to a continuation of the poverty cycle. The gift of literacy provides our most vulnerable children with essential skills to achieve and succeed in their education. Low literacy condemns these children to a bleak future, with a strong probability that they will exit school early to a life of welfare.

The future prosperity and well-being of the Wimmera depends on having a skilled literate workforce. This program will make a significant impact on improving literacy rates and academic achievement. Let's Read provides local solutions to address poor education outcomes, disengagement from school and welfare dependency through improving literacy and academic achievement.

Our thanks go to all of our Let's Read partners, especially our wonderful Maternal and Child Health Nurses. We would like to thank and acknowledge our funding partners for 2016, including:

- Hindmarsh, Horsham, West Wimmera and Yarriambiack Shire Councils
- Edenhope and District Memorial Hospital
- Federation University
- Foundation for Rural and Regional Renewal (FRRR)

- Horsham Apex Club 15
- Horsham Sports and Community Club
- Rupanyup and Minyip Community Bank
- Wimmera Uniting Care



WSMLLEN Chair, Mandi Stewart, receives a donation for the Let's Read program from Hindmarsh Shire Councillor, Wendy Robins

Shake Rattle and Read

Wimmera Southern Mallee LLEN has supported schools across the region to raise awareness of the importance of literacy development in the preschool years. Shake Rattle and Read groups involve parents and preschool children in a range of activities such as singing and reading stories. School staff members or volunteers with experience in early years education run activity sessions which model ways to enhance the language development of preschool children.

Pop-up Libraries

Over 100 pop-up libraries have been established around the region to provide children's books in community spaces where families gather. These libraries are tubs of children's books located in waiting rooms, supermarkets, child care centres, playgroups, community service agencies and kindergartens. Wimmera Southern Mallee LLEN provides the library tubs and stickers for the books for community groups and schools to use to establish pop-up libraries. Some VCAL students in schools have set up pop-up libraries as a VCAL project. Students collect second-hand children's books through book drives to fill the library tubs and then distribute them in their local community.

The aim of the pop-up library project is to increase the exposure of children to books, particularly for families who may not have books in their home or do not visit their local library.

Partnerships

The Wimmera Mallee Sports Mentoring Program

This successful partnership was first brokered by the WSMLLEN in 2010. Partners include the region's primary schools, the Wimmera Regional Sports Assembly, Auskick, netball and hockey coordinators, local sporting clubs, and the community.

The program enables children to participate in junior sports programs across the region. It is targeted at children who are not participating in sports due to their family's financial circumstances. More than 158 young people participated in the program in summers sports 2015/2016 and winter sports 2016. A total of 649 young people have participated in junior sports programs since its inception.

It is particularly pleasing to see children with a disability, Koorie children and children from migrant families participating in team sports with their peers.

The program increases their physical activity, promotes social inclusiveness, and increases the participants' connections with positive role models and the community. An increase in the engagement of families with their children's activities and their school is one of the many positive outcomes of this program.

Hands on Learning

The Hands On Learning program continues to grow in the Wimmera. The Wimmera Southern Mallee LLEN played a key role in bringing the program to our region and provided significant seed funding to schools to implement the program. There are now six schools delivering this effective program which engages 'at risk' students in Years 7-10. Students work one day a week on 'hands on' projects and four days in the classroom. The program

is delivered at Edenhope, Horsham and Murtoa Colleges, Rainbow and Hopetoun P-12 Colleges and Warracknabeal Secondary College. A feature of the Horsham College program is the participation of Horsham Special School students one day per week.

The Hands On Learning students have completed significant projects within their schools and also out in the community. Projects include town and main street beautification projects, construction of a large shed, extension and repair of school sprinkler systems, building of outdoor seats and tables, landscaping and painting of school infrastructure.

Teachers report that the program has a significant impact on improving student engagement and attendance. Students build many things but, most importantly, their social skills, self worth and their confidence. Our thanks go to our schools and Hands On Learning Australia for their ongoing support of this great program.

Industry Tours for KOOKAS Club

Wimmera Southern Mallee LLEN established the Koorie Kids After School (KOOKAS) club in 2012 as part of the Horsham Indigenous Parent and Community Engagement (HIPACE) Program. KOOKAS Club is now run by Goolum Goolum Aboriginal Cooperative. Wimmera Southern Mallee LLEN continues to support KOOKAS Club by arranging industry tours to local businesses to help raise aspirations and to expose primary aged children to a range of jobs that are available in our local area. In 2016, students visited:

- The CFA
- Horsham Ambulance
- Wimmera Health Care Group – Horsham Hospital
- Old Peppertree Nursery.



KOOKAS Club visit to Old Peppertree Nursery



KOOKAS Club visit to Horsham CFA

Partnerships

COMMUNITY ACTION NETWORKS

WSMILEN has been coordinating Community Action Networks (CANs) since 2010 when the Horsham, Koorie and Warracknabeal CANs were established. CANs were established in Nhill and Murtoa in 2011, Edenhope in 2014 and Dimboola in 2015.

Community Action Networks bring together representatives from a range of organisations who work together with schools to address local issues to support young people in their local area.

CANs have continued to support a wide range of existing programs and initiatives as well as establish new programs and initiatives.

In 2016 the CANs continued to support MATES Mentoring Programs, MATES Reading Buddies Programs, Let's Read Programs across the four Wimmera Southern Mallee shires, School Friendly Business Programs, Hands On Learning Programs and the Western Victorian Careers Expo. All of these programs have a single goal—to improve outcomes for young people in the region, particularly those at risk of disengaging from education.

Poor literacy skills has been identified as a key factor in addressing school retention rates and successful transition into employment or further education. The Reading Buddies program and the Let's Read program aim to improve literacy skills in the early years, while the MATES Mentoring Program and Hands on Learning Program, are targeted to support students in late primary and secondary school. The School Friendly Business Program acknowledges the vital role that local businesses provide in supporting schools, particularly in providing work-placements for students in their secondary years. The program aims to support businesses who support their local schools and build stronger links between businesses, schools and the wider community.

The partnerships and connections made via the CAN meetings are a key to linking schools with support services and programs to meet the ever increasing challenge of improving outcomes for young people.

As well as continuing to support the many existing programs and initiatives, CAN meetings facilitate networking opportunities for schools and support agencies that lead to new initiatives that would not happen without the network.

Initiatives from the CANs in 2016 included:

Dimboola CAN

- Continuing support for the Dimboola Memorial Secondary College (DMSC) MATES Mentoring Program
- Establishment of the MATES Mentoring Program at Dimboola Primary School
- Support for DMSC VCAL students to set up pop-up libraries in Dimboola
- Assisting DMSC to find employers to participate in mock interviews for students
- Ongoing support for the Let's Read Program
- Connecting community service agencies with Dimboola schools
- Linking Centre for Participation with DMSC to run Introduction to Volunteering sessions for year 10 students.
- Linking Dimboola Primary School with the Delta Group to assist with a maintenance project
- Support to establish pop-up libraries in Dimboola
- Supporting the partnership between Wimmera Health Care Group and Dimboola schools to run health programs.

Edenhope CAN

- Support for the continuation of the MATES Mentoring Program at Edenhope College
- Connections strengthened between Edenhope College and the local business community via a School Friendly Business dinner
- Partnership between Edenhope College and Edenhope and District Hospital to deliver the Drumbeat Program
- Support to establish pop-up libraries in Edenhope
- Support for the Let's Read Program.

Horsham CAN

- Facilitation of industry tours for Horsham College alternate pathways students
- Support for the Horsham Let's Read Program
- Ongoing support for the MATES Mentoring programs and Reading Buddies programs
- Connecting community service agencies with Horsham schools
- Supporting partnerships between Wimmera Health Care Group and local schools to deliver health programs
- Linking Wimmera Health Care Group allied health staff with local schools via the Reading Buddies Program
- Support to establish pop-up libraries in Horsham
- Recommendation to the Department of Education and Training for a review of assessment of kindergarten students prior to starting school.

Partnerships

Koorie CAN

- Support for the Koorie Kids After School (KOOKAS) Club
- Industry tours for KOOKAS Club
- Ongoing support for the MATES Mentoring programs and Reading Buddies programs
- Connecting Koorie service agencies with Horsham Schools
- Organisation of industry tours for Koorie students
- Support for the Deadly Bike Program
- Linking Goolum Goolum staff with Horsham Primary School via the Reading Buddies Program
- Linking the Careers Expo Project Officer with Koorie agencies to increase engagement of Koorie students at the Expo.

Murtoa CAN

- Facilitation of a partnership between Yarriambiack Shire and Murtoa College to:
 - apply for funding for the ongoing delivery of the Hands On Learning program
 - run FREEZA events throughout the year
 - run film workshops involving Murtoa young people
 - involve Murtoa College students in the Yarriambiack Youth Council
 - link Murtoa College students with the Yarriambiack Has Talent event
- Ongoing support for the Murtoa College MATES Mentoring program
- Linking community agencies with Murtoa College
- Support to establish pop-up libraries in Murtoa.

Nhill CAN

- Facilitating a partnership between WSMLEN, Nhill Lutheran School and the Karen community to develop dual language Karen-English children's books for preschool children
- Linking Centre for Participation with Nhill College to run Introduction to Volunteering sessions for students
- Support for VCAL students to establish pop-up libraries in Nhill
- Ongoing support for the Nhill College MATES Mentoring Program
- Support for the Let's Read program
- Support for the establishment of Shake Rattle and Read program at Nhill College
- Linking community agencies with Nhill schools.

Warracknabeal CAN

- Linking the Warracknabeal Hands on Learning program with Yarriambiack Shire to develop a sustainable funding arrangement to ensure the continuation of the Hands On Learning program
- Ongoing support for the Warracknabeal MATES Mentoring Programs and Reading Buddies programs
- Support for the Warracknabeal Oral Reading Development Strategy (WORDS)
- Building connections between Warracknabeal Secondary College and local businesses through the School Friendly Business Program
- Linking community agencies with Warracknabeal schools.



MATES Mentoring Program



MATES Mentoring continues to grow

The MATES Mentoring program continues to provide valuable support for young people in our local schools. Since the inception of the program in 2010, 405 students have been matched with a mentor through the program. Mentors meet with their mentee for one hour a fortnight providing encouragement, guidance, assistance and a positive adult influence.

During 2016, 57 new mentors were matched with students and a further 37 mentors continued on from 2015, making a total of 94 students who were supported by a mentor in 14 schools across the Wimmera Southern Mallee region. The program continues to receive positive feedback from mentors, mentees and parents of mentees.

Parents of participants in the program say:

'Extremely worthwhile and it has been the highlight of her time at school'

'The support that my son's mentor provided at a crucial time in his life was invaluable.'

Mentors in the program say:

'Mentoring has taught me a lot about myself.'

'It gives me a chance to relax during a busy working week.'

'A fantastic experience.'

'The program has been an absolute pleasure. I thoroughly enjoy the company of my student and I sense he enjoys mine.'

Mentees in the program say:

'My mentor is very caring and listens to all my problems and she has made me really enjoy school.'

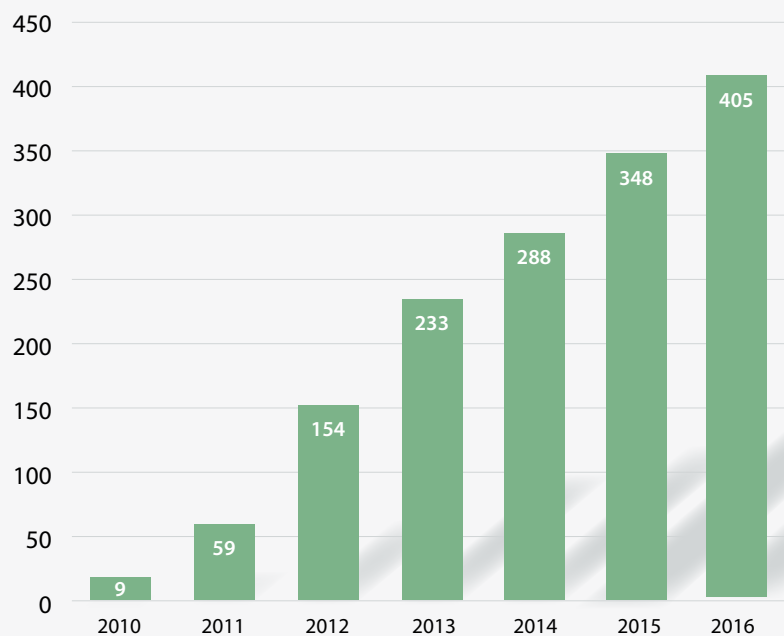
'I love spending time with my mentor.'

'I am more confident in myself.'

'I wish it could have gone for longer.'

MATES Mentoring Program

MATES Mentors



405

The number of young people who have been matched with a mentor since the inception of the MATES Mentoring program in 2010

Cumulative Total By Year

Mentoring Programs in the Wimmera Southern Mallee Region

	2010	2011	2012	2013	2014	2015	2016	Grand Total
Dimboola Memorial Secondary College	9	15	11	8	11	7	9	70
Edenhope College				7		11		18
Goroke P-12			8	5	4		4	21
Hopetoun P-12 College			1		2	2		5
Horsham College		8	12	8	12	5	10	55
Horsham PS 298			16	9	2	3	2	32
Horsham PS Rasmussen			6	7	3	5	1	22
Horsham Satellite VCAL			4					4
Horsham Special School			6					6
Horsham West PS						5	3	8
Kaniva College			11	7	11	8	4	41
Murtoa College		7	9	4	5	3	3	31
Nhill College		10	11	5	4	5	4	39
Ss Michael & John PS					1	1		2
St Mary's Warracknabeal				8		2	3	13
Warracknabeal Satellite VCAL		9						9
Wimmera Uniting Care		1		2				3
Dimboola Primary School							9	9
Warracknabeal Primary				9		1		10
Warracknabeal Secondary College						2	5	7
Grand Total	9	50	95	79	55	60	57	405

MATES Mentoring Program



MATES Mentors - Hindmarsh Shire Council, Community Champion of the Year



Andrew Sostheim receives the Mentor of the Year Award from MATES program coordinator, Joy Forbes



Fran McDonald, Kaniva College MATES Coordinator receives the Mentoring Team of the Year Award from MATES program coordinator, Joy Forbes

MATES Mentoring Program

Awards

The MATES Mentor of the Year Award was instigated in 2015 to acknowledge the contribution that mentors make to the program and the positive impact they have on the young people they mentor. Schools were invited to nominate a mentor who had gone 'above and beyond the call of duty' for the award.

Some schools found it difficult to nominate a candidate for Mentor of the Year because they felt that every mentor deserved an award. In the light of this, an award for the Mentoring Team of the Year was instigated in 2016.

During Youth Mentoring week in October, MATES mentors and their mentees from around the region attended a ten-pin bowling event in Horsham, followed by lunch and presentation of the 2016 MATES Mentoring Awards

Mentor of the Year

Andrew Sostheim was presented with the award for MATES Mentor of the Year. He was able to take his mentee out to participate in a range of activities, undertake projects and help him complete a Scout Badge. He continued to do this even though he had his own young family and also involves himself in local junior football and cricket teams for the benefit of other young people within Horsham.

We also recognised Teena Atkins for the enthusiasm and energy she committed to the MATES Mentoring program. She made a distinct difference to her mentee's life and is a wonderful ambassador for the MATES program.

Mentoring Team of the Year

Fran McDonald accepted the award for MATES Mentoring Team of the Year on behalf of Kaniva College. For a number of years, Fran has assisted the development of the MATES program at Kaniva. She has built a reliable team of 22 mentors who regularly catch up with their students at the school.

Community Champion Award

The award for MATES Community Champion of the Year acknowledges a business or organisation that provides flexible work arrangements so that staff can mentor young people during school hours.

Hindmarsh Shire was the recipient of this inaugural award in 2016. The Hindmarsh Shire supported seven staff to become involved in mentoring during their work time—real recognition of the importance of developing youth in the local area and a deserving winner of the Community Champion Award.

Acknowledgements

Early in 2016, Julie Nooteboom resigned as coordinator of the Dimboola Memorial Secondary College (DMSC) MATES Mentoring Program. DMSC ran the initial pilot mentoring program in 2010 with nine mentors. From that initial pilot program, the MATES Mentoring Program was further developed by WSMMLLEN and established in other schools across the region.

Julie was a part of the program since its inception back in 2010 and was a driver in ensuring the program ran successfully at Dimboola. She worked tirelessly at her own school as well as assisting other schools to implement a very worthwhile program.

The MATES Program Coordinator, Joy Forbes, who has been a part of the WSMMLLEN team since September 2014 resigned from her role at the end of 2016. Joy will continue to provide support for the new MATES program coordinator in 2017. We thank Joy for her expertise and contribution she has made to ensure the ongoing success of the MATES program.

Reflecting on her time as MATES Mentoring Coordinator, Joy said, 'The MATES program continues to be a vital and influential program for students at risk within our regional communities. In a world where many students and families are struggling and becoming marginalised and isolated, the WSMMLLEN recognises the importance of local connections and the MATES program continues to provide the opportunity to establish and develop networks for those who most need support. It has been an honour to work with the WSMMLLEN team and the many volunteers who generously give of themselves to ensure regional youth have the opportunity for genuine caring support.'

Looking Forward

A goal for 2017 will be to support students in alternative education settings at Horsham College's McKenzie Creek campus.

A number of mentors will continue mentoring their primary mentee through to secondary college to support them during this difficult transition.

Literacy Support

Reading Buddies

The Reading Buddies Program was devised to support schools to find volunteers to read with children, one-on-one in their local school.

The importance of this program was acknowledged by Volunteering Western Victoria, when it was the recipient of the 2015 Overall Leading Volunteer Program.

The Reading Buddies Program is just one of the programs WSMMLLEN facilitates to improve literacy and ultimately develop positive futures for our young people.

In 2016, the Reading Buddies Program was supported substantially by volunteers from Goolum Goolum Aboriginal Cooperative and Wimmera Health Care Group. Both of these organisations provided flexible work arrangements to allow their staff to visit schools during working hours.

Goolum Goolum staff supported the Reading Buddies Program at Horsham Primary School, providing valuable literacy support as well as making valuable connections with Koorie students at the school.

Allied health professionals from Wimmera Health Care Group, participated in the Reading Buddies Program as part of their community education requirement. This included staff from Speech Pathology, Occupational Therapy and Social Work departments. Involvement in the Reading Buddies Program enabled allied health professionals to connect with the community while providing valuable support for children who need additional help with developing their reading skills.



Goolum Goolum Reading Buddies



Author, Freya Colbert, shares a cultural exchange day with visiting Karen student from Lightning Reef Primary School at the Nhill book launch.

Karen-English Dual Language Books

Eight students from years five and six from Nhill Lutheran School wrote and illustrated Karen-English dual language children's books for Karen refugee families in Nhill. This was an initiative of the Nhill Community Action Network to provide books for Karen families to read with their pre-school children.

Nhill Lutheran School teaches the Karen language as its Language Other than English, (LOTE) subject. The grade five and six students produced the books as part of their LOTE program.

With assistance from their teachers, Jeffrey Khinshwe and Plaw Ganemykunoo, eight students produced books that were published by WSMMLLEN. The books were officially launched by the Mayor of the Hindmarsh Shire, Cr Debra Nelson at a Cultural Day at the Nhill Lutheran School in May 2016. About 50 people associated with Bendigo's Lightning Reef Primary School travelled from Bendigo to participate in the day.

WSMMLLEN provided copies of the children's books for the Hindmarsh Let's Read program so that Karen families in Nhill will receive copies when they visit the Maternal and Child Health nurse.



Awards

Volunteering Victoria Award Finalist

The Wimmera Southern Mallee LLEN MATES Mentoring Program was one of four finalists in the Impact Award category, which is awarded to a volunteer manager, volunteer delivered program or volunteer involving organisation that has made a positive, measurable and sustainable social, environmental and/or economic impact on the community, individuals or cause supported by the program.

Unfortunately, we were not selected as the winner of the Volunteering Victoria Impact Award. Apparently, there were a lot of nominations in this category, so we were delighted that MATES mentoring program was selected as a finalist. We were amongst three very worthy organisations in our category.

The winner was Foodbank Victoria, which comprises of 451 agencies across Victoria. Foodbank provides food for families in need. They provide food to 134,000 Victorians on a monthly basis. Last year volunteers donated 33,502 hours to Foodbank Victoria. They are doing great work and thoroughly deserve the award.

Congratulations to all our MATES mentors for continuing to make a difference in the lives of so many children.

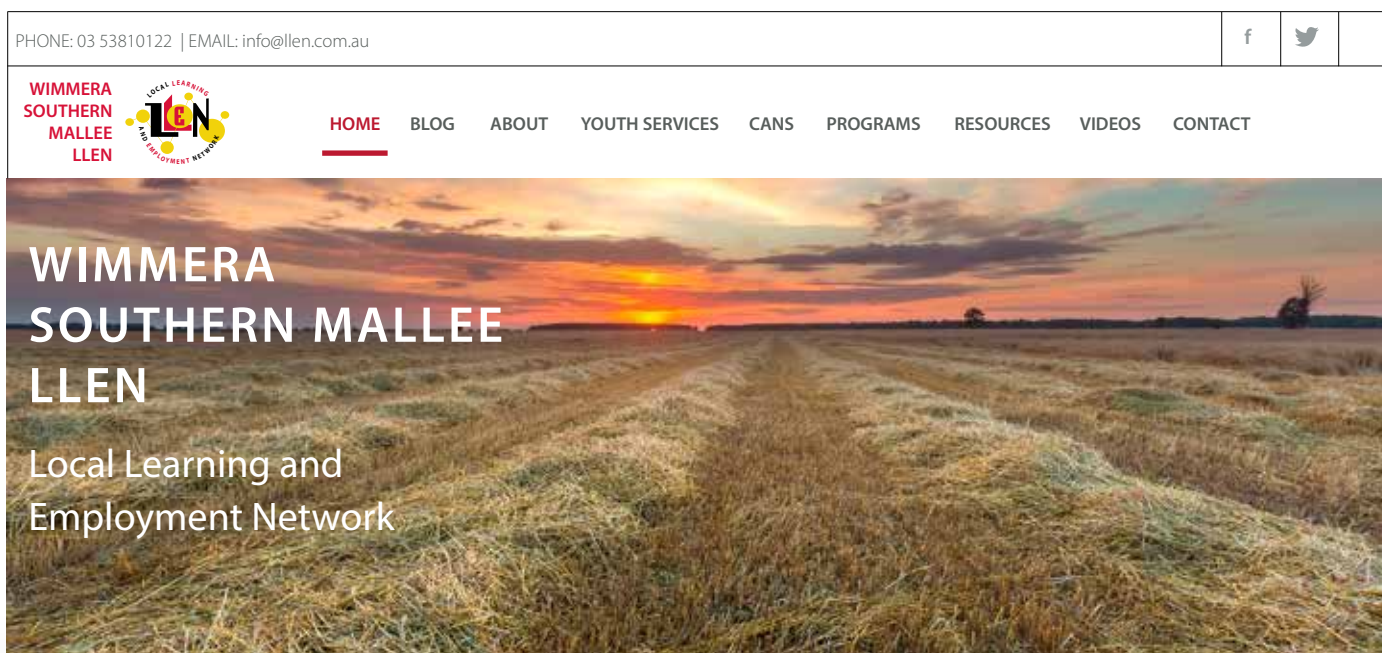


2016 Wimmera Business Awards

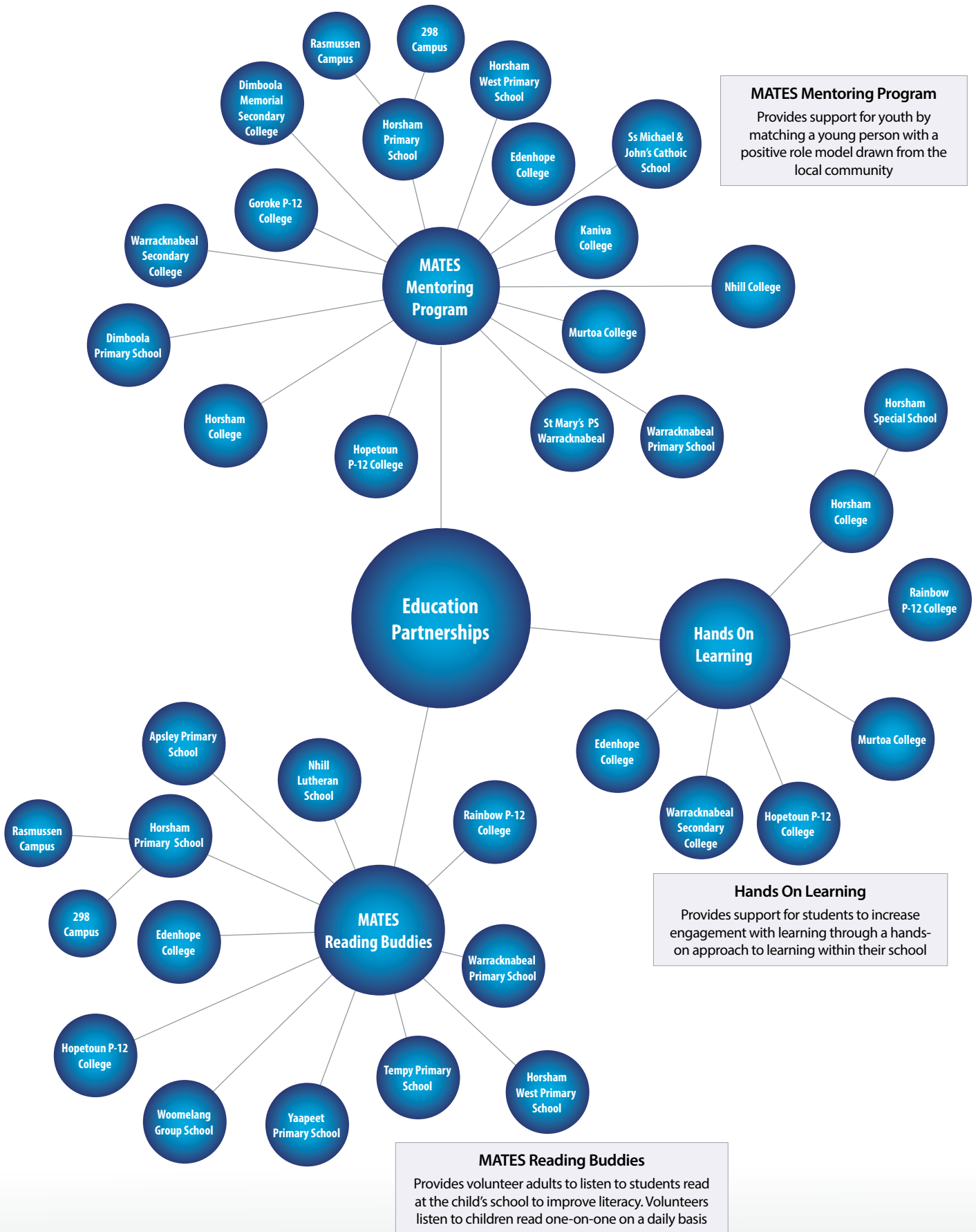
The Wimmera Business Awards are held every two years, profiling Wimmera businesses and recognising the contribution of different types of business to the Wimmera economy. The awards offer an opportunity for regional businesses to promote new innovations and what they are doing well. WSMLLEN was a finalist in the 2016 Wimmera Business Awards.

WSMLLEN Website

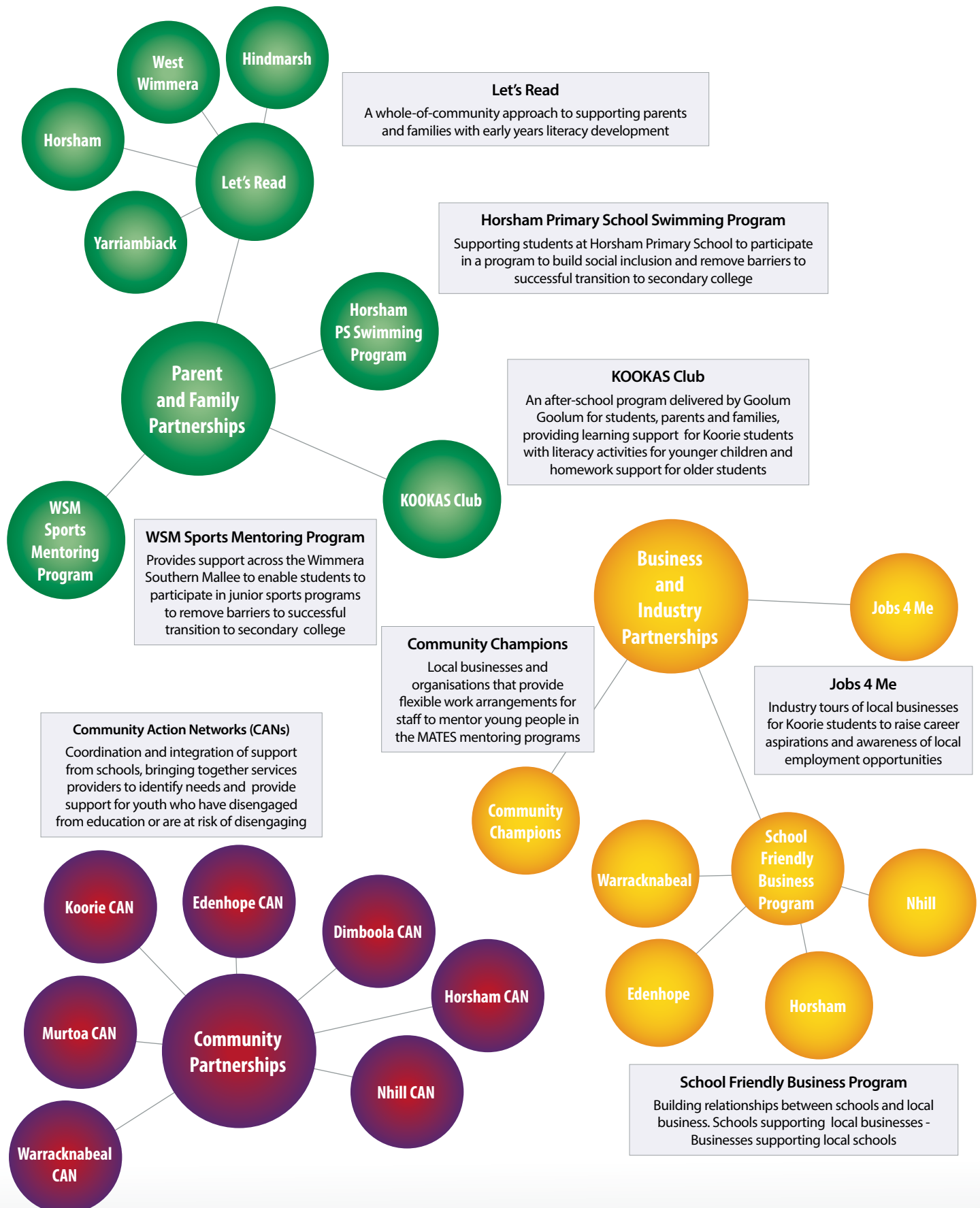
Wimmera Southern Mallee LLEN launched a new website in April 2016. The new site was designed "in-house" using a WordPress template and is mobile-device friendly. The state-wide LLEN Network contracted Bill Coppinger from Whalesong Services to undertake a wide range of data analyses relating to the work of LLENs across the state. Based on the criteria used by Whalesong Services to assess all LLEN websites, the Wimmera Southern Mallee LLEN website was rated as the best LLEN website in the state.



Partnerships brokered by WSMLEN



Partnerships brokered by WSMMLLEN



Program partners

Business and Industry partnerships

Community Champions

Ambulance Victoria (Horsham)
Café Jas
Centre for Participation
CRT, Warracknabeal
GrainCorp Warracknabeal
GWM Water
Hindmarsh Shire Council
Horsham College
Kaniva Bus Service
Morrow Motor Group
Nhill College
Rural Northwest Health
Warracknabeal Secondary College
Wimmera Health Care Group
Wimmera Information Network
Wimmera Primary Care Partnership
Wimmera Southern Mallee LLEN
Wimmera Uniting Care
Yarriambiack Shire Council

School Friendly Business Program Dimboola

Clever Stitch
Wimmera Regional Library Corporation

School Friendly Business Program Edenhope

Edenhope & District Memorial Hospital
Wimmera Regional Library Corporation

School Friendly Business Program Horsham

Across Events Management
Axis Employment
Bendigo Bank Horsham
Besselaar's Pies and Pastries
Business Horsham
Café Jas
Centre for Participation
Cheap as Chips
Chisholm Hi-Fi
D'Coco Hair Studio
D'Lush Studio
Dan's Plaster and Render
Exchange Hotel
Federation University
Fig Tree Café
GWM Water
Gypsy Willow
Hair Art
Hair EmVe
Horsham Agricultural Society
Horsham College
Horsham Concrete Co Pty Ltd
Horsham Lanes and Games
Horsham Lighting and Decor
Horsham Paving Centre
Horsham Primary School 298 Campus
Horsham Primary School Rasmussen Campus

Horsham Regional Art Gallery
Horsham RSL
Horsham Tyre & Battery Service
Horsham West Primary School
Intersport
J & F May Bricklayers
Kirchner Trucks
Luxe Beauty
Mahogany House Trading Co (Natimuk)
McDonalds Horsham
Melissa Powell Photography
Mick Cramer Spray Painter and Smash Repairs
Mitre 10 Horsham
Morrow Motor Group
Network Videos and Music
Nexus Youth Centre
Peaches Fruit Market
Petstock Horsham
Pick a Posie
Red Rock Books & Gallery
Rockin Robin's Food Bar
Sassi Beauty Bar and Hair Design
Schier Cabinet Makers
Sheer Urbane Hair
Shine Hairdressing
Sirs & Hers Hair Studio
Skillinvest
SRT Cabinetry
Ss Michael & St John's Primary School
St Brigid's College
Surf One
Thipatiy Coffee Lounge
The Oven Door Bakery
Think Web Design
Toyworld Horsham/Just Juniors
Up Tempo Café
Wamac Construction
Wimmera Catchment Management Authority
Wimmera Development Association
Wimmera Foot & Ankle Clinic
Wimmera Funerals
Wimmera Information Network
Wimmera Office Equipment
Wimmera Primary Care Partnership
Wimmera Regional Library Corporation
Wimmera super Meat market
Wimmera Uniting Care
Woody's Top Cut Meats
School Friendly Business Program Murtoa
Rupanyup and Minyip Community Bank
Murtoa Neighbourhood House SLAAM
Schier Cabinet Makers

School Friendly Business Program Nhill

Aherns Sherwell
Cambrelle's
Dave's Auto Electrics
Desert Edge Arts
Dunlop Super Dealer Nhill
Earthly Treasures
Halfway Motors
Hindmarsh Shire Council
Jennifer Meek Giftware
Jim's Butchery
Meeky's Tyre Clinic
Nhill Free Press & Kaniva Times
Nhill Paint 'N' Panel
Nhill Pure Indulgence
West Wimmera Health Service
Westprint Heritage Maps
Wimmera Regional Library Corporation

School Friendly Business Program Rainbow

Rainbow Learning Group and Neighbourhood House

School Friendly Business Program Warracknabeal

ANZ Warracknabeal
Belle-Vue Trading Pty Ltd
Brian Clarke Vet Clinic
Café Pharmacino
Creeside Hotel
Dianne Marchment and Associates
Fagan Auto
Feet First Footwear
Jonasson's Kitchen Solutions
North West Real Estate
O'Connors Case IH, Warracknabeal
Presh Beauty
Rural Northwest Health
SP & AJ Cox Automotive
St Mary's Primary School Warracknabeal
Warrack Home Timber and Hardware
Warrack Hot Bread
Warracknabeal Herald and Northwest Press
Warracknabeal Memorial Kindergarten
Warracknabeal Neighbourhood House and Learning Centre
Warracknabeal Pharmacy
Warracknabeal Primary School
Warracknabeal Secondary College
Werrigar Roadhouse
Wilken Grain
Wimmera Regional Library Corporation
Woodbine Inc
Yarriambiack Shire Council

Program partners

Community partnerships

Dimboola CAN

Department of Health and Human Services
Department of Education and Training
Dimboola Banner
Dimboola Memorial Secondary College
Dimboola Primary School
Dimboola Courier
Hindmarsh Shire
St Peter's Lutheran School
Victoria Police
Wimmera Regional Library Corporation
Wimmera Uniting Care
Wimmera Health Care Group

Edenhope CAN

Department of Health and Human Services
Edenhope & District Memorial Hospital
Edenhope College
Victoria Police
West Wimmera Shire
Wimmera Regional Library Corporation
Wimmera Uniting Care

Horsham CAN

Centre for Participation
Community Axis
Community Members
Connect Ed
Department of Education and Training
Department of Health and Human Services
Federation University
Horsham College
Horsham Community House
Horsham Rural City Council
Nexus Youth Centre
Victoria Police
Wimmera Primary Care Partnership
Wimmera Uniting Care

Koorie CAN

Barengi Gadjin Land Council
Centre for Participation
Community Members
Connect Ed
Delkaia Best Start Program
Department of Health and Human Services
Department of Education and Training
Department of Prime Minister and Cabinet
Federation University
Gambler's Help
Goolum Goolum Aboriginal Cooperative
Horsham College
Horsham Primary School 298 Campus
Horsham Primary School Rasmussen Campus
Horsham Rural City Council
Horsham West Primary School
Local Aboriginal Education Consultative Group
Victorian Aboriginal Education Association Incorporated
Victoria Police
Wurega Aboriginal Corporation
Wimmera Uniting Care

Murtoa CAN

Centre for Participation
Community Members
Department of Health and Human Services
Department of Education and Training
Federation University
Local Businesses
Murtoa College
Murtoa Neighbourhood House
Rupanyup and Minyip Community Bank
Victoria Police
West Wimmera Health Service
Wimmera Uniting Care
Yarriambiack Shire Council

Nhill CAN

Centre for Participation
Community Members
Department of Health and Human Services
Department of Education and Training
Federation University
Hindmarsh Shire Council
Nhill College
Nhill Neighbourhood House
Nhill Lutheran School
St Patrick's Primary School
Victoria Police
Wimmera Uniting Care

Warracknabeal CAN

Centre for Participation
Department of Health and Human Services
Department of Education and Training
Federation University
Grampians Community Health
Local Businesses
Warracknabeal Neighbourhood House & Learning Centre
Rural Northwest Health
Warracknabeal Secondary College
Wimmera Primary Care Partnership
Wimmera Uniting Care
Woodbine
Yarriambiack Shire Council



Program partners

Education partnerships

Hands On Learning Edenhope

Hands On Learning Australia

Edenhope College

Hands On Learning Hopetoun College

Hands On Learning Australia

Hopetoun P-12 College

Hands On Learning Horsham College

Hands On Learning Australia

Horsham College

Hands On Learning Murtoa College

Hands On Learning Australia

Murtoa College

Hands On Learning Rainbow

Hands On Learning Australia

Rainbow P-12 College

Hands On Learning Warracknabeal

Hands On Learning Australia

Warracknabeal Secondary College

MATES Mentoring Program DMSC

Community Members

Dimboola Community Action Network

Dimboola Memorial Secondary College

Hindmarsh Shire

Local Businesses

MATES Mentoring Program Dimboola Primary School

Community Members

Dimboola Community Action Network

Dimboola Primary School

Local Businesses

MATES Mentoring Program Edenhope College

Community Members

Edenhope Community Action Network

Edenhope College

Local Businesses

MATES Mentoring Program Goroke

Community Members

Goroke P-12 College

MATES Mentoring Program Hopetoun

Community Members

Hopetoun P-12 College

MATES Mentoring Program Horsham College

Community Members

Horsham Community Action Network

Horsham College

Local Businesses

MATES Mentoring Program HPS 298 Campus

Community Members

Horsham Community Action Network

Horsham Primary School 298 Campus

Local Businesses

MATES Mentoring Program HPS Rasmussen Campus

Community Members

Horsham Community Action Network

Horsham Primary School Rasmussen Campus

Local Businesses

MATES Mentoring Program Kaniva College

Community Members

Kaniva College

MATES Mentoring Program Murtoa College

Community Members

Local Businesses

Murtoa College

Murtoa Community Action Network

Murtoa Neighbourhood House

MATES Mentoring Program Nhill College

Community Members

Hindmarsh Shire

Local Businesses

Nhill College

Nhill Community Action Network

MATES Mentoring St Mary's Warracknabeal

Community Members

Local Businesses

St Mary's Primary School Warracknabeal

Warracknabeal Community Action Network

MATES Mentoring Warracknabeal Primary School

Community Members

Local Businesses

Warracknabeal Community Action Network

Warracknabeal Primary School

MATES Reading Buddies Edenhope College

Community Members

Edenhope Community Action Network

Edenhope College

MATES Reading Buddies Hopetoun P-12 College

Community Members

Hopetoun P-12 College

MATES Reading Buddies Horsham West PS

Community Members

Horsham Community Action Network

Horsham West Primary School

MATES Reading Buddies HPS 298 Campus

Community Members

Horsham Community Action Network

Horsham Primary School 298 Campus

MATES Reading Buddies HPS Rasmussen Campus

Community Members

Horsham Community Action Network

Horsham Primary School Rasmussen Campus

MATES Reading Buddies Kaniva College

Community Members

Kaniva College

MATES Reading Buddies Nhill Lutheran School

Community Members

Nhill Lutheran School

MATES Reading Buddies Apsley Primary School

Apsley Primary School

Community Members

MATES Reading Buddies Rainbow Primary School

Community Members

Rainbow Primary School

MATES Reading Buddies Ss Michael & John's

Community Members

Ss Michael & John's Primary School

MATES Reading Buddies St Mary's Warracknabeal

Community Members

St Mary's Primary School

MATES Reading Buddies Tempy Primary School

Community Members

Tempy Primary School

MATES Reading Buddies Warracknabeal Primary School

Community Members

Warracknabeal Community Action Network

Warracknabeal Primary School

MATES Reading Buddies Woomelang Group School

Community Members

Woomelang Group School

MATES Reading Buddies Yaapect Primary School

Community Members

Yaapect Primary School

Program partners

Parent and family partnerships

Horsham PS Swimming Program

Department of Education and Training
Horsham Primary School 298 Campus
Horsham Primary School Rasmussen Campus
Horsham Rural City Council
Parents and families
Wimmera Regional Sports Assembly
YMCA

KOOKAS Club

Delkaia Best Start Program
Federation University
Goolum Goolum Aboriginal Cooperative
Horsham College
Horsham Primary School 298 Campus
Horsham Primary School Rasmussen Campus
Horsham West Primary School
Local Aboriginal Education Consultative Group
Parents and families
Wimmera Regional Library Corporation

Let's Read Hindmarsh

Department of Education and Training
Dimboola CAN
Dimboola Memorial Secondary College
Dimboola Primary School
Federation University
Foundation for Rural & Regional Renewal
Hindmarsh Shire Council
Horsham Sports and Community Club
Murdoch Children's Research Institute
Nhill CAN
Nhill College
Nhill Lutheran School
Nhill Neighbourhood House
Royal Children's Hospital
St Patrick's Primary School Nhill
The Smith Family
West Wimmera Health Service
Wimmera Regional Library Corporation
Wimmera Uniting Care

Let's Read Horsham

Delkaia Best Start Program
Department of Health and Human Services
Department of Education and Training
Federation University
Goolum Goolum Aboriginal Cooperative
Horsham Apex Club 15
Horsham CAN
Horsham North Kindergarten
Horsham Primary School 298 Campus
Horsham Primary School Rasmussen Campus
Horsham Rural City Council
Horsham Special School
Horsham Sports and Community Club
Horsham West Primary School
Murdoch Children's Research Institute
Noah's Ark Inc
Scope Victoria
Skillinvest
Ss Michael & St John's Primary School
The Smith Family
Wimmera Development Association
Wimmera Health Care Group
Wimmera Regional Library Corporation
Wimmera Uniting Care

Let's Read West Wimmera

Edenhope College
Federation University
Foundation for Rural & Regional Renewal
Goroke P-12 College
Horsham Sports and Community Club
Kaniva College
Kaniva Library
Murdoch Children's Research Institute
The Smith Family
West Wimmera Shire
Wimmera Regional Library Corporation
Wimmera Uniting Care

Let's Read Yarriambiack

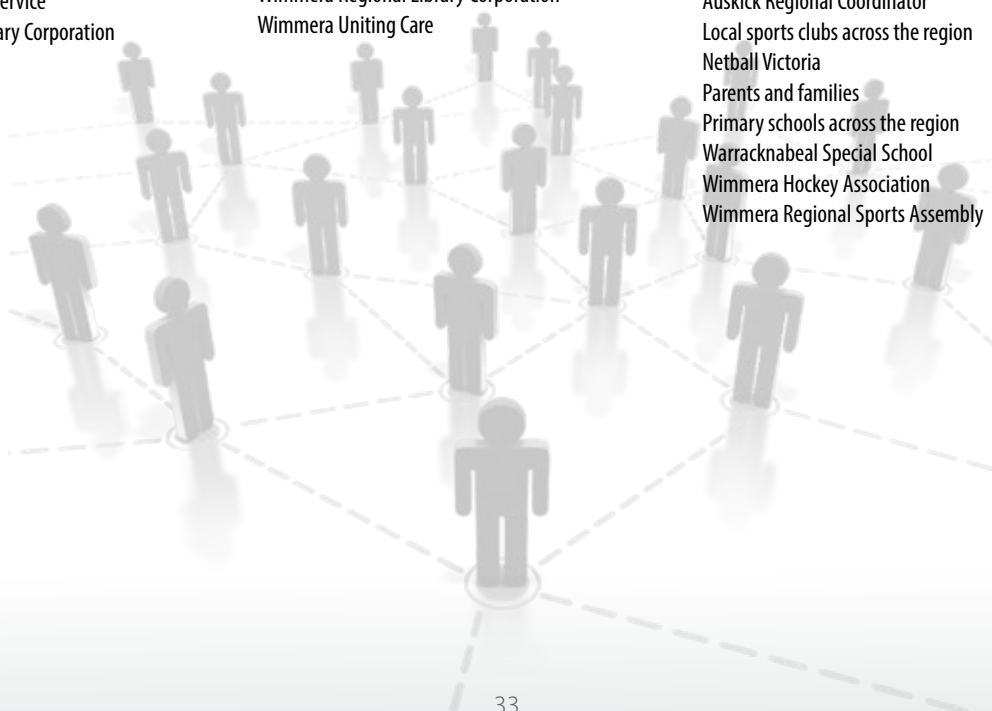
Department of Education and Training
Dunmunkle Health
Federation University
Hopetoun College
Horsham Sports and Community Club
Murdoch Children's Research Institute
Murtoa Community Action Network
Murtoa College
Murtoa Neighbourhood House
Parents and families
Royal Children's Hospital
Rupanyup and Minyip Community Bank
Rural Northwest Health
St Mary's Primary School Warracknabeal
The Smith Family
Warracknabeal Community Action Network
Warracknabeal Neighbourhood House
Warracknabeal Primary School
Warracknabeal Secondary College
Wimmera Regional Library Corporation
Wimmera Uniting Care
Yarriambiack Shire Council

Nhill Community Garden

Cooinda Disability Services
Karen Community Group
Local Businesses
Nhill College
Nhill Community Action Network
Nhill Lutheran School
Nhill Neighbourhood House
Parents and families
West Wimmera Health Service
Wimmera Uniting Care

WSM Sports Mentoring Program

Auskick Community Coordinators
Auskick Regional Coordinator
Local sports clubs across the region
Netball Victoria
Parents and families
Primary schools across the region
Warracknabeal Special School
Wimmera Hockey Association
Wimmera Regional Sports Assembly



WSMLLEN Members

1. Schools (18 Members)

Balmoral Community College	Horsham College	Rainbow P-12 College
Beulah Primary School	Horsham Primary School	Rupanyup Primary School
Dimboola Memorial Secondary College	Horsham Special School	St. Brigid's Secondary College
Edenhope College	Kaniva College	Warracknabeal Secondary College
Goroke P-12 College	Murtoa College	Warracknabeal Special School
Hopetoun P-12 College	Nhill College	Yaapeet Primary School

2. TAFE Institutes or Universities with TAFE Sector (2 Members)

Federation University	Longerenong College
-----------------------	---------------------

3. Adult Community Education Organisations (7 Members)

Gateway BEET	Nhill Neighbourhood House Learning Centre Inc	Warracknabeal Neighbourhood House and Learning Centre
Kaniva LINK Neighbourhood House	Rainbow Community Learning Group & Neighbourhood House	Centre for Participation
Murtoa and District Neighbourhood House SLAAM Inc		

4. Other Education and training organisations including private registered training organisations, universities and group training companies (2 Members)

Community Axis	Skillinvest
----------------	-------------

5. Trade Unions (1 Member)

Victoria Trades Hall Council

6. Employers, Peak employer organisations, regional employer organisations and employment agencies. (23 Members)

Allan and Trev's Workwear	Hopetoun Courier	O'Connors Case IH
Australian Industry Group	Horsham Autoelectrical Services Pty Ltd	Simpson Personnel
Beaurepaires Horsham	Horsham Real Estate	Stanford Enterprises
Business Horsham	Horsham Regional Art Gallery	Toy's Garden Restaurant
Dimboola Pharmacy	Luv-a-Duck	Warracknabeal AMCAL Pharmacy
Edenhope Post Office	J & F May	Warracknabeal Herald - North West Press
Feet First Footwear	McLennan Smash Repairs	Wimmera Mail Times
GWM Water	Morrow Motors	Woodbine Inc

7. Local Government (4 Members)

Hindmarsh Shire Council	West Wimmera Shire Council
Horsham Rural City Council	Yarriambiack Shire Council

WSMLLEN Members

8. Other community agencies and organisations, Commonwealth and State Government departments, School Focused Youth Service, Adult, community and Further Education regional councils, Regional Youth Councils, Area Consultative Committees, parent organisations. (17 Members)

Art Is Festival	Horsham Police	Warracknabeal Memorial Kindergarten Inc.
Department Education and Training	Leadership Wimmera	Wimmera Business Centre
Department of Health and Human Services	NEXUS Youth Centre	Wimmera Development Association
Department of Planning & Community Development	Regional Development Victoria	Wimmera Primary Care Partnership
Grampians Community Health	SalvoConnect Western, Horsham	Wimmera Regional Sports Assembly
	St Laurence	Wimmera Uniting Care

9. Koorie Organisations (3 Members)

Barengi Gadjin Land Council	Goolum Goolum Aboriginal Cooperative	Local Aboriginal Education Consultative Group (LAECG)
-----------------------------	--------------------------------------	---

10. Community Members (41 Members)

John Ackland	Barbara Hahs	Campbell Pallot
Leigh Andressen	Gail Harradine	Gary Pilgrim
Kim Boulton	Gary Jones	Sue Radford
Steve Braybrook	Serena Kereopa	Dianne Richards
Bev Buckley	Neil King	Joe Richardson
Margaret Burdett	Mandy Kirsopp	Murray Robinson
Russell Christie	Ross McFarlane	Graeme Sargent
Joanna Day	William McGrath	Iain Sedgman
Hugh Delahunty	Bruce McInnes	Kylie Smith
Louise Dower-Amor (Resigned Feb 2017)	John Millington	Mandi Stewart
Kim Drummond	Alan Montague	Margaret Stewart
Rob Gersch	Gloria Muldoon	Lyn Sudholz
John Glover*	Carmen Munro	Mark Zimmerman
Susan Griffiths	Robyn Murphy	

Total Membership as at 31 December 2016 = 117

* Wimmera Southern Mallee LLEN acknowledges the passing of John Glover in 2016. John was a long-time member and took a keen interest in the work of the LLEN.

Independent Audit Report

To the members of Wimmera Southern Mallee Local Learning and Employment Network

We have audited the accompanying financial report of Wimmera Southern Mallee Local Learning and Employment Network, which comprises the statement of financial position as at 31 December 2016, and the Statement of Profit and Loss for the year then ended, statement of changes in equity and statement of cash flows for the year then ended, notes comprising a summary of significant accounting policies and other explanatory information and the Statement by Members of the Committee Declaration.

Committee of Management responsibility for the Financial Report

The Committee of Management of Wimmera Southern Mallee Local Learning and Employment Network are responsible for the preparation and fair presentation of the financial report in accordance with Australian Accounting Standards and Associations Incorporation Reform Act (Vic) 2012 and for such internal control as Committee of Management determine is necessary to enable the preparation and fair presentation of a financial report that are free from material misstatement, whether due to fraud or error.

Auditor's responsibility

Our responsibility is to express an opinion on the financial report based on our audit. We conducted our audit in accordance with Australian Auditing Standards. Those standards require that we comply with relevant ethical requirements relating to audit engagements and plan and perform the audit to obtain reasonable assurance about whether the financial report is free from material misstatement.

An audit involves performing procedures to obtain audit evidence about the amounts and disclosures in the financial report. The procedures selected depend on the auditor's judgement, including the assessment of the risks of material misstatement of the financial report whether due to fraud or error. In making those assessment, the auditor considers internal control relevant to the Associations preparation and fair presentation of the financial statements in order to design audit procedures that are appropriate in the circumstances, but not for the purpose of expressing an opinion on the effectiveness of the entity's internal control. An audit also includes evaluating the appropriateness of the accounting policies used and the reasonableness of accounting estimates made by Committee of Management, as well as evaluating the overall presentation of the financial report.

We believe that the audit evidence we have obtained is sufficient and appropriate to provide a basis for our audit opinion.

Independence

In conducting our audit, we have complied with the independence requirements of the Australian professional accounting bodies.



Horsham Office 44 Wilson Street Horsham Victoria 3400

ABN 40 876 591 185

Postal Address PO Box 118 Horsham Victoria 3402

Affiliations: Knights Accounting, 16 Cromie Street Rupanyup Victoria 3388

P 03 5382 3001 **F** 03 5381 1357 **E** mail@wattsprice.com.au **W** www.wattsprice.com.au

Liability limited by a
scheme approved
under Professional
Standards Legislation



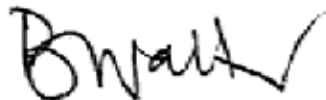
Electronic publication of the audited financial report

It is our understanding that the Wimmera Southern Mallee Local Learning and Employment Network intends to electronically present the audited financial report and auditor's report on its internet website.

Responsibility for the electronic presentation of the financial report on the Wimmera Southern Mallee Local Learning and Employment Network website is that of Committee of Management of the Wimmera Southern Mallee Local Learning and Employment Network. The security and controls over information on the website should be addressed by the Wimmera Southern Mallee Local Learning and Employment Network to maintain the integrity of the data presented. The examination of the controls over the electronic presentation of audited financial report(s) on the Wimmera Southern Mallee Local Learning and Employment Network website is beyond the scope of the audit of the financial report.

Opinion

In our opinion, the financial report of Wimmera Southern Mallee Local Learning and Employment Network presents fairly, in all material respects the Wimmera Southern Mallee Local Learning and Employment Network financial position as at 31 December 2016, and of its financial performance and its cash flows for the year then ended in accordance with Australian Accounting Standards and Associations Incorporation Reform Act (Vic) 2012.



BRIAN WATTS
Certified Practicing Accountant

16 / 2 / 2017

Watts Price Accountants
44 Wilson Street
HORSHAM VIC 3400



Horsham Office 44 Wilson Street Horsham Victoria 3400

ABN 40 876 591 185

Postal Address PO Box 118 Horsham Victoria 3402

Affiliations: Knights Accounting, 16 Cromie Street Rupanyup Victoria 3388

P 03 5382 3001 **F** 03 5381 1357 **E** mail@wattsprice.com.au **W** www.wattsprice.com.au

Liability limited by a
scheme approved
under Professional
Standards Legislation



Statement of Profit and Loss

WIMMERA SOUTHERN MALLEE LOCAL LEARNING AND EMPLOYMENT NETWORK INC.

STATEMENT OF PROFIT AND LOSS

FOR THE YEAR ENDED 31 DECEMBER 2016

	2016	2015
	\$	\$
Revenue	450,283	506,018
Advertising and promotion expense	16,911	13,665
Depreciation and amortisation expense	7,591	9,004
Employee expenses	274,470	253,811
Employee provisions expense	4,911	(2,546)
Motor Vehicle expenses	9,781	9,563
Other expenses	59,849	57,009
Project expenses	54,267	63,812
Rental expense	9,909	9,818
Net current year surplus	<u>12,594</u>	<u>91,882</u>
Other comprehensive income	-	-
Total comprehensive income for the year	<u>12,594</u>	<u>91,882</u>
Net current year surplus attributable to members of the entity	<u>12,594</u>	<u>91,882</u>
Total comprehensive income attributable to members of the entity	<u>12,594</u>	<u>91,882</u>

Statement of Financial Position

WIMMERA SOUTHERN MALLEE LOCAL LEARNING AND EMPLOYMENT NETWORK INC.

STATEMENT OF FINANCIAL POSITION

AS AT 31 DECEMBER 2016

	2016	2015
	\$	\$
ASSETS		
CURRENT ASSETS		
Cash on hand	532,481	354,530
Accounts receivable and other debtors	76,869	43,129
Prepayments	3,554	22,622
TOTAL CURRENT ASSETS	<u>612,904</u>	<u>420,281</u>
NON-CURRENT ASSETS		
Property, Plant and Equipment	<u>24,047</u>	<u>27,686</u>
TOTAL NON-CURRENT ASSETS	<u>24,047</u>	<u>27,686</u>
TOTAL ASSETS	<u>636,951</u>	<u>447,967</u>
LIABILITIES		
CURRENT LIABILITIES		
Accounts payable and other payables	19,812	17,227
Provisions	33,375	19,988
Income received in advance	168,002	-
Current tax liabilities	<u>2,619</u>	<u>1,728</u>
TOTAL CURRENT LIABILITIES	<u>223,808</u>	<u>38,943</u>
NON-CURRENT LIABILITIES		
Provisions	<u>5,634</u>	<u>14,110</u>
TOTAL NON-CURRENT LIABILITIES	<u>5,634</u>	<u>14,110</u>
TOTAL LIABILITIES	<u>229,443</u>	<u>53,053</u>
NET ASSETS	<u>407,508</u>	<u>394,914</u>
EQUITY		
Retained surplus	<u>407,508</u>	<u>394,914</u>
TOTAL EQUITY	<u>407,508</u>	<u>394,914</u>

Statement of Changes in Equity

WIMMERA SOUTHERN MALLEE LOCAL LEARNING AND EMPLOYMENT NETWORK INC.

STATEMENT OF CHANGES IN EQUITY FOR THE YEAR ENDED 31 DECEMBER 2016

	Retained Surplus 2016 \$	Retained Surplus 2015 \$
Balance at 1 January	394,914	303,032
Comprehensive Income		
Net Surplus for the year	12,594	91,882
Total Comprehensive Income attributable to members of the entity	<u>12,594</u>	<u>91,882</u>
Balance at 31 December	<u><u>407,508</u></u>	<u><u>394,914</u></u>

Statement of Cashflows

WIMMERA SOUTHERN MALLEE LOCAL LEARNING AND EMPLOYMENT NETWORK INC.

STATEMENT OF CASHFLOWS

FOR THE YEAR ENDED 31 DECEMBER 2016

	2016	2015
	\$	\$
CASHFLOW FROM OPERATING ACTIVITIES		
Grants (state) operating received	563,770	202,150
Non Government Funded Projects funds received	12,356	17,000
Payments to suppliers and employees	(402,643)	(457,719)
Interest received	8,420	9,988
Net cash provided by operating activities	<u>181,902</u>	<u>(228,581)</u>
CASH FLOWS FROM INVESTING ACTIVITIES		
Proceeds from sale of property, plant and equipment	-	-
Purchase of property, plant and equipment	3,951	1,406
Net cash used in investing activities	<u>(3,951)</u>	<u>(1,406)</u>
CASH FLOWS FROM FINANCING ACTIVITIES		
Net increase/(decrease) in cash held	177,951	(229,987)
Cash on hand at beginning of financial year	354,530	584,517
Cash on hand at end of financial year	<u>532,481</u>	<u>354,530</u>

Statement by Committee of Management

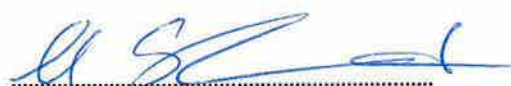
**WIMMERA SOUTHERN MALLEE LOCAL LEARNING AND EMPLOYMENT NETWORK INC.
STATEMENT BY MEMBERS OF THE COMMITTEE
FOR THE YEAR ENDED 31 DECEMBER 2016**

In accordance with a resolution of the committee of Wimmera Southern Mallee Local Learning and Employment Network Inc., the members of the committee declare that the financial statements as set out:

- present a true and fair view of the financial position of Wimmera Southern Mallee Local Learning and Employment Network Inc. As at 31 December 2016 and its performance for the year ended on that date in accordance with Australian Accounting Standards (including Australian Accounting Interpretations) of the Australian Accounting Standards Board and requirements of the Associations Incorporation Reform Act (Vic) 2012; and
- at the date of this statement, there are reasonable grounds to believe that Wimmera Southern Mallee Local Learning and Employment Network Inc. will be able to pay its debts as and when they fall due.

The statement is signed for and on behalf of the committee by:

Chair:



Mandi Stewart
Chair's Name

Treasurer:



Carmen Munro
Treasurer's Name

Dated this 15th Day of February 2017

