

Creating partnerships between industry, education and the community that develop positive futures for young people



In this Issue:

MATES – celebrating the contribution of volunteers
Structured Workplace Learning at the LLEN
Industry Tours – exploring career options
Community Action Networks – meeting dates
VET Induction Day – 26 October
Headspace Centre for the Wimmera.
VCAA Annual Statewide Briefing
Deadly Bikes
New Course at Fed Uni – Diploma of Nursing
Youth Mental Health First Aid Courses

Cream of the Crop – VCE students' work on display
Yarriambiack Shire Youth Grants
Wimmera Business Awards
CAS Hawker Scholarship
iGen Foundation's Young Entrepreneurs
Great Start Community Fund
WSMLLEN Staff Contact details
Early Parenting Centre
Career Resources

MATES – celebrating the contribution of volunteers



2016 MATES Mentoring Awards

The MATES Mentoring Program will celebrate the wonderful contribution made by mentors and Community Champions at an event to be held at Horsham Lanes and Games on 25 October 2016.

Awards will be presented for:

- Mentor of the Year
- Mentor School team of the Year
- Mentor Community Champion Business of the Year.

The MATES Mentoring Program is seeking mentors across the Wimmera southern Mallee region. **You can help change a life in 24 hours.** Find out more or apply online at <http://www.llen.com.au/mates-mentoring/>

Structured Workplace Learning at the LLEN

By Jaimee Evans

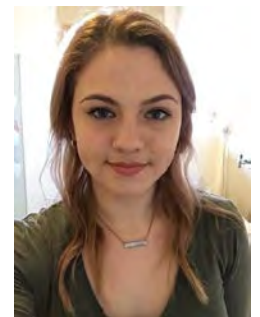
My name is Jaimee and I am a Satellite VCAL student, finishing at the end of 2016. In October I started work placement at the Wimmera Southern Mallee LLEN. On my first day I was quite nervous but I was made very welcome by everyone and I settled in quickly.

As well as work placement at the LLEN, I work in retail as a casual employee. I started working when I was 15 years old, so although I am not new to working, I am new to this area of work. After setting up an email address and getting familiar with the computer, I started with some data entry. I have spent a few hours entering the VET enrolment forms into an Excel spreadsheet using the Office 365 online editing option. Doing data entry has allowed me to keep my computer skills up to date and learn about new tools available.

On my second day at the LLEN, I attended a Primary Care Partnership (PCP) meeting with Mary and Melissa. The meeting was a new experience to me as I had never attended a formal meeting before. It was great to get out of the office and network with other community organisations.

I have had the opportunity to meet new and interesting people, and learn a lot about what is going on in and around Horsham, as well as getting motivated to strive for my best and jump at new and exciting opportunities.

Although I have not been with the LLEN for very long, I have enjoyed my time with everyone and am very thankful that they have allowed me to step into their workplace and catch a small glimpse of all the hard work that they do.



Wimmera Southern Mallee LLEN coordinates the Structured Workplace Learning (SWL) Program across the region.

We are currently seeking business who are able to offer SWL placements to students in 2017.

Contact Mary (mary.bysouth@llen.com.au) P 53810122 if you would like to know more or have a place for a student.

Industry tours – exploring career options

The LLEN has been arranging Industry Tours for Horsham College Connect Ed students. These tours have been designed to give an insight into different industries and pathways within a workplace. While visiting local businesses, representatives from the business give their time to talk to the students about roles and responsibilities, tasks and duties and prerequisites that a job seeker may need to gain employment.

WSMILEN would like to thank Sirs and Hers Hair Studio, McDonalds Horsham and Millers Contractors for taking the time in recent weeks to share their knowledge and experiences in their workplace. We value these businesses for their time and commitment to young people in our community.

Community Action Network Meetings (CANs)

CANs bring together representatives from schools, businesses, organisations and the community to support young people in the local community. It is sometimes necessary to change the date of CAN meetings. Up-to-date meeting times and dates and more information can be found on the LLEN website <http://www.llen.com.au/cans/>

Community Action Network meeting dates for Term 4 have been set as follows:

Nhill CAN	11.30 am	Wednesday 12 October 2016	Nhill College
Dimboola CAN	11.30 am	Thursday 20 October 2016	DMSC Fitness Centre, School St, Dimboola
Edenhope CAN	11.00 am	Monday 24 October	Edenhope College and Video link to DET Office in Horsham
Murtoa CAN	11.00 am	Friday 28 October 2016	Murtoa College, Webb St, Murtoa
Horsham CAN	11.30 am	Tuesday 8 November 2016	Room C83, Federation Uni, 289 Baillie St, Horsham
Warracknabeal CAN	11.00am	Friday 11 November 2016	Warracknabeal Secondary College
Koorie CAN	11.00 am	Wednesday 23 Nov 2016	Room A5, Federation Uni, 289 Baillie St, Horsham

VET in Schools Induction Day 26th October

Approximately 170 students from 16 schools across the Wimmera Southern Mallee, Northern and Southern Grampians and Buloke shires will attend Induction Day at five Registered Training Organisations on 26 October. The 13 courses on offer range from the popular Certificate II Building & Construction, Hospitality and Salon Assistant (Hair and Beauty). Students attending will be given information about the course requirements, sit a literacy and numeracy test, and complete some hands-on activities.

We wish these students well for their exciting new career pathway in 2017. *(Pictured below, VET students in action)*



Headspace Centre for the Wimmera

The Wimmera will receive one of 15 new headspace centres across Australia.

See more in the article in the Wimmera Mail Times, 10 October.

<http://www.mailtimes.com.au/story/2614589/horsham-headspace-centre-to-help-wimmera-youth/>



Victorian Curriculum and Assessment Authority (VCAA) Annual Statewide Briefing

The Victorian Curriculum and Assessment Authority (VCAA) and the Department of Education and Training (DET), along with the Victorian Registrations and Qualifications and Authority (VRQA) are conducting VET statewide workshops to deliver updates for schools and providers regarding VET delivered to secondary students. These workshops will take place across Victoria during November. The workshop schedule includes details of locations and dates. (See the link below)

Schools, providers and other interested stakeholders are invited to send appropriate personnel to these events. It is recommended that VET coordinators attend to ensure that the school or provider has access to all program information for 2017. Other staff including careers, transition and pathways coordinators as well as senior school management may wish to attend.

Further Information about workshop locations and session times is available from [VET Statewide Workshops 2016 \(docx - 68.85kb\)](#).



Deadly Bikes – Right on Track

Check out this great video clip from ABC TV about Horsham's Deadly Bike program.

<http://www.abc.net.au/news/2016-08-26/deadlybikes/7788330>

New Course at Federation University Horsham Campus - Diploma of Nursing

Diploma of Nursing is again being offered for students interested in starting off their nursing career close to home. This is a two-year part time course. The course offers a hands-on learning experience in the University labs as well as clinical experience through placements in residential aged care, acute, mental health and community settings.

More Information at: <https://study.federation.edu.au/#/course/144313>

Youth Mental Health First Aid courses

Wimmera Primary Care Partnership will be facilitating more Youth Mental Health First Aid (YMHFA) courses in Horsham and the surrounding areas as needed. Youth Mental Health First Aid is designed specifically for adults helping young people. It focuses on understanding the differences between mental health symptoms and what could be normal teenage behaviour (moodiness, tiredness etc.).

The Youth MHFA two-day course teaches skills for understanding and early intervention.

If you have a group that would like to complete the Youth Mental Health First Aid course, please register your interest with Felicity Johns at Wimmera PCP on 03 5362 1226 or email

felicity.j@grampianscommunityhealth.org.au



Wimmera Southern Mallee LLEN is a recognised Gold Skilled Workplace with 100% of our current staff having completed the Youth Mental Health first aid training. We highly recommend YMHFA training for everyone who works with young people.

To find out more about being a skilled MHFA workplace, or to apply for recognition for your organisation, go the Mental Health First Aid website. <https://mhfa.com.au/cms/mental-health-first-aid-skilled-workplace-initiative>

Cream of the Crop – VCE students' work on display

The Cream of the Crop Exhibition of art and design work from VCE students across the Wimmera is on display at the Wimmera Trade Training Centre. About 100 pieces from Nhill, Horsham, Warracknabeal, St Brigid's, Kaniva, Marian and Murtoa Colleges and Birchip P-12 School are on display. The exhibition can be viewed on weekdays from 9.00 am - 4.00 pm until October 28.

Yarriambiack Shire Youth Grants

Yarriambiack Shire Council is offering grants of up to \$1000 within any single Council financial year for the development of youth activities within the municipality. These may include cultural/arts, recreational, environmental and health/welfare.

The Youth Grants Program is designed to support not-for-profit community organizations or individuals by a financial contribution to a range of programs/projects, which will focus on participation, risk prevention and community building measures for young people within the municipality. Priority will be given to funding proposals targeting youth aged 12 up to 25 years. See more information at:

<http://yarriambiack.vic.gov.au/community-services/youth-services/youth-grants/>



2016 Wimmera Business Awards

Congratulations to Goolum Goolum Aboriginal Cooperative for taking out the award for the best not-for-profit organisation at the 2016 Wimmera Business Awards! Well done to the Wimmera Development Association and event sponsors for delivering such an excellent event. See more at <https://wda.org.au/business-awards>

C.A.S. Hawker Scholarship

The 2017 C.A.S. Hawker Scholarship opens on **Monday 5 December 2016** and will close on **Friday 6 January 2017**.

The C.A.S. Hawker Scholarship is one of the most generous privately funded scholarships available to undergraduate and post-graduate students in Australia. Each residential scholarship is valued at up to \$50,000 over 3 years and is open to students selecting courses at the following institutions:

- Australian National University - ACT
- Flinders University of South Australia - SA
- University of Adelaide (incl. Roseworthy Campus) - SA
- Roseworthy Residential College
- University of New England - NSW
- University of South Australia - SA
- Marcus Oldham College - VIC
- University of Cambridge – UK

See more at www.hawkersscholarship.org

iGen Foundations' Young Entrepreneurs Mentoring Scheme

iGen Foundations' Young Entrepreneurs Mentoring Scheme receives funding from the Victorian Government's LaunchVic Program to pilot iGenFoundation's Young Entrepreneurs Mentoring Scheme. This funding will allow iGen to experiment and collaborate with others regarding approaches to building a sustainable mentoring program specifically dedicated to young entrepreneurs and will provide further support to young entrepreneurs to develop and grow their businesses.

If you are interested in mentoring a young entrepreneur, please register here. <http://www.igenmentor.com/>

If you're 15-30 years old and looking for a business mentor to help you grow your business, please call Lynda on 0414 440 483 or Frank on 0414 39 2323.

Great Start Community Fund

Do you know a group of families that would benefit from coming together as a community playgroup? Do they just need a helping hand and a little know how to get started?

The Great Start Community Playgroup Fund could be the answer. Playgroup Great Start Packs up to the value of \$1,000 will help new playgroups gather the resources and mentoring needed to get a Great Start with their community playgroup.

See more at <http://www.playgroup.org.au/greatstart.aspx>

WSMLLEN Staff – who's who

Meet our WSMLLEN staff.



Tim Shaw
Executive Officer
Let's Read Program
eo@llen.com.au



Melissa Powell
Project Officer
Structured Workplace
Learning
WSM VET Custer
Coordinator
projects@llen.com.au



Lorraine Merton
Administration Officer
Reading Buddies
Program
Community Action
Networks
info@llen.com.au




Mary Bysouth
Project Officer
Structured Workplace
Learning
School Friendly Business
Program
mary.bysouth@llen.com.au



Joy Forbes
Project Officer –
(Part time, Tues & Wed)
MATES Mentoring Program
Sports Mentoring Program
pb@llen.com.au

Early Parenting Centre

The Early Parenting Centre is great for young families. Wimmera Uniting Care provide a range of important supports and programs. Contact the Wimmera Uniting Care for more information or to make referrals. The Early Parenting Centre is located at 8 Darlot Street, Horsham. **To find out more call Wendy or Michelle on 5362 4000**



EARLY PARENTING CENTRE!

TUNING IN TO KIDS

Tuning In to Kids is an early intervention parenting program designed to assist parents/carers to understand their own emotions, enabling them to guide their children towards emotional regulation. It teaches parents/carers:

- Awareness and regulation of their own emotions
- Awareness of their children's emotions
- To use children's emotional experiences as an opportunity for closeness and teaching
- Skills in assisting children to verbally label and manage their emotions
- Skills in assisting children in problem solving to guide children's behaviour with appropriate limits.

Tuning In to Kids is a six session parenting program. The ideas and techniques taught in the program are useful for parents of children of all ages, but are particularly relevant for parents of pre-schoolers.

THE CIRCLE OF SECURITY PARENTING PROGRAM

The Circle of Security Parenting Program is an eight week relationship based early intervention program designed to enhance attachment security between parents and children. This program focuses on how parent/child relationships can be strengthened, this unique approach teaches parents, and those helping them, new ways to understand children's needs and behaviour. It also offers effective ways to respond to these needs and behaviours.

Circle of Security Parenting Program has created a readily accessible and engaging approach to help parents to connect

with their infants and toddlers in ways that break the old, destructive patterns of parenting that so often have been learned by difficult childhood experiences in the past.

The program encompasses:

- Teaching the basics of attachment theory to caregivers
- Increasing parent skills in observing parent/child interactions
- Increasing capacity of the caregiver to recognise and sensitively respond to children's needs.

PARENTING PROGRAM

Families will participate in activities that are fun for both the parents and their children, to assist them to improve their parenting skills and promote positive parent-child relationships.

Our program is flexible to suit the needs of all families. A range of sessions will be offered and some of these may include:

- Playtime (how to play with your child)
- Cooking/Nutrition (healthy options for children)
- Infant First Aid
- Sleep and settling routines
- Daily Child Friendly Routines
- Looking after Yourself for Parents
- Childhood development
- Healthy/Safe Relationships
- Keeping kids safe.

*Referrals can be made through ChildFIRST Intake at Wimmera UnitingCare.



The Wimmera Southern Mallee LLEN Newsletter is sent electronically to over 300 people across the region.

Career Resources

The following information may be of interest to careers teachers and students exploring career pathways:

Myfuture

Students will be able to explore courses, occupations, take a mini career quiz and an entrepreneurship quiz and develop job-seeking skills. <http://myfuture.edu.au>

The Good Careers Guide

You can search over 400 different occupations narrowed down by the field or type of work you would like to do in the future (eg. Helping/advising) <http://bit.ly/2a7Qr0Z>

Good Universities Guide

You will be able to find courses, compare university ratings, search for scholarships and explore careers. <http://bit.ly/1N6a3Pk>

Australian Apprenticeship Pathways

You will be able to undertake apprenticeship aptitude tests, find local apprenticeship and group training centres, and learn about different trade occupations. www.aapathways.com.au in Victoria look up www.masexperience.com.au

Defence Jobs

You can explore occupations, courses and technical trades in the Army, Navy and Air Force. www.defencejobs.gov.au

Careers with Code

Careers in computer science and gaming. <http://bit.ly/1UgX7Vf>

I Choose Technology

Careers in information and communication technologies. <http://bit.ly/2adStKy>

Maths Adds

View career profiles of people working in interesting maths careers, and also find out about how maths is used in careers such as hairdressing, building and nursing. <http://bit.ly/2anSARy>

Maths

Make your career count: explore careers in mathematics such as electrician and meteorologist. <http://bit.ly/1WWajoe>

Bullseye Posters

You can explore occupations related to your favourite school subjects. <http://bit.ly/1svwa98>

Free Careers Test

You can explore occupations based on your personality type. <http://bit.ly/2aGkVD4>

Career Harvest

Careers in Agriculture, Food and Fibre. <http://bit.ly/1f0m8jW>

Rural Careers Australia

You can explore careers in agriculture, horticulture, animal care and land management. www.ruralcareers.net.au

My skills

You can search for and explore vocational courses across Australia learn about in demand jobs and watch videos of young people you have completed vocational training. <http://bit.ly/1D8uek7>

SkillsOne

You can watch videos about different trades. www.skillsone.com.au

QILT

You can compare independent student ratings about different universities and courses. www.qilt.edu.au

Australian Dental Association

Careers in dentistry and dentistry specialisations. <http://bit.ly/2af2xjn>

Exercise and Sports Science Australia

Careers in exercise and sports science. <http://bit.ly/2abl8RG>

Optometry Australia

Careers and courses in optometry. <http://bit.ly/2aCiLpk>

A life without limits

Careers in surveying. <http://bit.ly/1l8GVkL>

Student Edge

Videos and profiles of people working in various occupations. <http://bit.ly/2aCpXSy>

Chartered Accountants

Careers in chartered accountancy. <http://bit.ly/2almab>

Careers in Horse Racing

<http://bit.ly/1Pfx4xW>

Rail Careers

<http://railcareers.net.au>